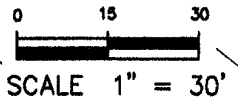


"EXHIBIT A"
**VACATION OF A PORTION OF THE 8' UTILITY &
 MINOR DRAINAGE EASEMENTS OF
 LOT 1 OF LOT A
 OF DERBY SUBDIVISION**

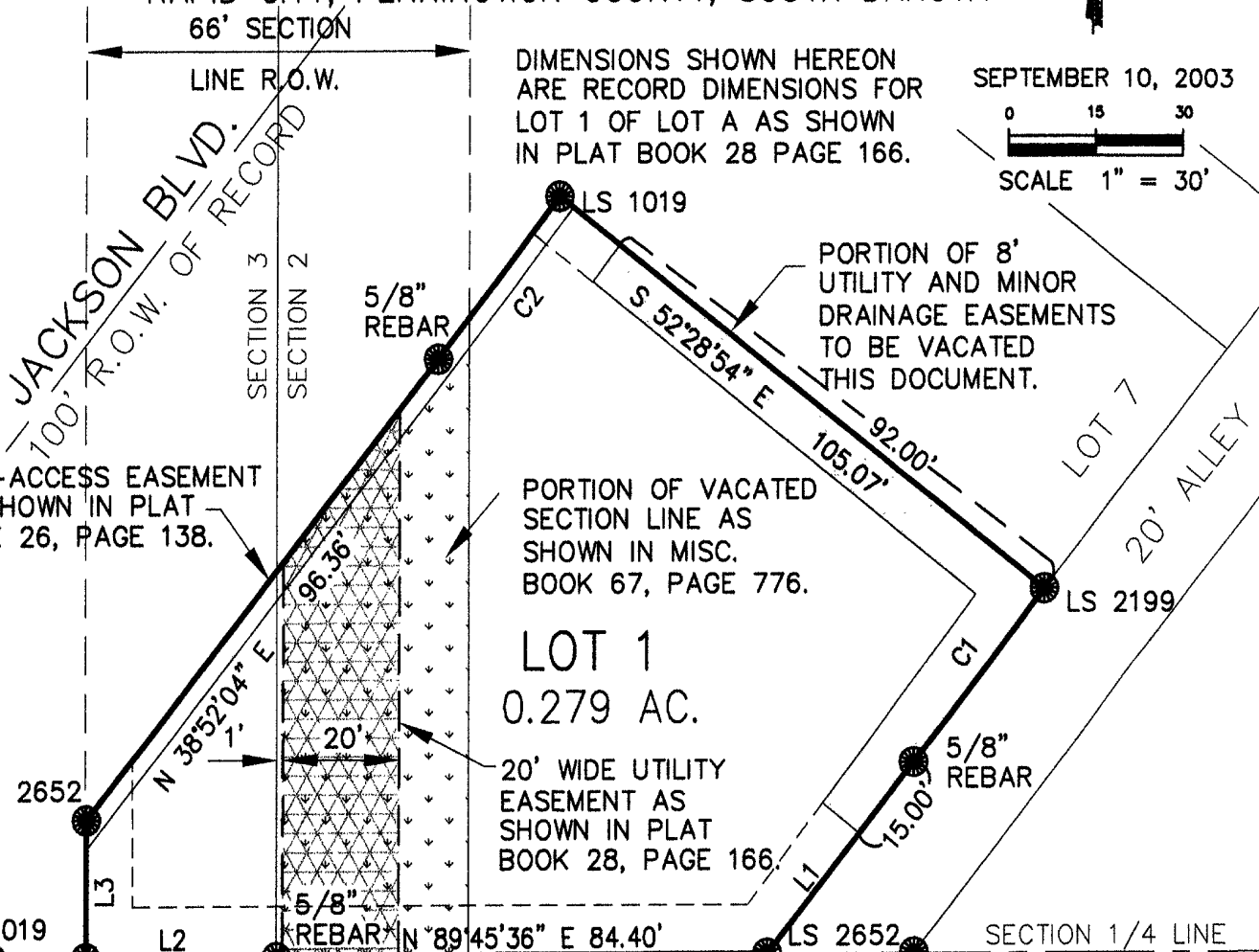
LOCATED IN THE NW1/4 OF THE SW1/4 OF SECTION 2,
 AND IN THE NE1/4 OF THE SE1/4 OF SECTION 3,
 ALL IN T1N, R7E, BHM,
 RAPID CITY, PENNINGTON COUNTY, SOUTH DAKOTA



SEPTEMBER 10, 2003



DIMENSIONS SHOWN HEREON
 ARE RECORD DIMENSIONS FOR
 LOT 1 OF LOT A AS SHOWN
 IN PLAT BOOK 28 PAGE 166.



NON-ACCESS EASEMENT
 AS SHOWN IN PLAT
 BOOK 26, PAGE 138.

PORTION OF VACATED
 SECTION LINE AS
 SHOWN IN MISC.
 BOOK 67, PAGE 776.

PORTION OF 8'
 UTILITY AND MINOR
 DRAINAGE EASEMENTS
 TO BE VACATED
 THIS DOCUMENT.

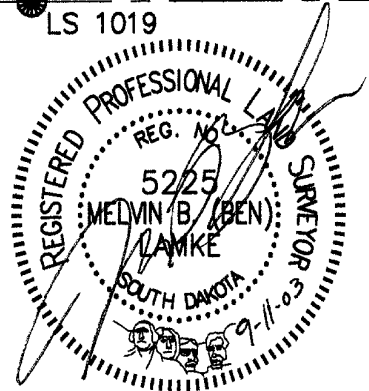
LOT 1
 0.279 AC.

20' WIDE UTILITY
 EASEMENT AS
 SHOWN IN PLAT
 BOOK 28, PAGE 166.

ACCESS EASEMENT FOR
 LOTS 1 & 2 OF LOT A
 OF DERBY SUBDIVISION
 AS SHOWN IN PLAT
 BOOK 28, PAGE 166.

LINE	BEARING	DISTANCE
L1	S 38°52'04" W	39.99
L2	N 89°56'06" W	32.84
L3	N 00°08'46" E	22.36

CURVE	ARC	DELTA	RADIUS
C1	36.21	01°26'41"	1435.88
C2	33.73	01°27'08"	1330.81



Renner & Sperlich Engineering Co.

616 Sixth Street, Rapid City, SD 57701

605/342-1191

C:\Adam\DRAWINGS\1200.00\03_FLAT.DWG 09/11/03 08:57:17 AM MST