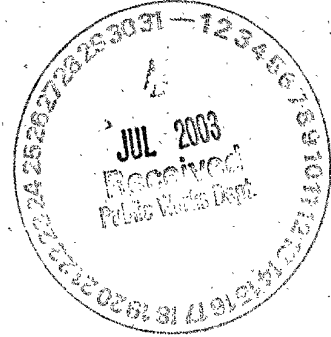




July 30, 2003

Mr. Ted Vore, P.E., L.S.  
Public Works Director  
City of Rapid City  
300 Sixth Street  
Rapid City, SD 57701



Dear Mr. Vore:

Thank you for taking time to meet with members of the Longview Sanitary District Board and Midwest Assistance Program staff. The District would like to purchase water from the City of Rapid City. The purpose of this letter is to formally clarify matters relating to the development of the Longview Sanitary district. The following outlines many of the matters of consideration:

1. The Longview Sanitary District water system will be designed and constructed according to Rapid City standard specifications.
2. The Longview Sanitary District will implement water conservation measures.
3. Pressure reducing valves will be employed as necessary in the system.
4. The boundaries of the Longview Sanitary District currently include 90 parcels of property, as shown on a map included with this letter. The boundaries of the district include the shaded area from the Mesa View development south to Highway 44. Persons from four parcels of property in this area, who did not previously express any objection to the formation of the district, have very recently submitted a petition to be excluded from the district. They are currently being served by the City of Rapid City and the Longview Sanitary District Board is working to address their concerns.
5. Possible future expansion of the district has been discussed. Development is occurring around the boundaries of the Longview Sanitary District. At this time, no action is underway to expand the current boundaries of the district. However, the Board is giving consideration to issues relating to expansion in design and construction of the system.

We look forward to making continued progress with you on this project. As discussed in our meeting, Midwest Assistance Program staff and the Longview Sanitary District Board plan to attend the Public Works Committee meeting on August 12. Could you please place us on the agenda for that meeting? Thank very much for your time and assistance.

Sincerely,

  
Amy Schochenmaier  
Rural Development Specialist

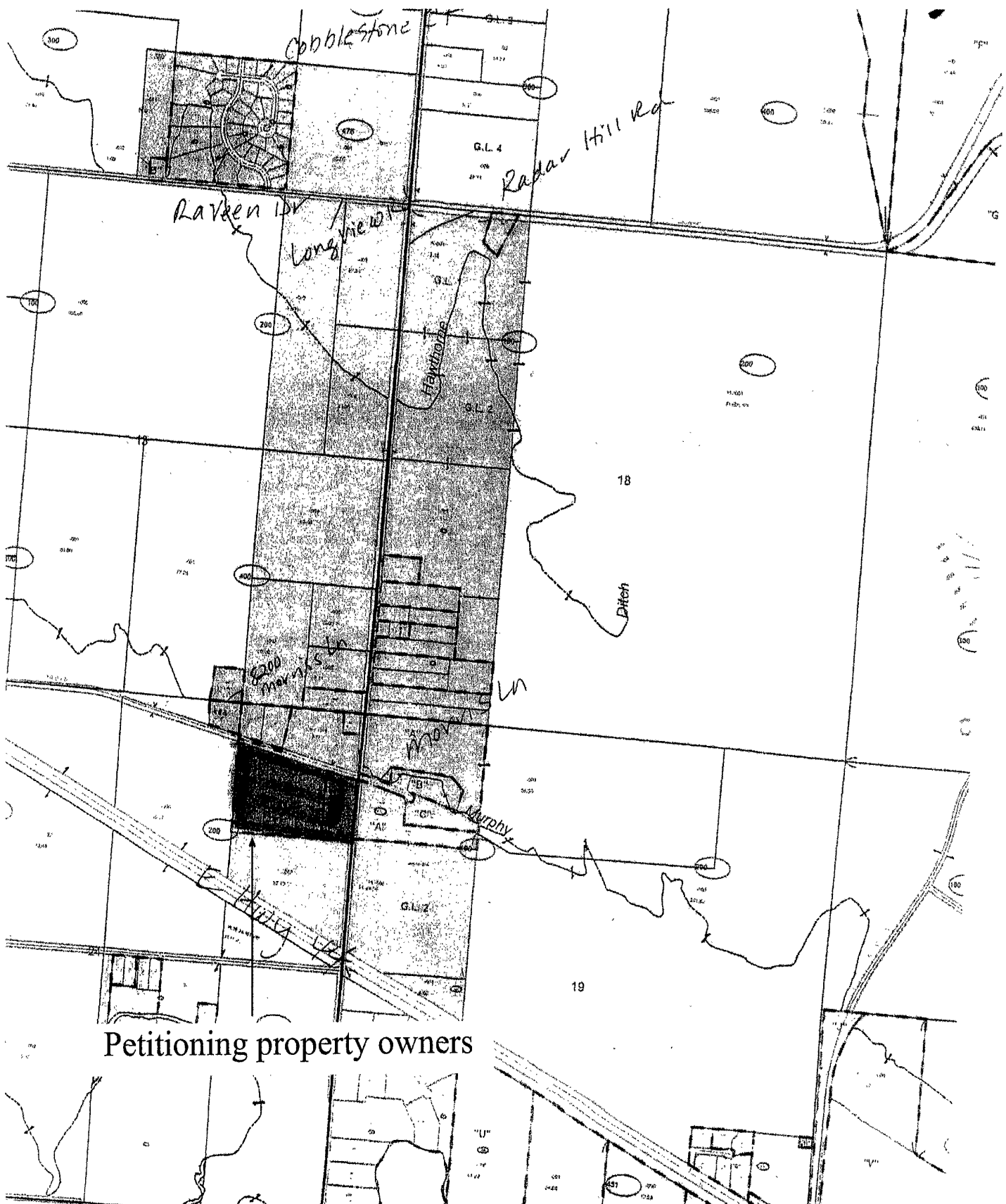
Field Office  
PO Box 279  
Pierre, SD 57501  
Phone: 605.224.4287  
Fax: 605.224.4288  
amysmap@pie.midco.net

Central Office  
PO Box 81  
New Prague, MN 56071  
Tel: 952.758.4334  
Fax: 952.758.4336  
map@bevcomm.net  
www.map-inc.org



No. PW081203-14

# Longview Sanitary District



Petitioning property owners