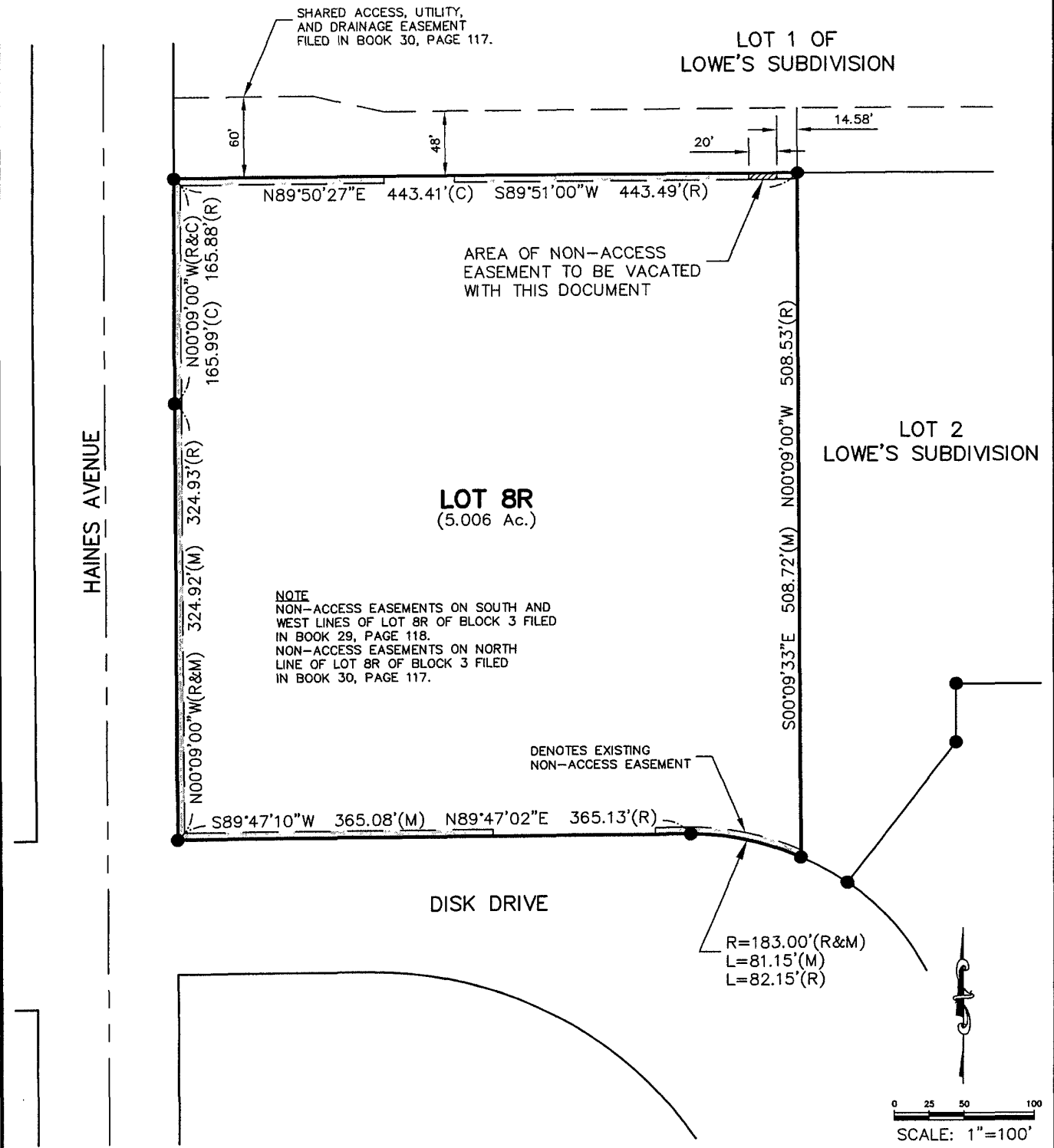


"EXHIBIT A"



LOT 8R OF BLOCK 3
VACATION OF A PORTION OF NON-ACCESS EASEMENT
RAPID CITY, SOUTH DAKOTA

MARCH 2003

Surveyed By: MM/TF
 Date: NOVEMBER 2002
 Drawn By: KJS
 Checked By: DW
 Location: NE1/4 OF SECTION 25
T2N, R7E, BHM



F M G, Inc.

3700 Sturgis Road
 Rapid City, SD 57702-0317
 (605) 342-4105 FAX (605) 342-4222