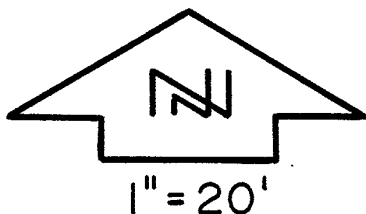
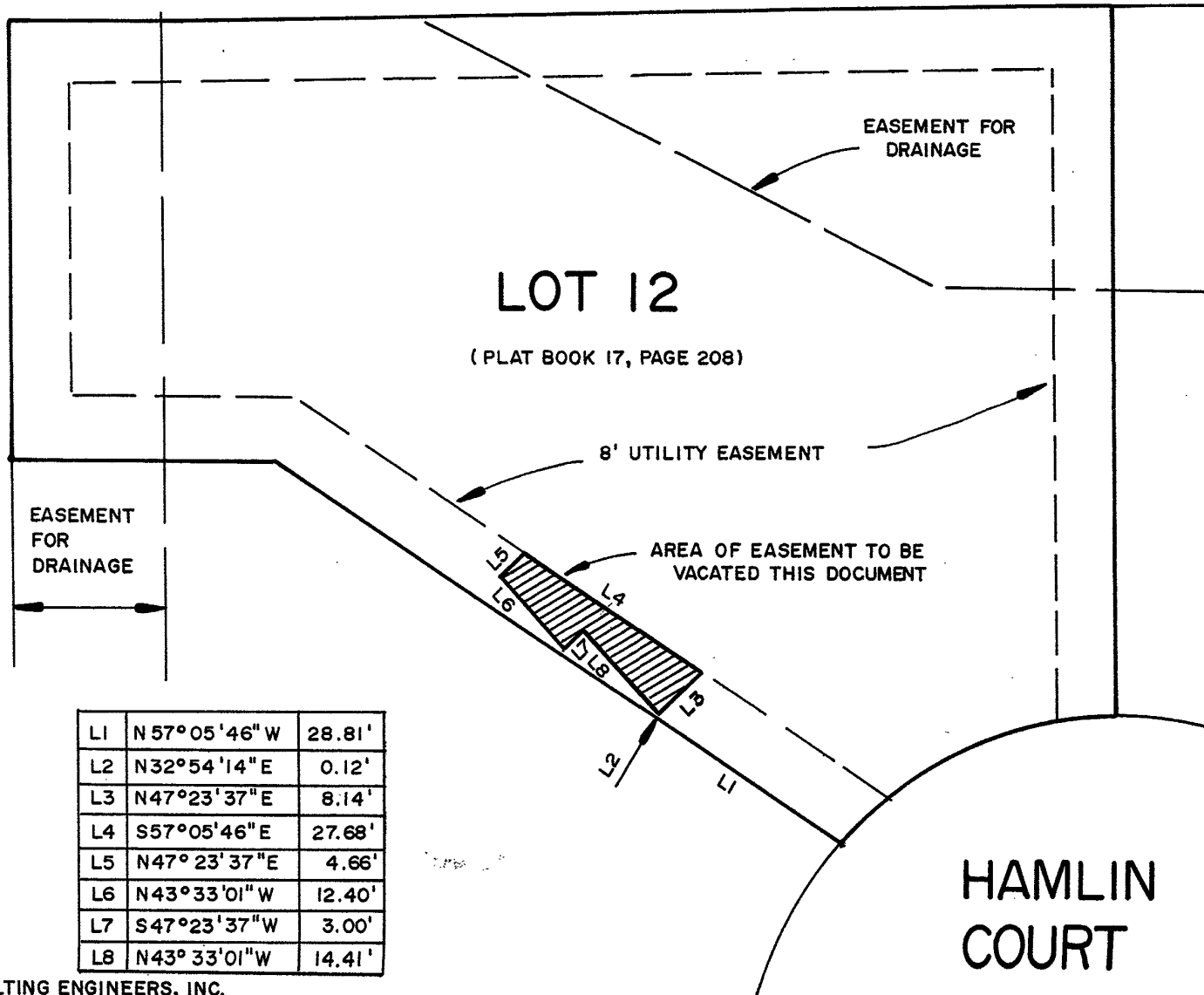


# EXHIBIT A

VACATION OF UTILITY EASEMENT  
 LOT 12, BLOCK I, COUNTY HEIGHTS,  
 PENNINGTON COUNTY, SOUTH DAKOTA

03VE004



L1	N 57° 05' 46" W	28.81'
L2	N 32° 54' 14" E	0.12'
L3	N 47° 23' 37" E	8.14'
L4	S 57° 05' 46" E	27.68'
L5	N 47° 23' 37" E	4.66'
L6	N 43° 33' 01" W	12.40'
L7	S 47° 23' 37" W	3.00'
L8	N 43° 33' 01" W	14.41'

PREPARED BY:  
 FISK LAND SURVEYING & CONSULTING ENGINEERS, INC.  
 P.O. BOX 8154, RAPID CITY, SD 57709 (605) 348-1538 APRIL 17, 2003 REVISED APRIL 28, 2003

HAMLIN  
 COURT

NO. 03-102