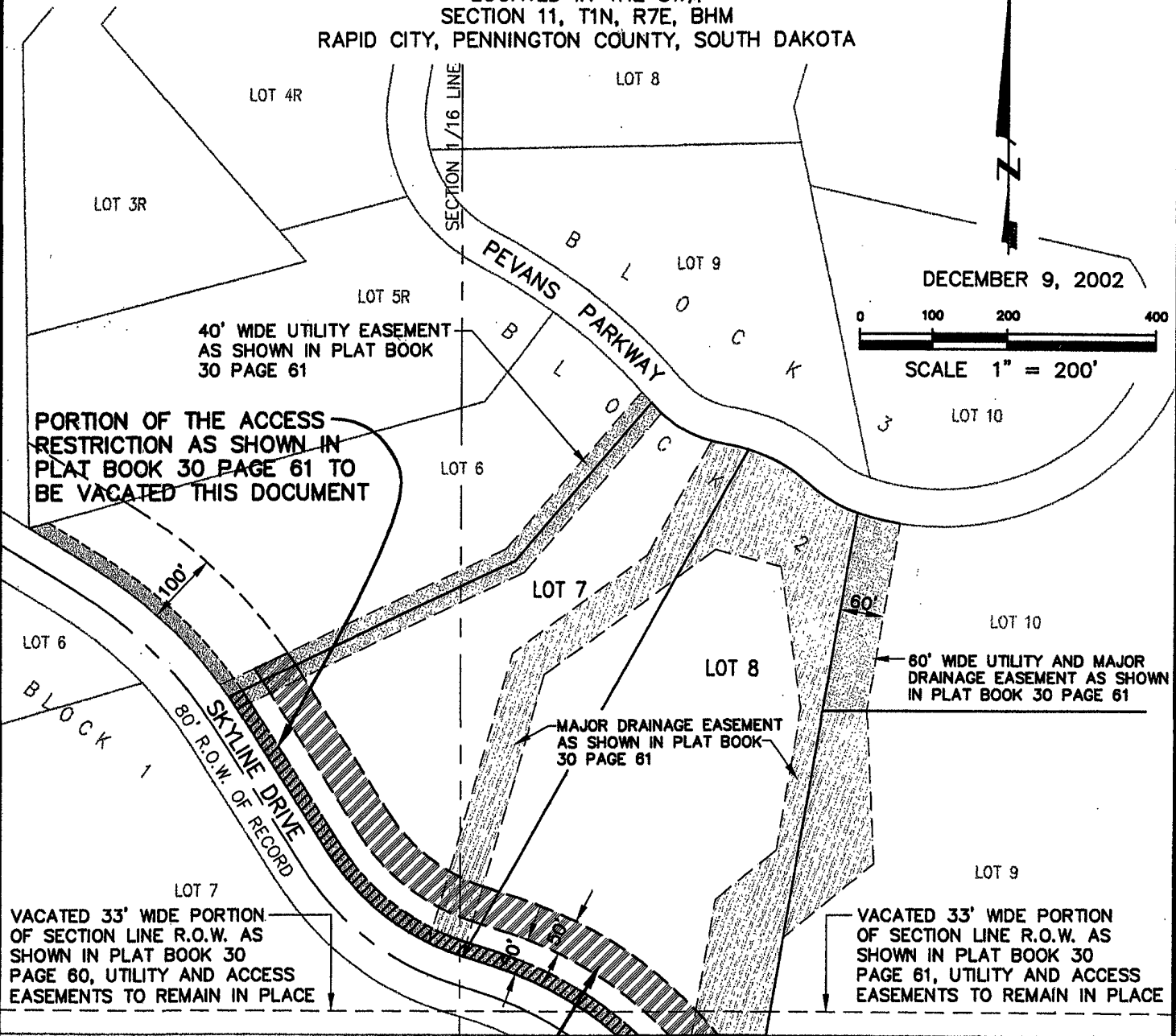


EXHIBIT 'A'

# VACATION OF A PORTION OF THE BUILDING SETBACK REQUIREMENT, AND VACATION OF A PORTION OF THE ACCESS RESTRICTION, ALL LYING IN LOT 7 AND LOT 8 OF BLOCK 2 SKYLINE PINES SUBDIVISION

03VE001

LOCATED IN THE SW<sup>1</sup>/<sub>4</sub>  
SECTION 11, T1N, R7E, BHM  
RAPID CITY, PENNINGTON COUNTY, SOUTH DAKOTA



C:\Program Files\Land Desktop\DRAWINGS\1449PLAT\17\_8EXB.dwg 12/10/02 07:46:43 AM MST



Renner & Sperlich Engineering Co.

616 Sixth St. \* Rapid City, SD 57701 \* 605/342-1191  
FAX: 605/342-1405 \* E-MAIL: RSEC@RAPIDNET.COM

