

LOT 10R
0.919 AC.

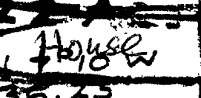
$\Delta = 22^{\circ}33'(R\&M)$
 $R = 283.80'(R\&M)$
 $L = 111.69'(R\&M)$

PREVIOUS
33' WIDE
EASEMENT

Assessed For
15,000

LOT 11R

$N 89^{\circ}38'11''W(M) 205.72'(M)$
 $N 89^{\circ}37'16''W(R) 205.34'(R)$

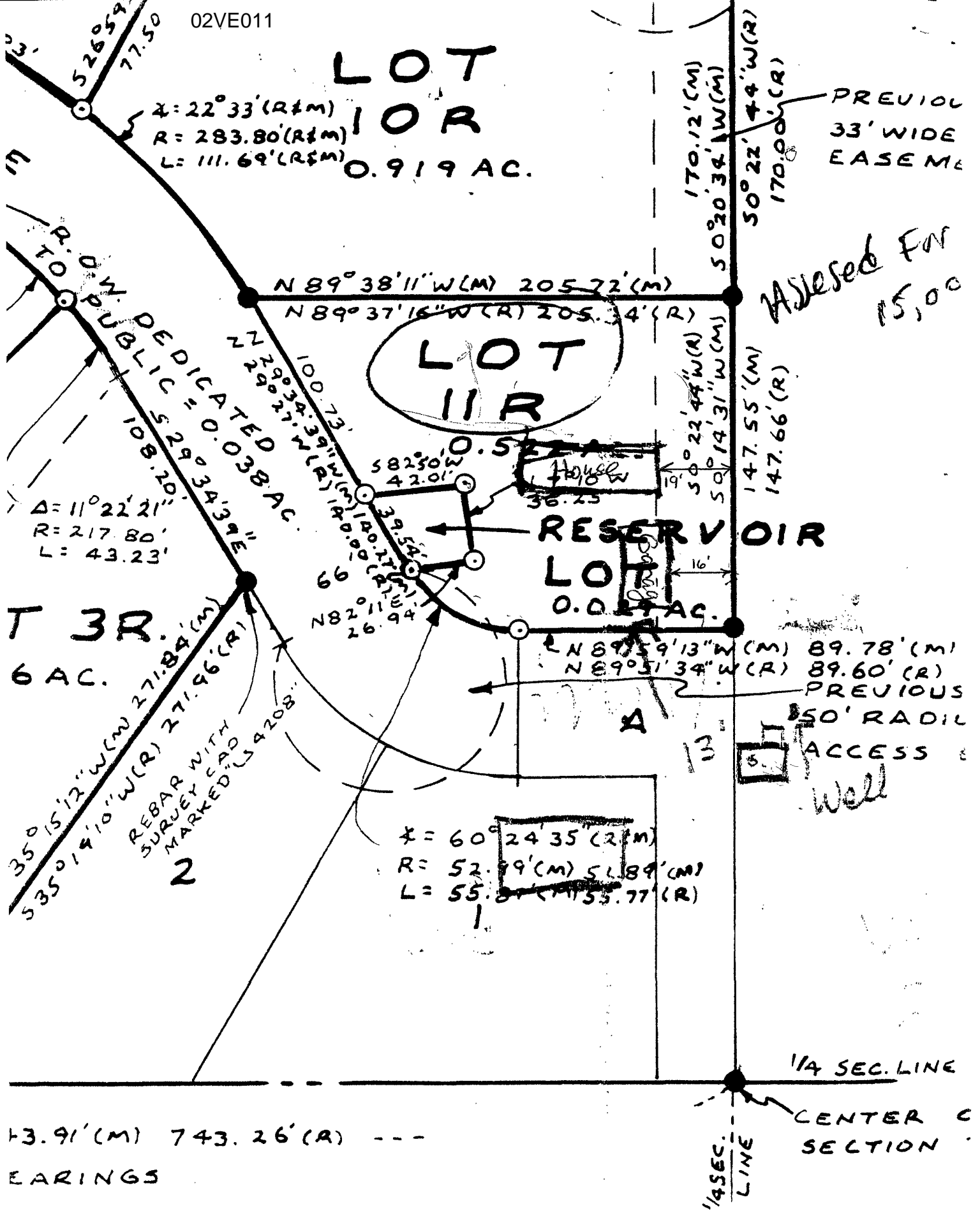


RESERVOIR
LOT
0.02 AC.

$N 89^{\circ}59'13''W(M) 89.78'(M)$
 $NE 90^{\circ}31'34''W(R) 89.60'(R)$

PREVIOUS
50' RADIAL
ACCESS
Well

$\Delta = 60^{\circ}24'35''(R\&M)$
 $R = 52.99'(M) 52.89'(M)$
 $L = 55.81'(M) 55.77'(R)$



13.91'(M) 743.26'(R) ---
EARINGS

1/4 SEC. LINE
CENTER SECTION