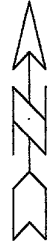


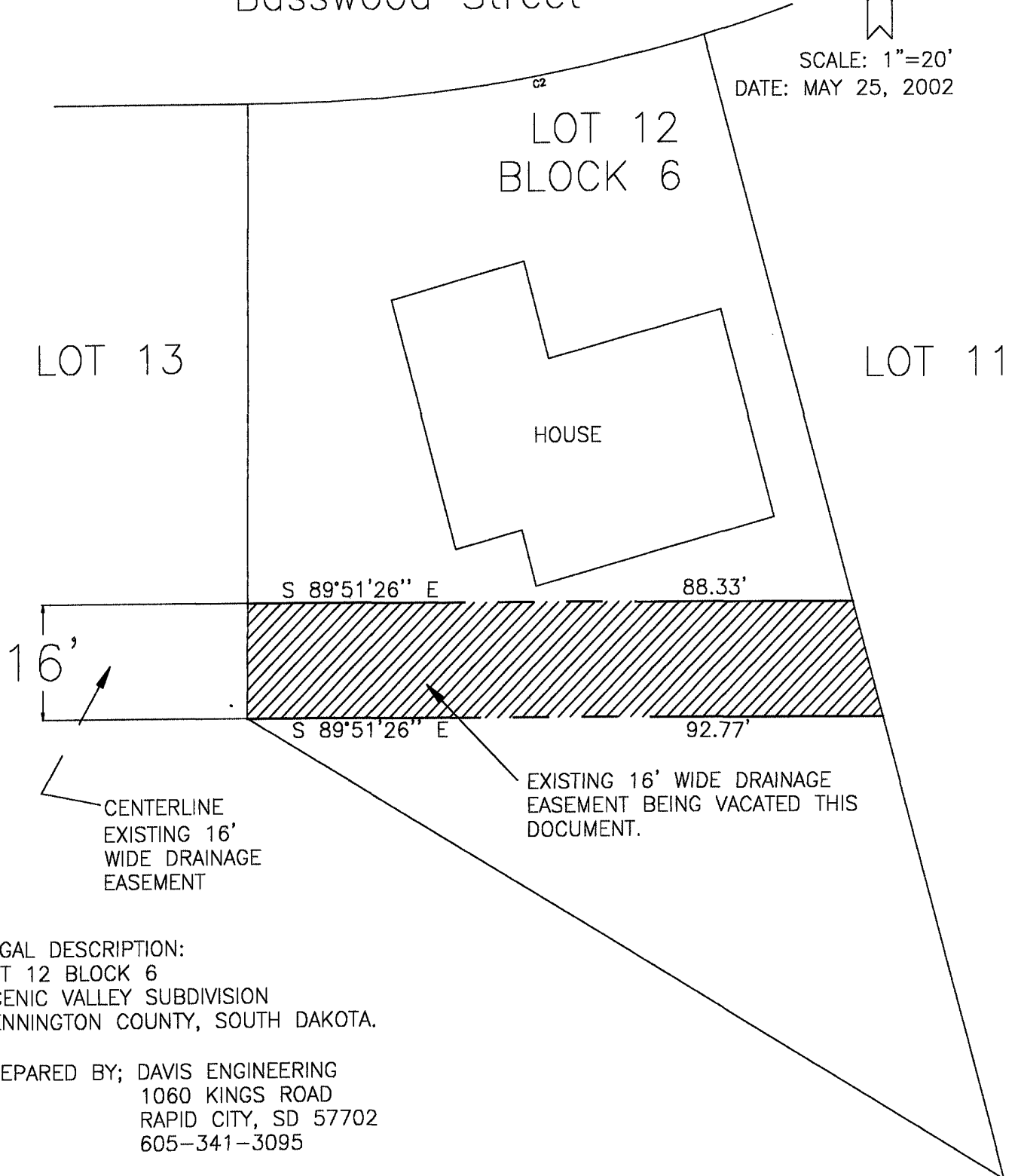
EASEMENT VACATION EXHIBIT "A".

SEE PLAT FILED IN BOOK 29 PAGE 184 AT THE
PENNINGTON COUNTY REGISTER OF DEEDS OFFICE.

Basswood Street



SCALE: 1"=20'
DATE: MAY 25, 2002



LEGAL DESCRIPTION:
LOT 12 BLOCK 6
SCENIC VALLEY SUBDIVISION
PENNINGTON COUNTY, SOUTH DAKOTA.

PREPARED BY; DAVIS ENGINEERING
1060 KINGS ROAD
RAPID CITY, SD 57702
605-341-3095