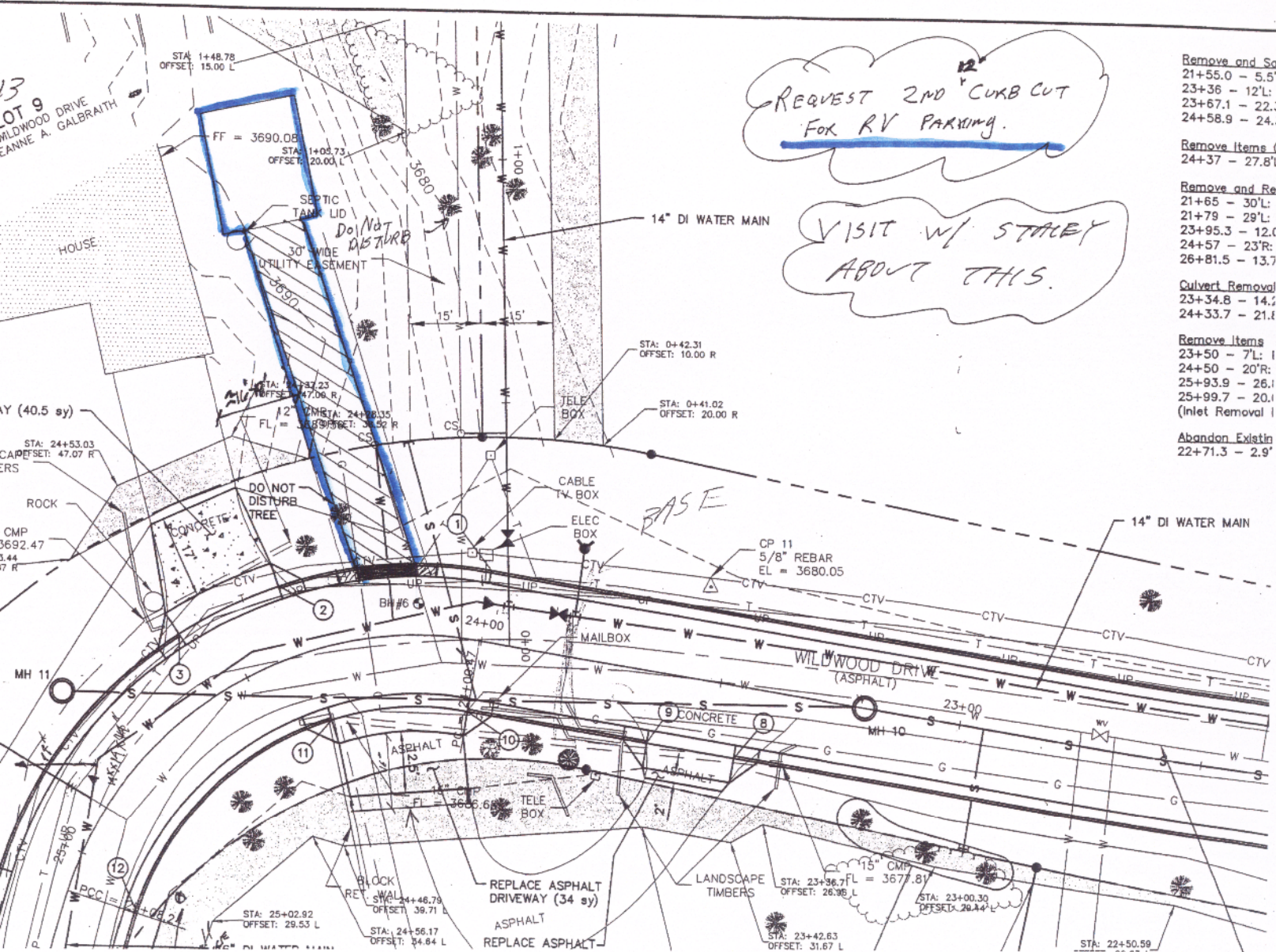




Geri & Harold Sullivan
 5576 Wildwood Drive
 Rapid City, SD 57702-8813
 ghsullivan@rap.midco.net



REQUEST 2ND CURB CUT
 FOR RV PARKING.

VISIT W/ STALEY
 ABOUT THIS.

- Remove and So
 21+55.0 - 5.5'
 23+36 - 12'L
 23+67.1 - 22.3'
 24+58.9 - 24.3'
- Remove Items (C
 24+37 - 27.8'
- Remove and Re
 21+65 - 30'L
 21+79 - 29'L
 23+95.3 - 12.0'
 24+57 - 23'R
 26+81.5 - 13.7'
- Culvert Removal
 23+34.8 - 14.4'
 24+33.7 - 21.8'
- Remove Items
 23+50 - 7'L
 24+50 - 20'R
 25+93.9 - 26.1'
 25+99.7 - 20.1'
 (Inlet Removal)
- Abandon Existin
 22+71.3 - 2.9'