

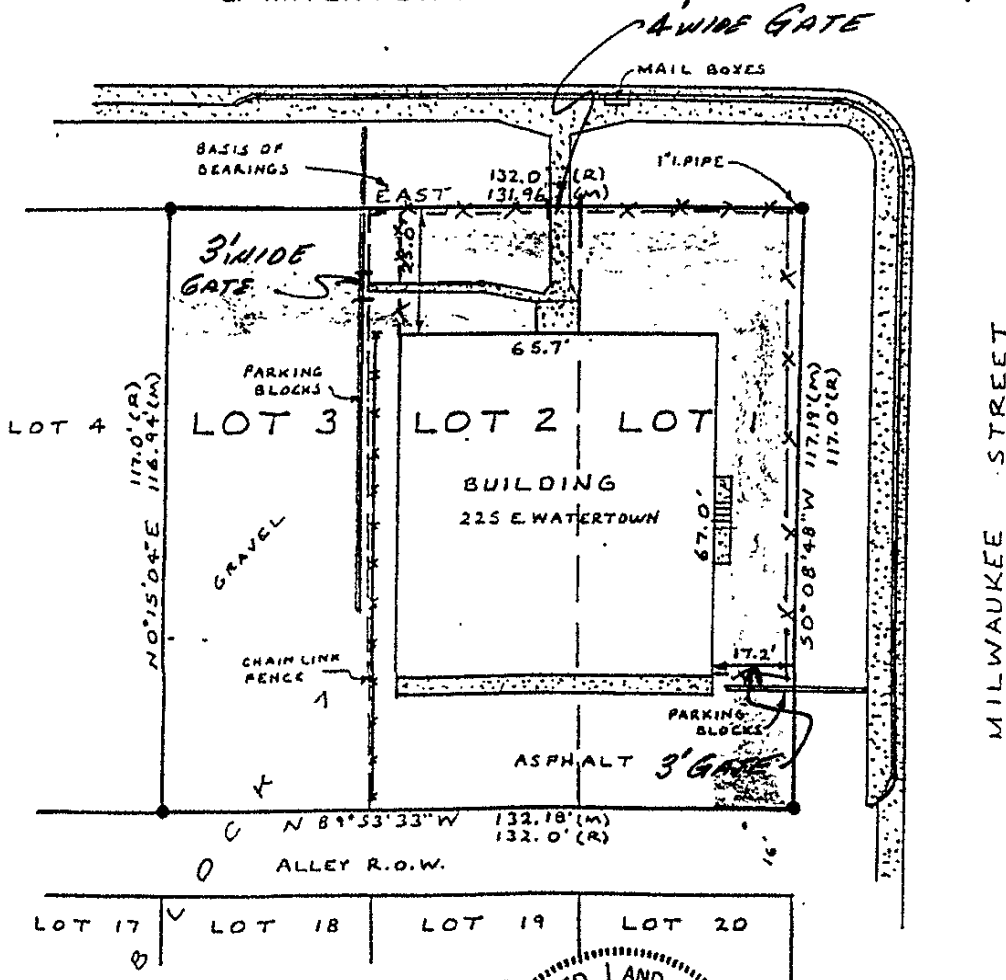
MAP OF BOUNDARY SURVEY OF
LOTS 1 THRU 3 OF BLOCK 7 OF SCHNASSE ADDITION
Rapid City, Pennington County, South Dakota.

LEGEND:

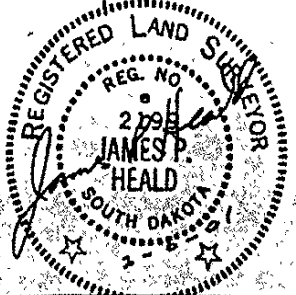
- Found survey monument (1/2" rebar unless otherwise noted).
- (R) Recorded in previous plat.
- (M) Measured in this survey.

SCALE 1" = 30'
FEBRUARY 5, 2001

E. WATERTOWN STREET



MILWAUKEE STREET



HEALD LAND SURVEYING
 2218 Lockwood Drive
 Rapid City, SD 57702
 (605) 343-1820