

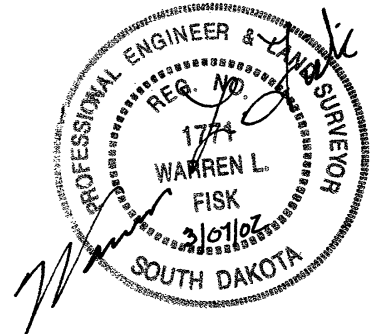
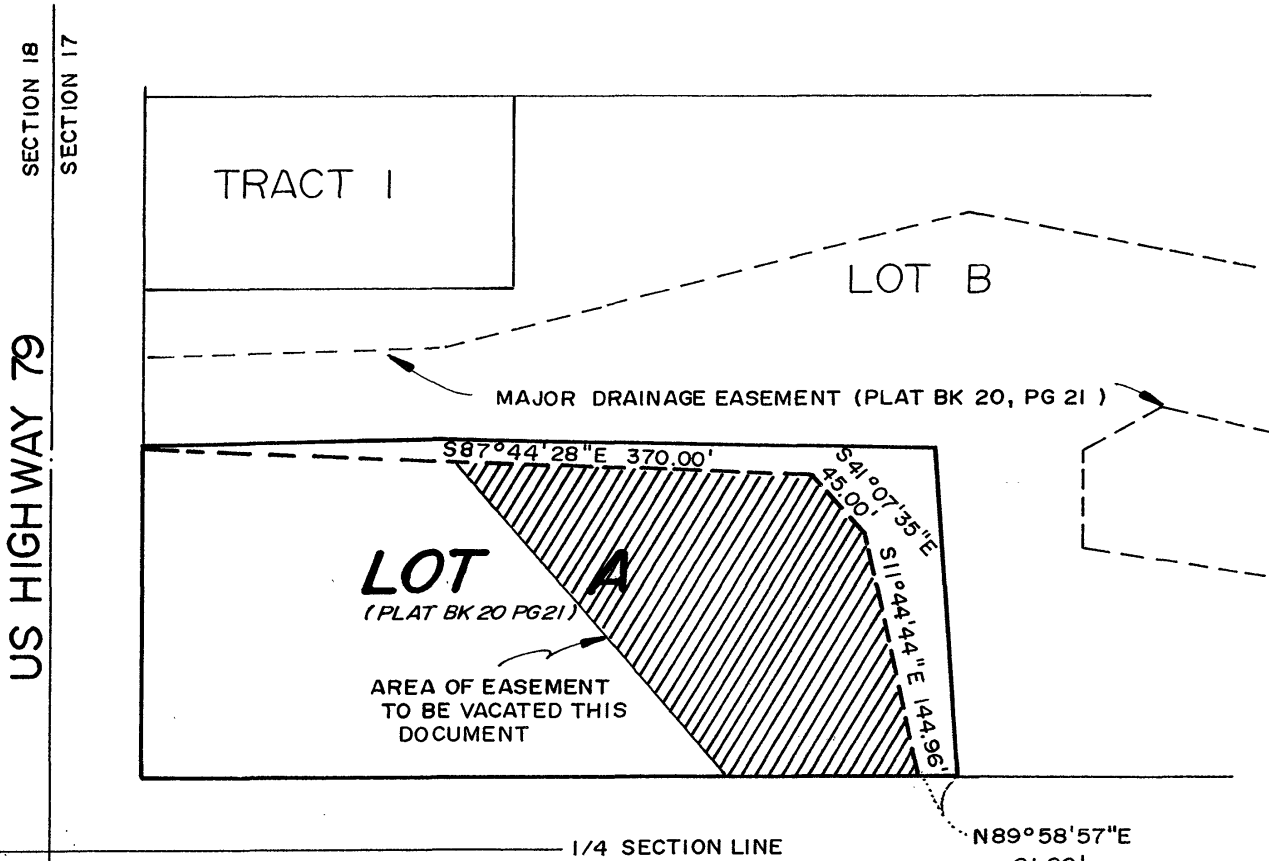
EXHIBIT A

VACATION OF A PORTION OF MAJOR DRAINAGE EASEMENT
LOT A OF KORMYLO SUBDIVISION
LOCATED IN THE SW1/4 NW1/4 OF SECTION 17, TIN, R8E, BHM,
RAPID CITY, PENNINGTON COUNTY, SOUTH DAKOTA

02VE004



1" = 100'



PREPARED BY:
FISK LAND SURVEYING & CONSULTING ENGINEERS, INC.
P.O. BOX 8154, RAPID CITY, SD 57709 (605) 348-1538 MARCH 4, 2002

NO. 01-01-01