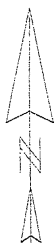
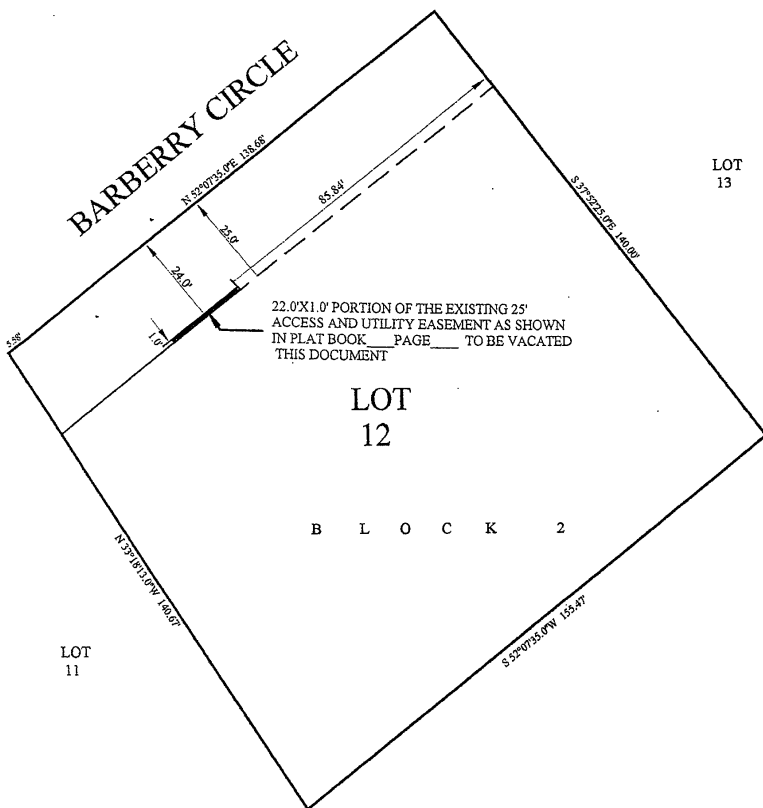


EXHIBIT "A"

VACATION OF ACCESS AND UTILITY EASEMENT

LOT 12 OF BLOCK 2 OF COUNTRYSIDE SOUTH SUBDIVISION,
PENNINGTON COUNTY, SOUTH DAKOTA.



FEBRUARY 19, 2002
SCALE 1"=30"



POLENZ LAND SURVEYING
3412 MEADOWBROOK DRIVE
RAPID CITY, SOUTH DAKOTA 57702
605/342-6155

