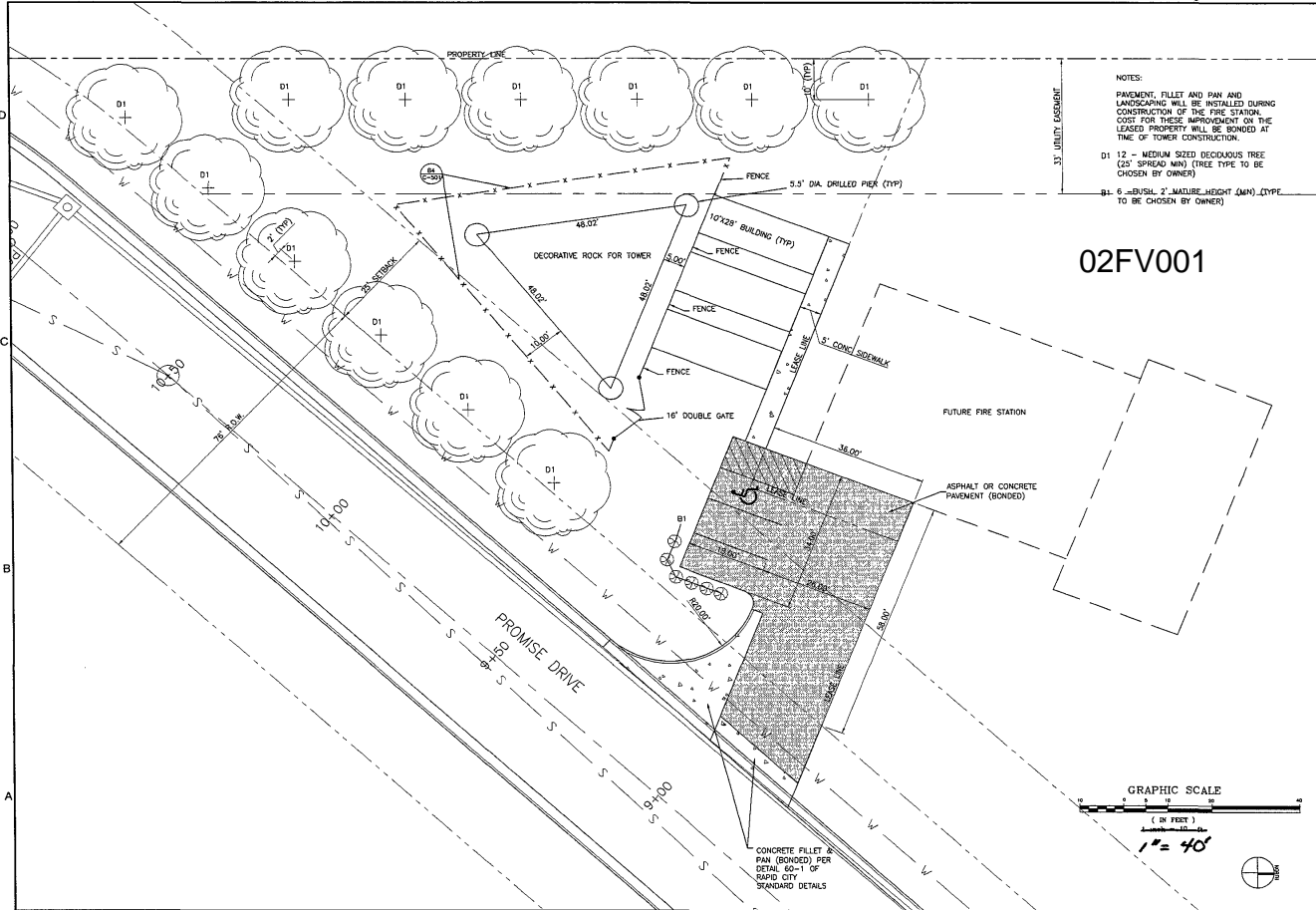


1 2 3 4 5

D
C
B
A



NOTES:

PAVEMENT, FILLET AND PAN AND LANDSCAPING WILL BE INSTALLED DURING CONSTRUCTION OF THE FIRE STATION. COSTS FOR THESE IMPROVEMENTS ON THE LEASED PROPERTY WILL BE BONDED AT TIME OF TOWER CONSTRUCTION.

D1 - 12' - MEDIUM SIZED DECIDUOUS TREE (2" SPREAD MAX) (TREE TYPE TO BE CHOSEN BY OWNER)

B1 - 6" BUSH, 2' MATURE HEIGHT (MAX) (TYPE TO BE CHOSEN BY OWNER)

33' UTILITY EASEMENT

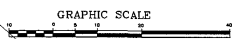
02FV001

FUTURE FIRE STATION

ASPHALT OR CONCRETE PAVEMENT (BONDED)

PROMISE DRIVE

CONCRETE FILLET & PAN (BONDED) PER DETAIL 60-1 OF RAPID CITY STANDARD DETAILS



GRAPHIC SCALE

(IN FEET)

1" = 40'



TSP Three, Inc.
600 Kansas City Street
Rapid City, SD 57701
phone: (605) 343-6102
fax: (605) 343-7159
www.teamsp.com
Architecture
Engineering
Planning

CONTINUED



PROJECT TITLE

WESTERN WIRELESS
SKYLINE TOWER
Rapid City, SD

12-17-01.00

MARK	DATE	DESCRIPTION	DRW
PROJECT NUMBER			0100
CHD FILE			C-101.DWG
ISSUED BY			100
CHECK BY			100

SHEET TITLE

SITE LAYOUT

C-101

1 2 3 4 5