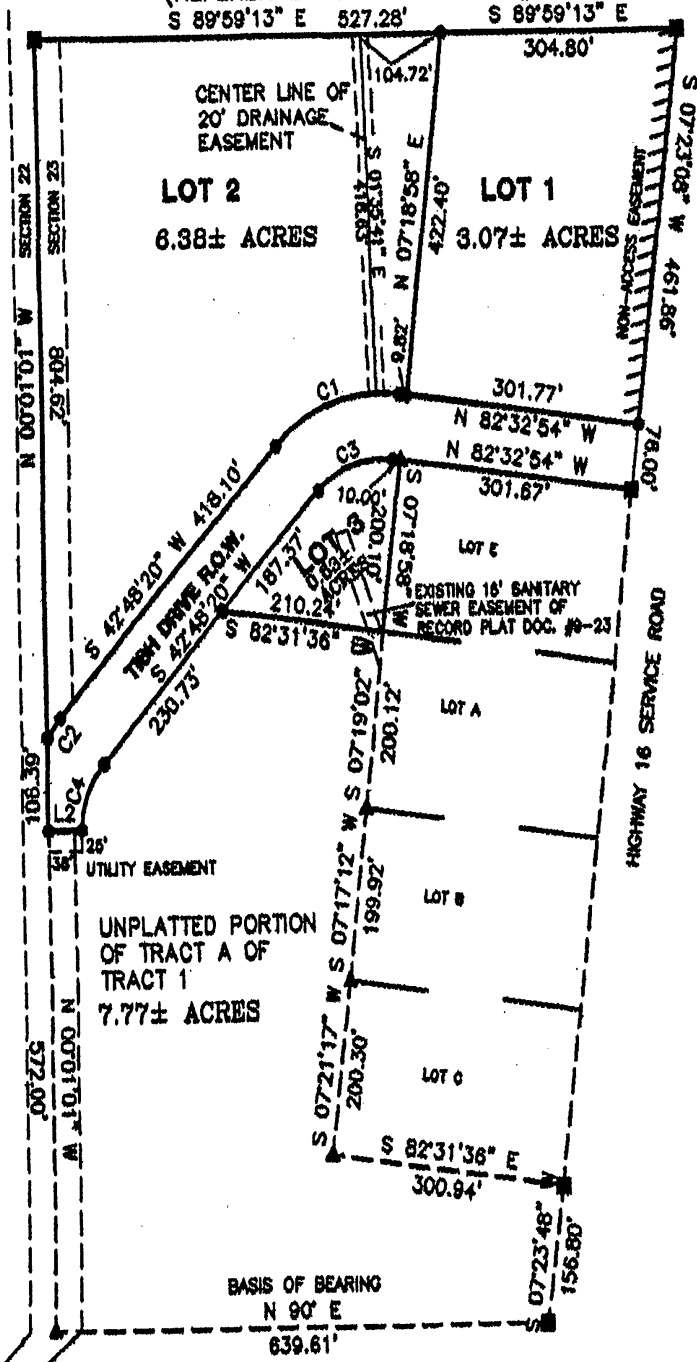


PRELIMINARY PLAT OF LOTS 1, 2 AND 3 OF
 OWEN HIBBARD SUBDIVISION AND TISH DRIVE
 DEDICATED RIGHT OF WAY, ALL LOCATED IN
 TRACT A OF TRACT 1 OF W1/2SW1/4,
 SECTION 23, T.1N., R.7E., B.H.M.,
 RAPID CITY, PENNINGTON COUNTY,
 SOUTH DAKOTA.

02FV001

(REFERENCE PLAT DOCUMENT #11-207)



33' SECTION LINE
 R.O.W.

GOLDEN EAGLE DRIVE