

01VE011

EXHIBIT 'A'

VACATION OF EASEMENT

LOT 2 OF BLOCK 1 VALLEYRIDGE SUBDIVISION
LOCATED IN THE NE¼ OF THE SE¼
SECTION 3, T1N, R8E, BHM
PENNINGTON COUNTY, SOUTH DAKOTA

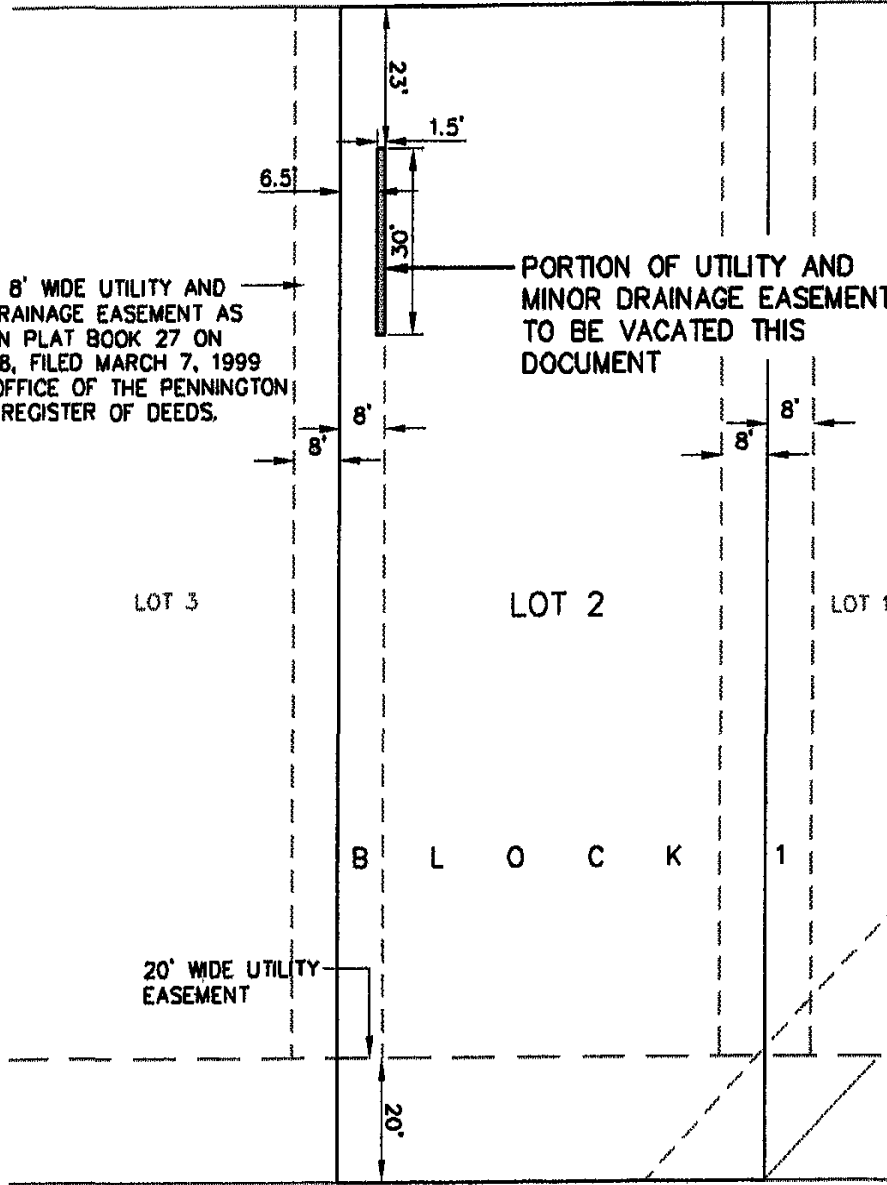
SOLITAIRE DRIVE
52' R.O.W.



JUNE 25, 2001
0 15 30
SCALE 1" = 30'

EXISTING 8' WIDE UTILITY AND
MINOR DRAINAGE EASEMENT AS
SHOWN IN PLAT BOOK 27 ON
PAGE 188, FILED MARCH 7, 1999
IN THE OFFICE OF THE PENNINGTON
COUNTY REGISTER OF DEEDS.

PORTION OF UTILITY AND
MINOR DRAINAGE EASEMENT
TO BE VACATED THIS
DOCUMENT



LOT 3

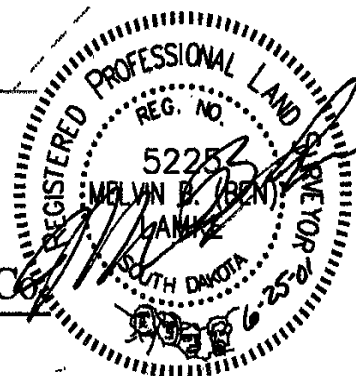
LOT 2

LOT 1

B L O C K 1

20' WIDE UTILITY
EASEMENT

30' WIDE MAJOR
DRAINAGE EASEMENT



Renner & Sperlich Engineering Co.

616 Sixth St. • Rapid City, SD 57701 • 605/342-1191
FAX: 605/342-1405 • E-MAIL: RSECORAPIDNET.COM