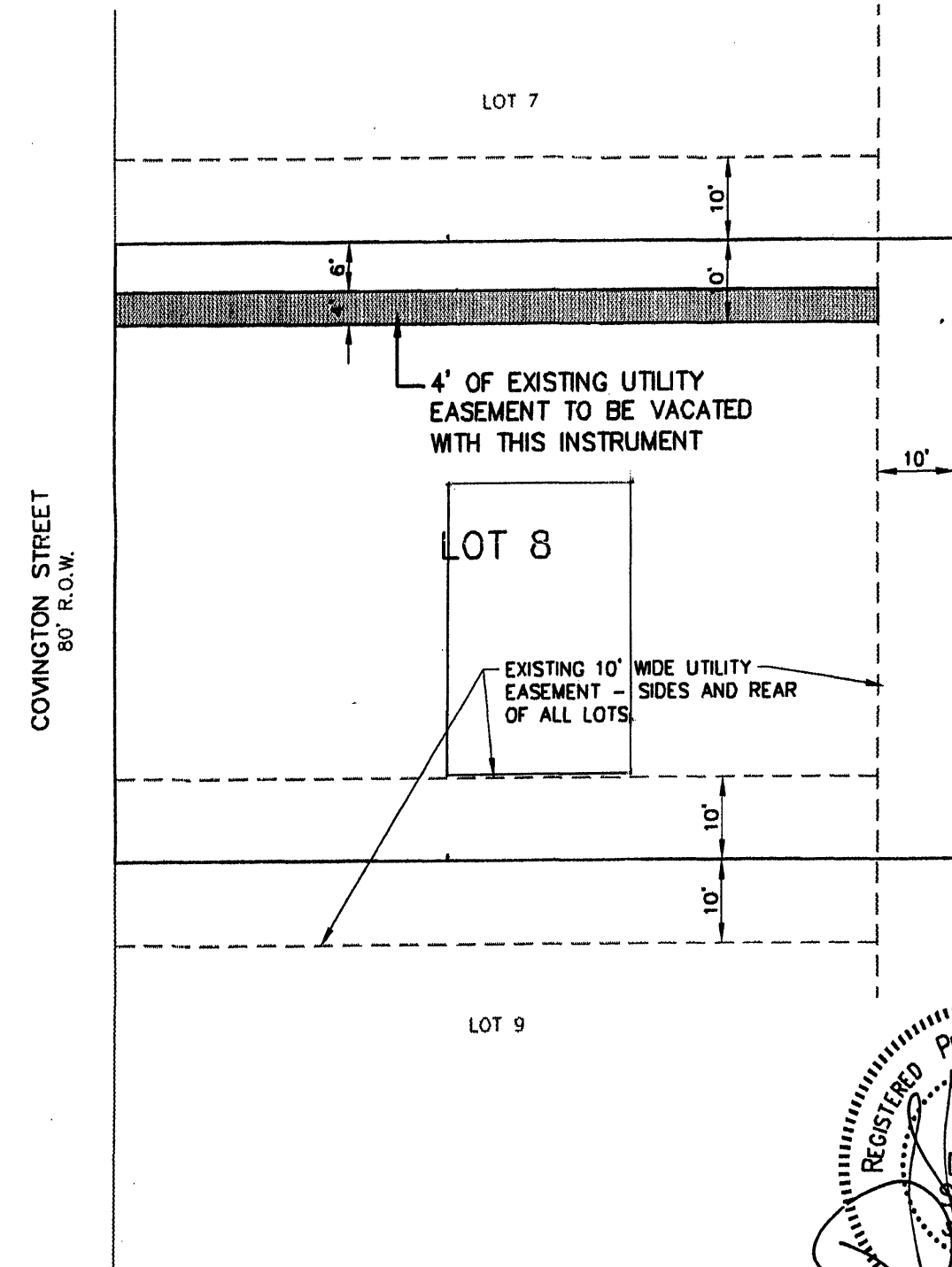


VACATION OF UTILITY EASEMENT

LOT 8 OF H & H ESTATES SUBDIVISION OF LOT W

LOCATED IN SW¹/₄ OF THE NE¹/₄, THE NW¹/₄ OF THE SE¹/₄, THE NE¹/₄ OF THE SW¹/₄
& THE SE¹/₄ OF THE NW¹/₄ ALL IN SECTION 10, T1N, R8E, BHM
PENNINGTON COUNTY, SOUTH DAKOTA



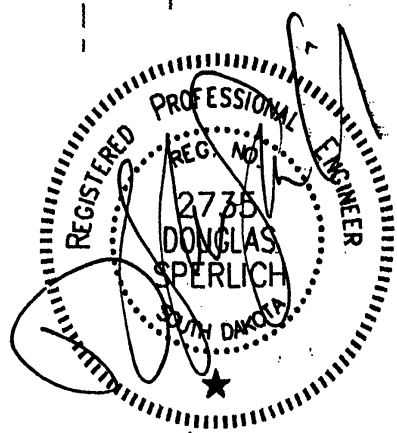
LOT 13

JUNE 21, 2001

SCALE 1" = 20'

LOT 12

LOT 9



Renner & Sperlich Engineering Co.

616 Sixth St. • Rapid City, SD 57701 • 605/342-1191
 FAX: 605/342-1405 • E-MAIL: RSEC@RAPIDNET.COM