

"EXHIBIT A"

UTILITY AND DRAINAGE EASEMENT VACATION
LOTS 1, 2 AND 3 OF R & L SUBDIVISION
LOCATED IN SW1/4 OF SECTION 22, T2N, R7E, B.H.M.
RAPID CITY, PENNINGTON COUNTY, SOUTH DAKOTA

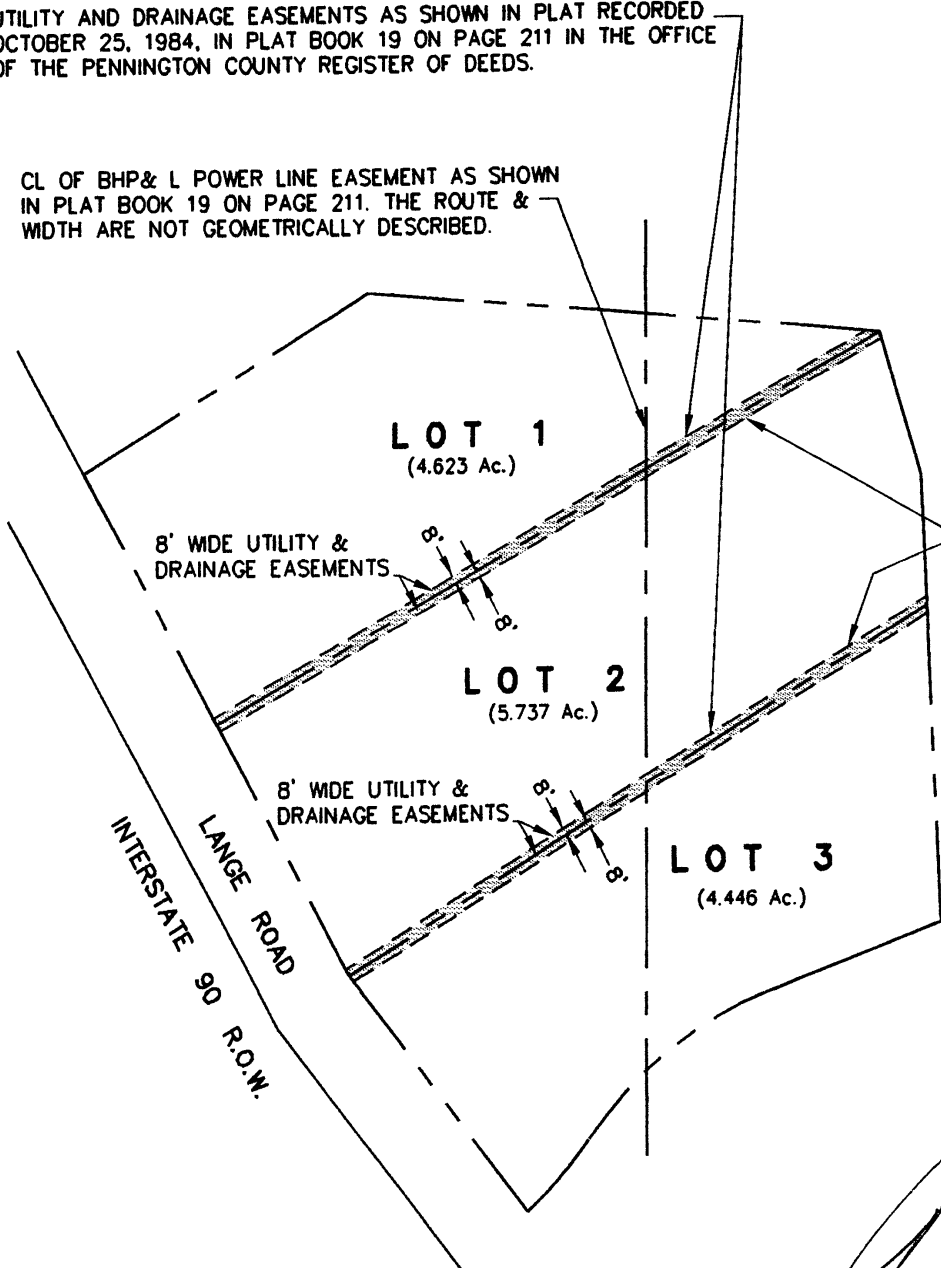
UTILITY AND DRAINAGE EASEMENTS AS SHOWN IN PLAT RECORDED
OCTOBER 25, 1984, IN PLAT BOOK 19 ON PAGE 211 IN THE OFFICE
OF THE PENNINGTON COUNTY REGISTER OF DEEDS.

CL OF BHP& L POWER LINE EASEMENT AS SHOWN
IN PLAT BOOK 19 ON PAGE 211. THE ROUTE &
WIDTH ARE NOT GEOMETRICALLY DESCRIBED.

MAY 15, 2001




SCALE 1" = 200'



UTILITY AND DRAINAGE
EASEMENTS TO BE VACATED
THIS DOCUMENT.



 **Renner & Sperlich Engineering Co.**
 616 SIXTH ST. • RAPID CITY, SD 57701 • 605/342-1191
 FAX: 605/342-1405 • E-MAIL: rsec@rapinet.com