

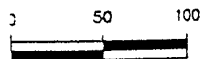
98VE013

EASEMENT VACATION

LOTS X AND Y OF SCHLOTTMAN ADDITION

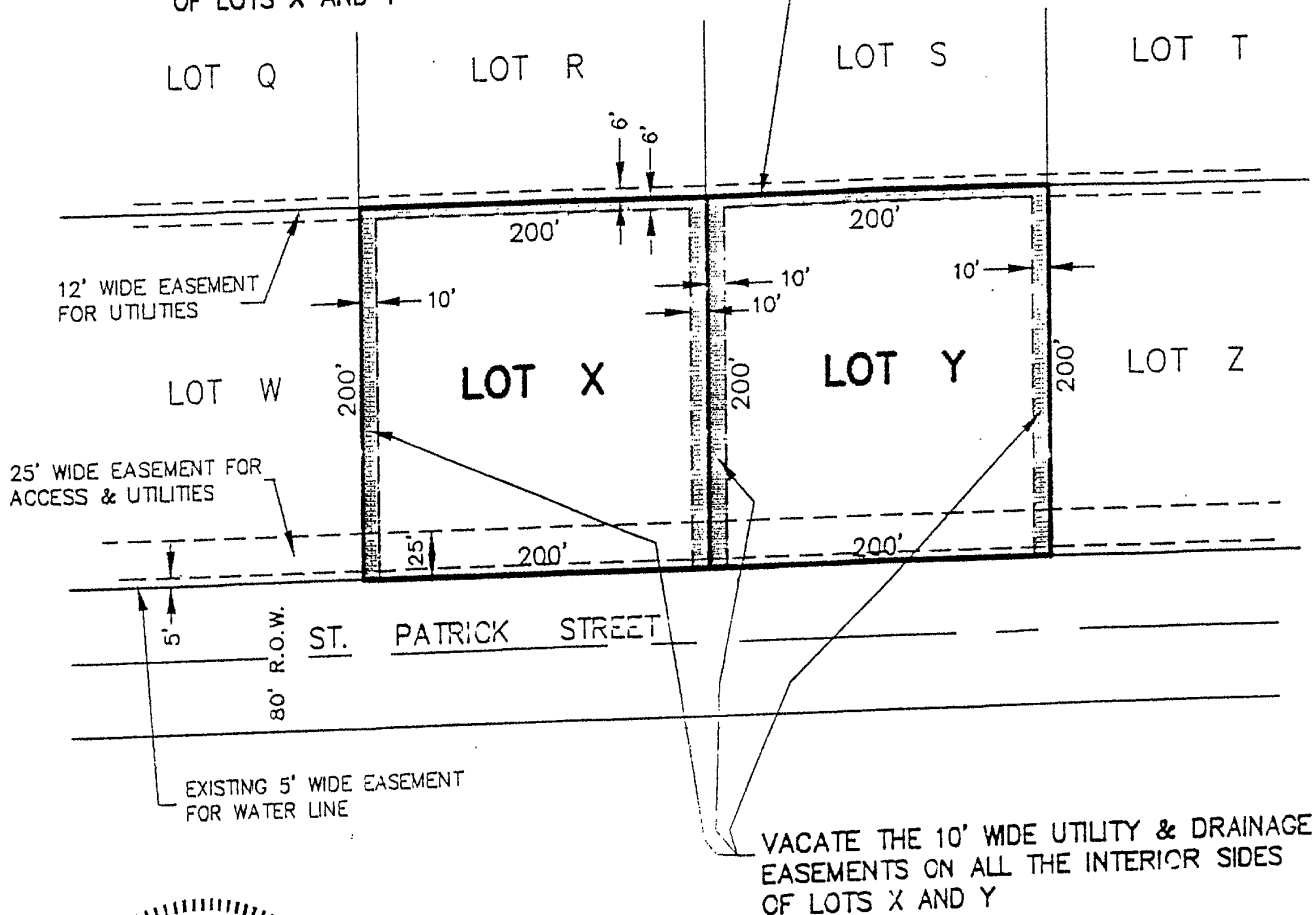
LOCATED IN SE1/4 OF SE1/4 OF
SECTION 5, T1N, R8E, BHM
PENNINGTON COUNTY, SOUTH DAKOTA

DEC. 18, 1998

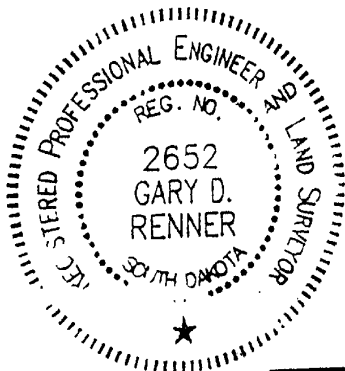


SCALE 1" = 100'

VACATE THE INTERIOR 6' WIDE EASEMENT
FOR UTILITIES CROSSING THE NORTH PORTION
OF LOTS X AND Y



VACATE THE 10' WIDE UTILITY & DRAINAGE
EASEMENTS ON ALL THE INTERIOR SIDES
OF LOTS X AND Y



Renner & Sperlich Engineering Co.

616 Sixth Street, Rapid City, SD 57701

605/342-1191