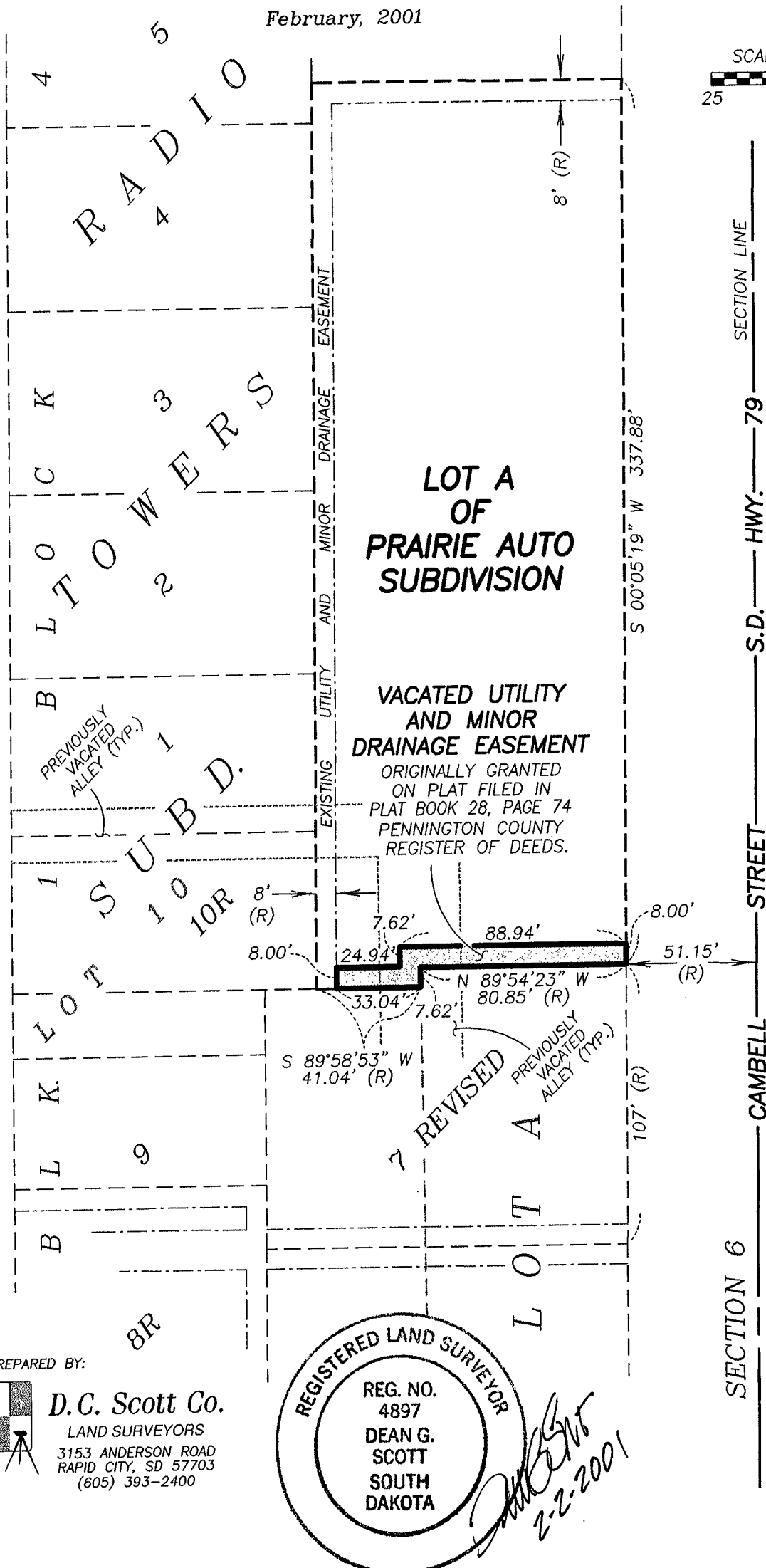
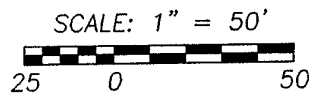


EXHIBIT A

Vacated Utility and Minor Drainage Easement
 situated in Lot A of Prairie Auto Subdivision,
 located in the SE1/4 SE1/4 of Section 6,
 Township 1 North, Range 8 East of the Black Hills Meridian,
 Rapid City, Pennington County, South Dakota,

February, 2001



PREPARED BY:
D.C. Scott Co.
 LAND SURVEYORS
 3153 ANDERSON ROAD
 RAPID CITY, SD 57703
 (605) 393-2400

