

01UR002

EXHIBIT "A"

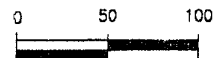
EASEMENT VACATION

LOTS X AND Y OF SCHLOTTMAN ADDITION

LOCATED IN SE1/4 OF SE1/4 OF
SECTION 5, T1N, R8E, BHM
PENNINGTON COUNTY, SOUTH DAKOTA

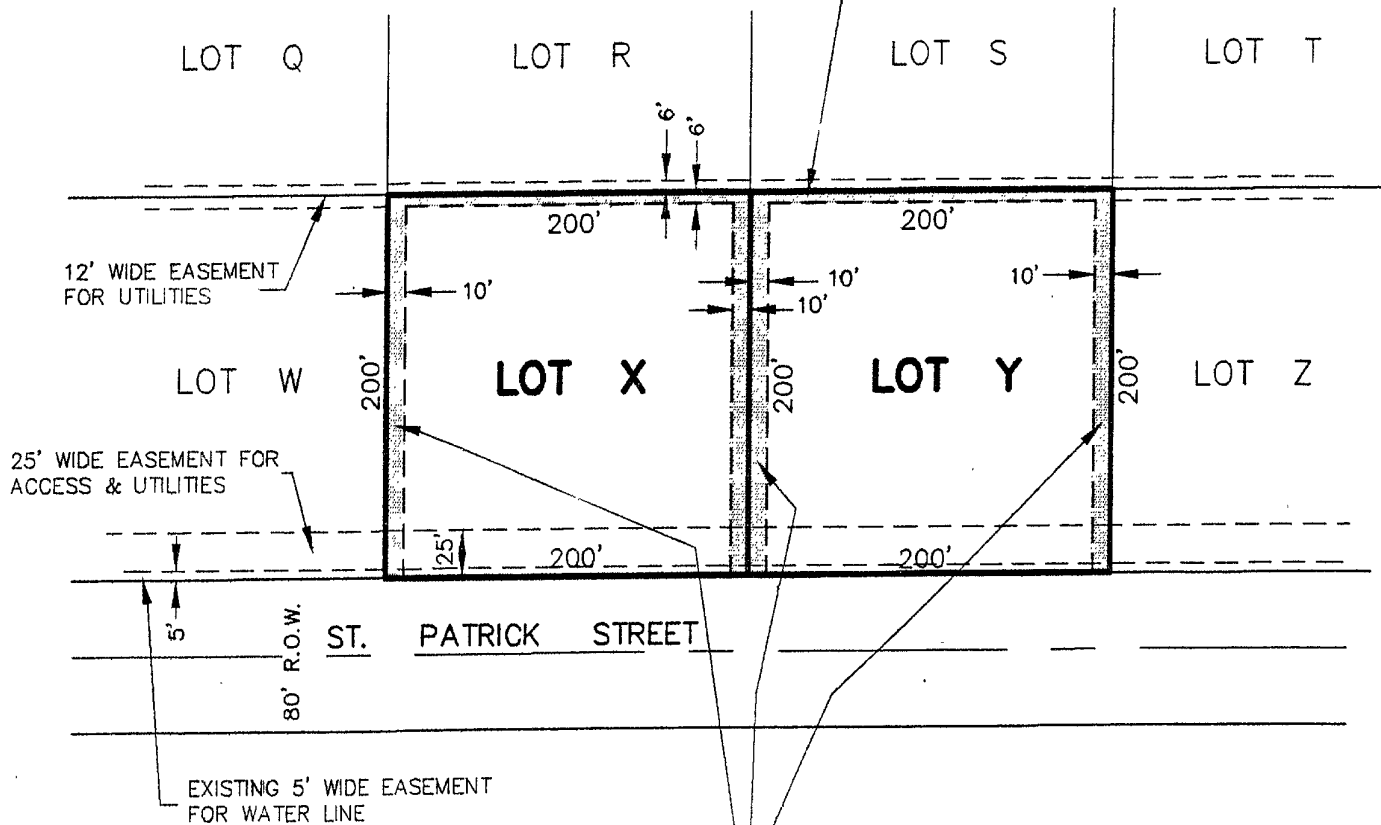


DEC. 18, 1998

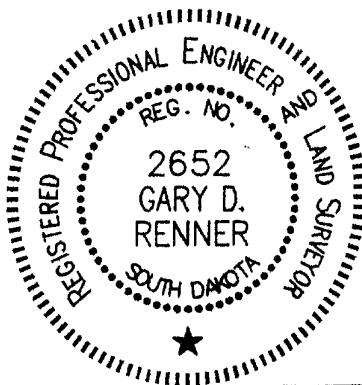



SCALE 1" = 100'

VACATE THE INTERIOR 6' WIDE EASEMENT
FOR UTILITIES CROSSING THE NORTH PORTION
OF LOTS X AND Y



VACATE THE 10' WIDE UTILITY & DRAINAGE
EASEMENTS ON ALL THE INTERIOR SIDES
OF LOTS X AND Y





Renner & Sperlich Engineering Co.

616 Sixth Street, Rapid City, SD 57701 605/342-1191