

PLAT OF
**LOTS 1, 2, 3 AND 4 OF BLOCK 4
 OF SPRING CANYON ESTATES**

(formerly Lot 2B & Lot 1 of Block 1 of Spring Canyon Estates and the NE1/4 of the SW1/4)
 LOCATED IN THE SW1/4 OF THE NW1/4, THE NW1/4 OF THE SW1/4
 AND IN THE NE1/4 OF THE SW1/4

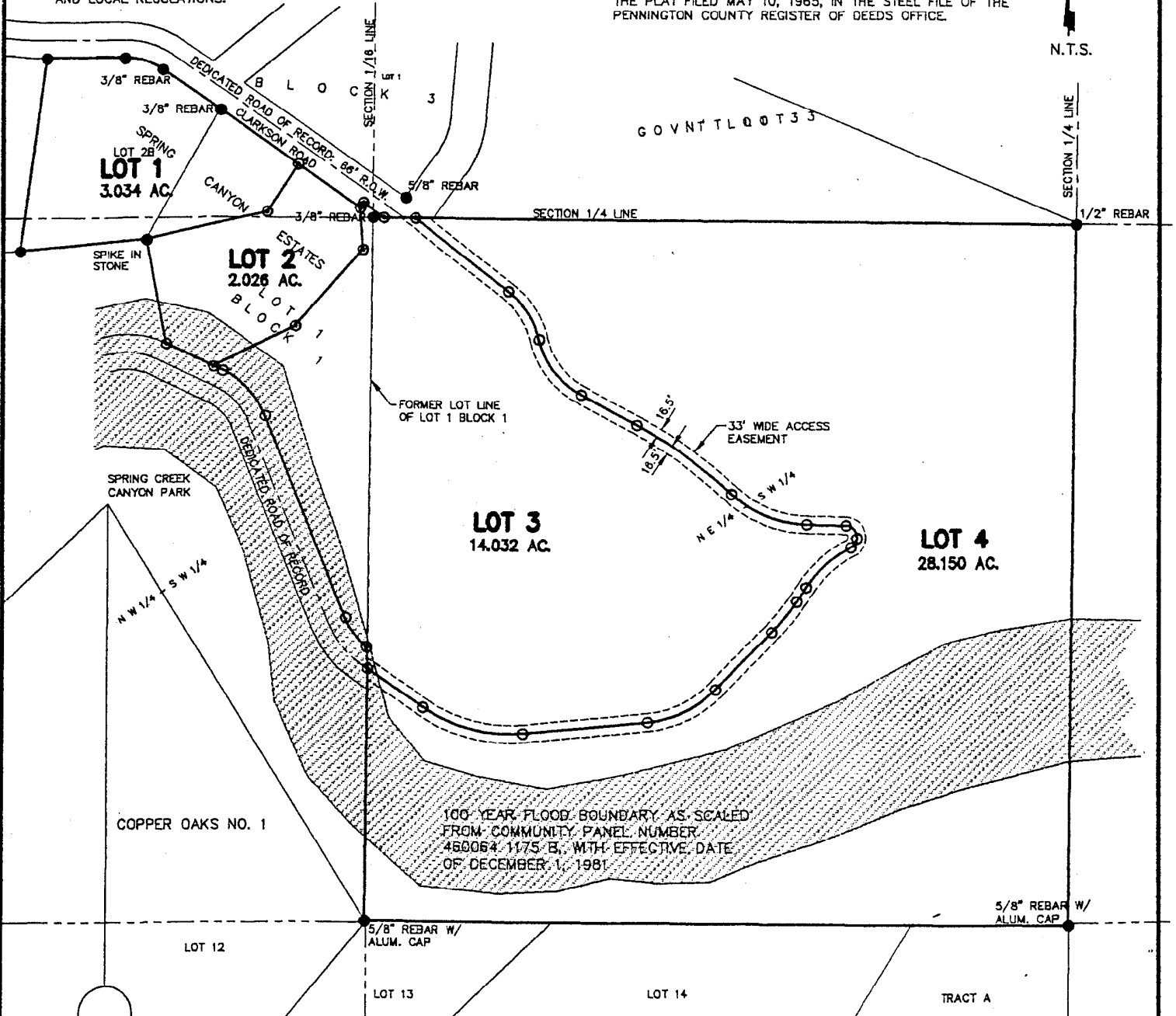
SECTION 5, T1S, R7E, BHM
 PENNINGTON COUNTY, SOUTH DAKOTA

SEE PLAT BOOK 11 PAGE 206, FILED NOV. 9, 1971, IN THE PENNINGTON COUNTY REGISTER OF DEEDS OFFICE FOR RECORD INFORMATION ON LOT 2B, BLOCK 1, SPRING CANYON ESTATES.

ANY FUTURE ON-SITE WASTEWATER SYSTEM TO BE ALLOWED ONLY AS TOTAL WASTEWATER CONTAINMENT SYSTEM UNLESS A CONVENTIONAL OR ALTERNATIVE ON-SITE WASTEWATER SYSTEM DESIGNED WHICH INCLUDES A COMPLETE REPORT OF A SOILS AND GEOLOGICAL INVESTIGATION BY A PROFESSIONAL ENGINEER THAT DEMONSTRATES THAT THE PROPOSED ON-SITE SYSTEM MEETS ALL STATE, COUNTY, AND LOCAL REGULATIONS.

SEE PLAT, FILED MAY 10, 1965, IN THE STEEL FILE OF THE PENNINGTON COUNTY REGISTER OF DEEDS OFFICE FOR RECORD INFORMATION ON LOT 1, BLOCK 1, SPRING CANYON ESTATES.

ACCEPTANCE OF THIS PLAT HEREBY VACATES THAT PORTION OF THE 66' WIDE DEDICATED RIGHT-OF-WAY LOCATED IN THE NE1/4 OF THE SW1/4 OF SECTION 5, T1S, R7E, B.H.M., AS SHOWN ON THE PLAT FILED MAY 10, 1965, IN THE STEEL FILE OF THE PENNINGTON COUNTY REGISTER OF DEEDS OFFICE.



Renner & Sperlich Engineering Co.

616 Sixth St. * Rapid City, SD 57701 * 605/342-1191
 FAX: 605/342-1405 * E-MAIL: X19FIAT@AOL.COM