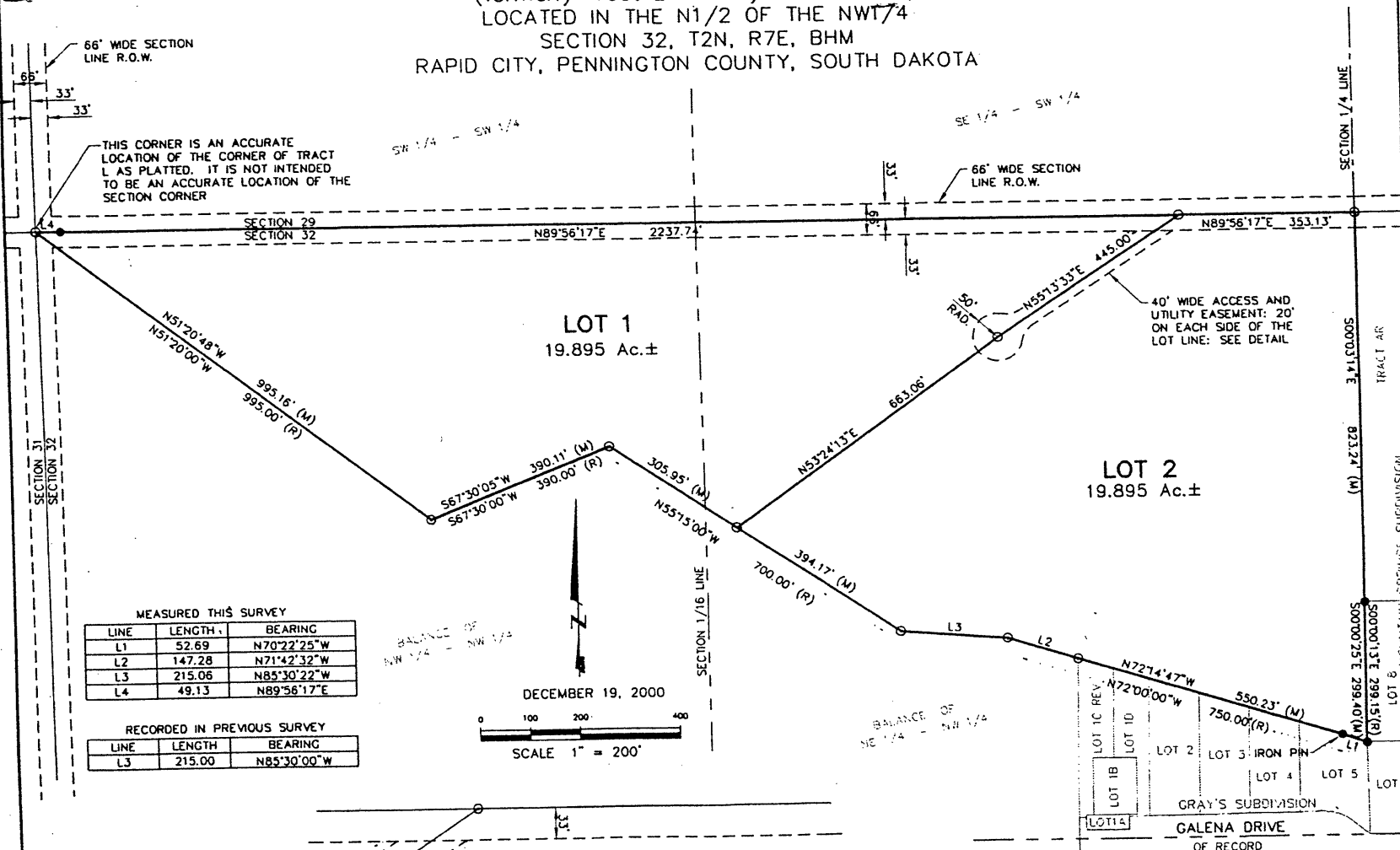


00PL136

PLAT OF  
**LOTS 1 AND 2 OF TRACT L**  
**GRAY'S SUBDIVISION**  
 (formerly Tract L of Gray's Subdivision)  
 LOCATED IN THE N1/2 OF THE NWT/4  
 SECTION 32, T2N, R7E, BHM  
 RAPID CITY, PENNINGTON COUNTY, SOUTH DAKOTA



THIS CORNER IS AN ACCURATE LOCATION OF THE CORNER OF TRACT L AS PLATTED. IT IS NOT INTENDED TO BE AN ACCURATE LOCATION OF THE SECTION CORNER

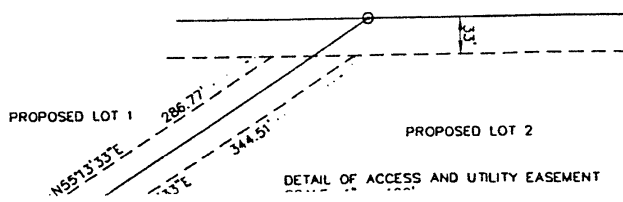
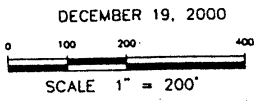
40' WIDE ACCESS AND UTILITY EASEMENT: 20' ON EACH SIDE OF THE LOT LINE: SEE DETAIL

MEASURED THIS SURVEY

LINE	LENGTH	BEARING
L1	52.69	N70°22'25"W
L2	147.28	N71°42'32"W
L3	215.06	N85°30'22"W
L4	49.13	N89°56'17"E

RECORDED IN PREVIOUS SURVEY

LINE	LENGTH	BEARING
L3	215.00	N85°30'00"W



- NOTES:
- ⊙ Denotes set 5/8" rebar with survey cap marked "Renner - 2652 and Sperlich"
  - Denotes Found Survey Monument marked LS 2652 unless otherwise noted
  - Denotes set 5/8" rebar with no cap for R.O.W. PC's & PT's
  - (R) Denotes Recorded in previous plat or description

