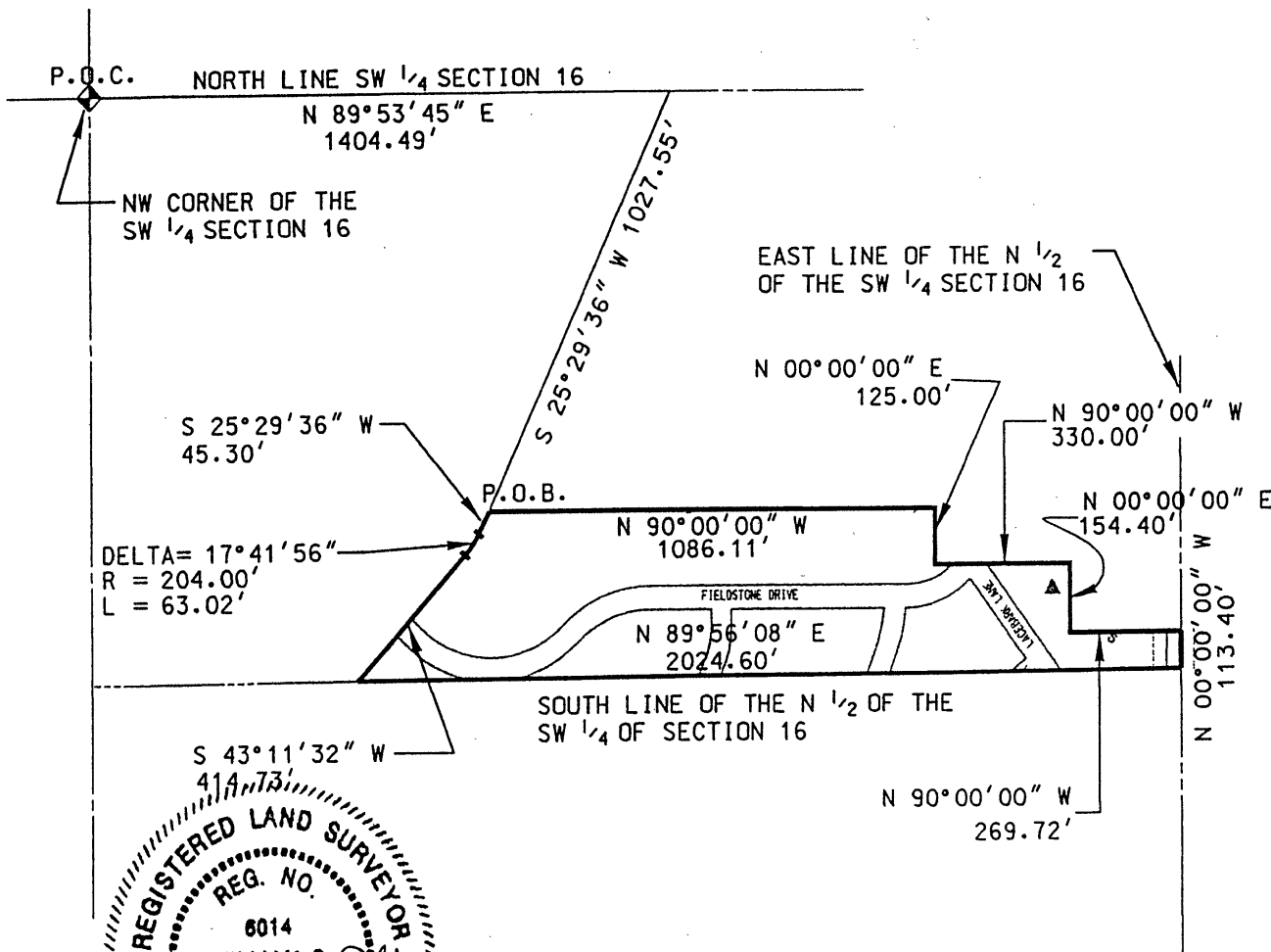


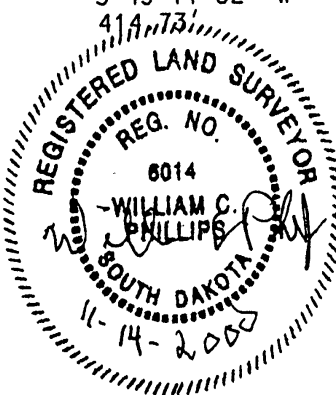
PLUM CREEK DEVELOPMENT

PARCEL C (RESIDENTIAL)

LOCATED IN THE N 1/2 OF THE SW 1/4 OF SECTION 16, T1N, R8E, B.H.M. PENNINGTON COUNTY, SOUTH DAKOTA



ROADS SHOWN ARE PROPOSED ROADS.



400 200 0 400

SCALE: 1" = 400'

SKETCH FOR ZONING DESCRIPTION

