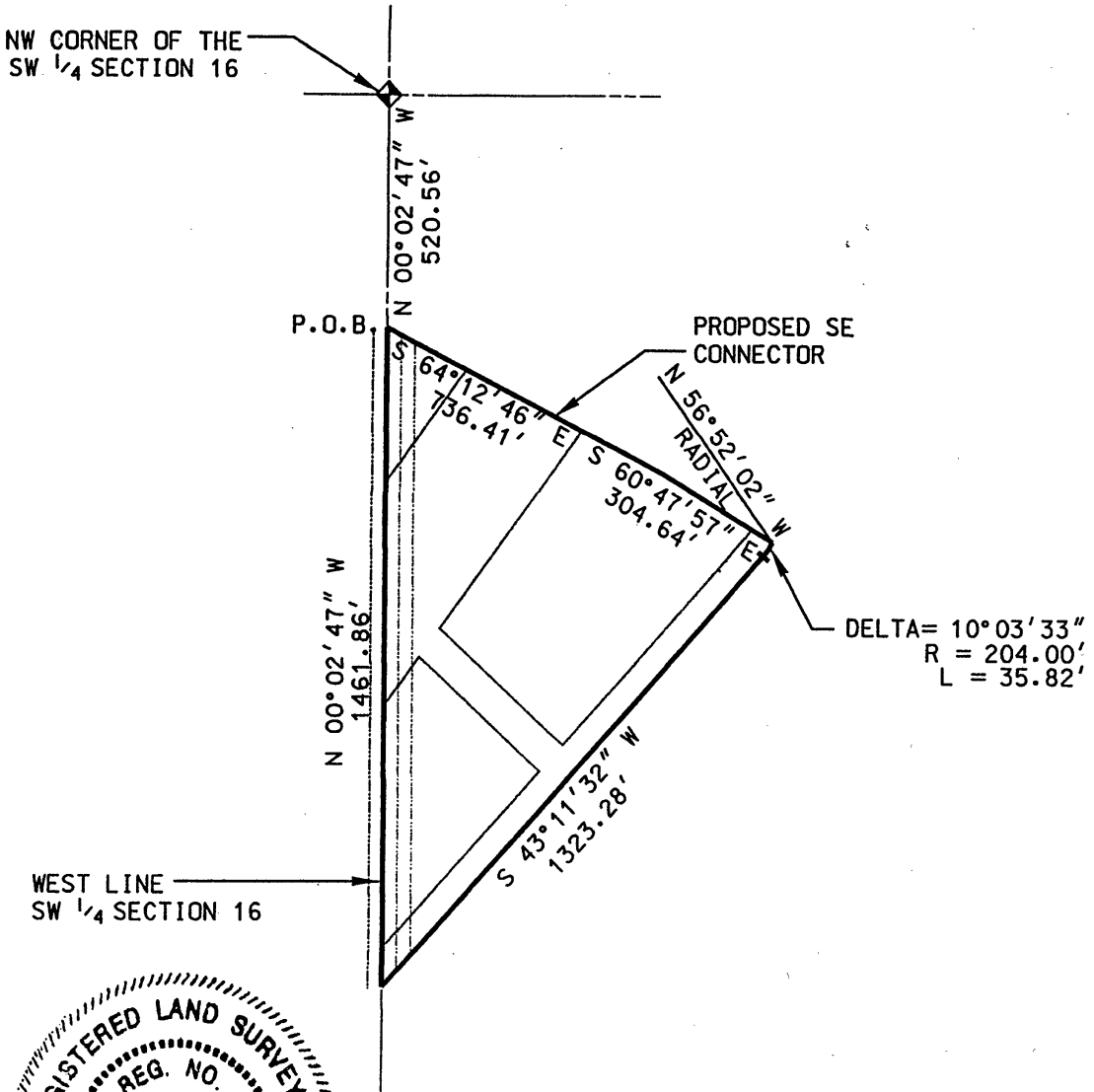


00PD064

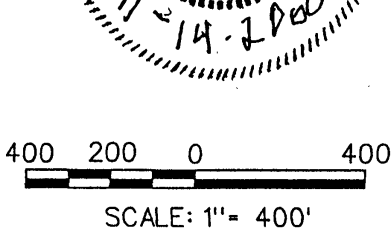
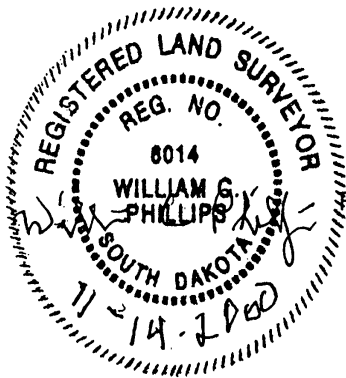
PLUM CREEK DEVELOPMENT

PARCEL B (GENERAL COMMERCIAL)

LOCATED IN THE SW 1/4 OF SECTION 16,
T1N, R8E, B.H.M., PENNINGTON COUNTY, SOUTH DAKOTA



ROADS SHOWN ARE PROPOSED ROADS.



SKETCH FOR ZONING DESCRIPTION

