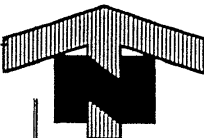
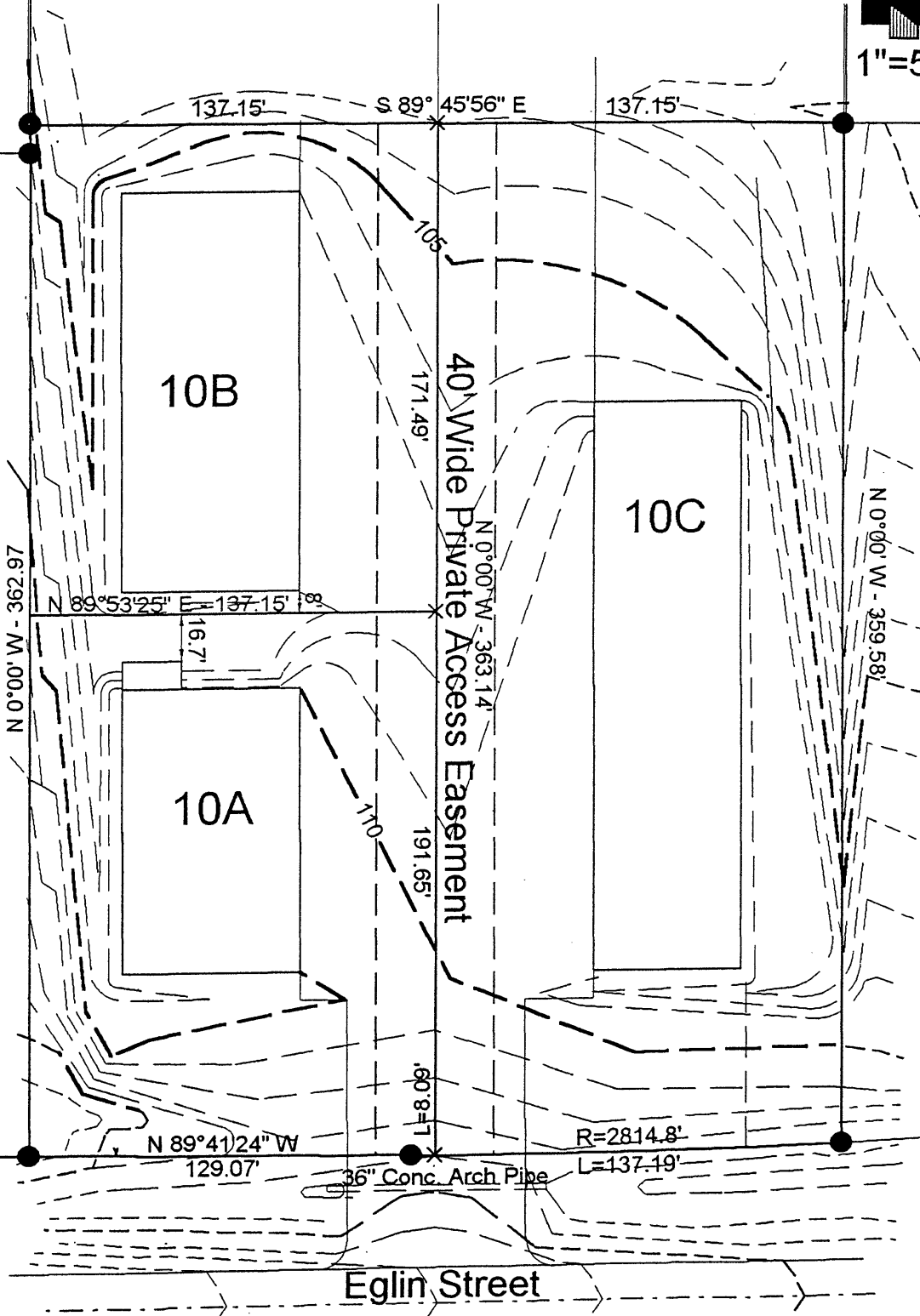


Plat of Lot 10A, 10B, and 10C of the GLM Subdivision

Formerly Lot 10 of the GLM Subdivision, located in the SW¼ of the SW¼ of Section 28, T2N, R8E, BHM, Rapid City, Pennington County, South Dakota



1"=50'



10B

10C

10A

40' Wide Private Access Easement

Eglin Street

36" Conc. Arch Pipe

137.15'

S 89° 45'56" E

137.15'

105

171.49'

N 0° 00' 00" W - 363.14'

N 0° 00' 00" W - 362.97'

N 89° 53'25" E

137.15'

16.7'

N 0° 00' 00" W - 359.58'

110

191.65'

60.81'

N 89° 41'24" W

129.07'

R=2814.8'

L=137.19'