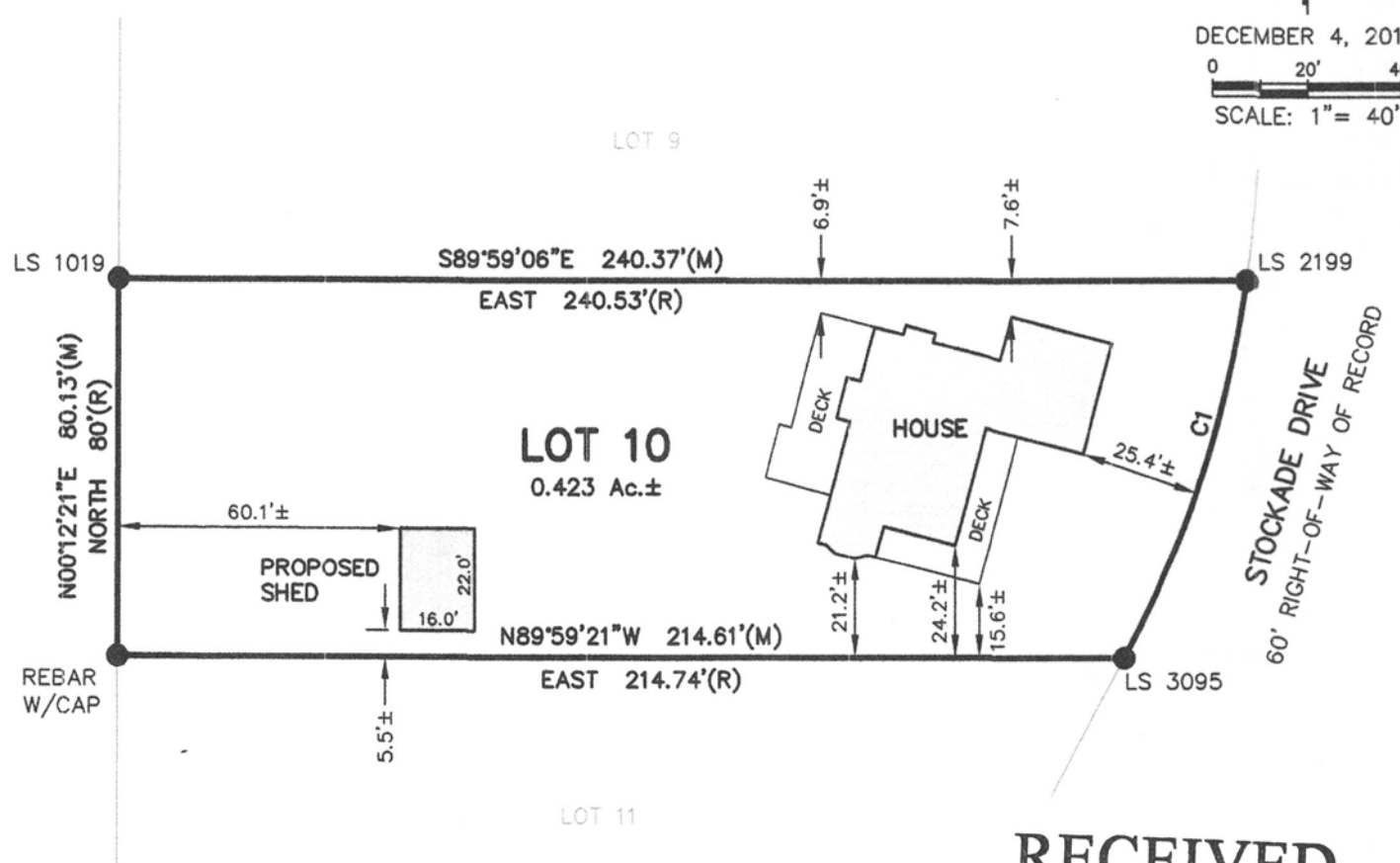


# LOT 10 OF BLOCK 2 OF COUNTRY CLUB HEIGHTS

LOCATED IN SECTION 10, T1N, R7E, BHM  
RAPID CITY, PENNINGTON COUNTY, SOUTH DAKOTA

DECEMBER 4, 2015  
0 20' 40'  
SCALE: 1" = 40'



## RECEIVED

MAR 04 2016

**RAPID CITY COMMUNITY PLANNING & DEVELOPMENT SERVICES**

### LEGEND

- Denotes Found Survey Monument as noted
- (R) Denotes Recorded in previous plat or description.
- (M) Denotes Measured in this survey.

**Basis of Bearings:** Geodetic North as determined by Global Positioning System. (GPS) WGS 84.

CURVE	ARC LENGTH	RADIUS	DELTA ANGLE	CHORD BEARING	CHORD LENGTH
C1(M)	84.66'	242.84'	19°58'30"	S18°00'35"W	84.23'
C1(R)	84.50'	242.84'			



**RENNER ASSOCIATES, LLC**  
CIVIL ENGINEERING · LAND SURVEYING

616 SIXTH STREET PH: 605. 721-7310  
RAPID CITY, SD 57701 FX: 605. 721-7313