

**1 REAR ELEVATION**  
 SCALE: 1/8" = 1'-0"



**2 RIGHT ELEVATION**  
 SCALE: 1/8" = 1'-0"

**EXTERIOR MATERIALS LEGEND**

EXTERIOR WINDOWS:  
 KAWNEER ENCORE 4 1/2" X 1 3/4" FRAMING SYSTEM. ALTERNATE GUESTROOM WINDOWS QUAKER E300 SERIES PW WINDOWS. COLOR: CLEAR ANODIZED ALUMINIUM EXTERIOR, INTERIOR AND SILL FLASHING.

EXTERIOR/INTERIOR STOREFRONT FRAMING AND ENTRANCE SWING DOORS:  
 KAWNEER ENCORE 6" X 1 3/4" FRAMING SYSTEM, INCLUDING 1" THICK INSULATED ALUMINIUM METAL PANEL SET INTO GLAZING POCKET AND SPANDRAL INSULATION. COLOR: CLEAR ANODIZED ALUMINIUM EXTERIOR AND INTERIOR.

AUTOMATIC SLIDING ENTRANCE DOORS:  
 EXTERIOR: BESAM OVER-HEAD CONCEALED SL500 WITH ECODOOR SEALS, MAGNETIC CATCHES AND EXTERIOR INSULATED CLEAR GLASS.  
 INTERIOR: BESAM OVER-HEAD CONCEALED SL500 WITH INTERIOR CLEAR GLASS. COLOR: CLEAR ANODIZED ALUMINIUM EXTERIOR AND INTERIOR.

GLAZING COMPONENTS:  
 EXTERIOR INSULATED CLEAR GLASS: GL-10 VIRACON VUE1-50.  
 EXTERIOR INSULATED SPANDRAL GLASS: GL-10S VIRACON VUE1-50 WITH HIGH-OPACITY WHITE V175 CERAMIC FRIT.  
 INSULATED GLASS SPACERS: CLEAR ANODIZED ALUMINIUM.  
 INTERIOR CLEAR GLASS: GL-1 VIRACON CLEAR FLOAT GLASS.  
 (T) DENOTES TEMPERED SAFETY GLASS IS REQUIRED.

EPDM ROOF SYSTEM: CARLISLE'S BLACK EPDM 90 mil SURE SEAL, COMPLETE WITH TREATED WD BLKG, VAPOR BARRIER, ROOF INSULATION, WALKWAY PADS AND ROOF BOARDS.

EXTERIOR INSULATED HOLLOW METAL DOORS AND FRAMES:  
 EXTERIOR GRADE PAINT, CUSTOM COLOR TO MATCH PLAIN ALUMINIUM.

APC WALL BASE:  
 CUSTOM FABRICATED WALL BASE, NATURAL APC SMOOTH PITLESS SURFACE WITH CLEAR SEALER FINISH. PROVIDE MITERED CORNERS AND ALIGN JOINTS WITH EIFS JOINTS.

GUESTROOM EXTERIOR GRILLS:  
 RUSKIN ELF15J THIN LINE STATIONARY LOUVER AND BLANK OFF BACKING PANELS. COLOR: CLEAR ANODIZED ALUMINIUM.

STONE:  
 BORTAL STONE PRODUCTS CULTURED STONE, PRO-FIT LEDGESTONE SOUTHWEST BLEND.

SHT MTL-WH, SHEET METAL GRAVEL STOP TYPE COPPING, PAC-CLAD CUSTOM FABRICATED ROOF EDGE FLASHING AND FASCIA. COLOR: BONE WHITE.

SHT MTL-GR, ELEVATOR OVERRUN GRAVEL STOP TYPE COPPING, SCUPPER AND DOWNSPOUT. PAC CLAD CUSTOM FABRICATED ROOF EDGE FLASHING AND FASCIA. COLOR: SLATE GRAY.

EIFS NOTE: PROVIDE HIGH IMPACT SYSTEM WITHIN 6'-0" ABOVE GRADE.

**EXTERIOR PATIO FENCE:** 4'-0" HIGH FENCE AND 3'-0" GATE. NATURES COMPOSITES TERRAFENCE WITH POSTS AT CORNERS, END AND EVENLY SPACED AT 5'-0" O.C. VERTICAL PICKETS SPACED 1" APART ON 3" HORIZONTAL RAILS. CONTEMPORARY SCHEME COLOR RAVENWOOD OR NATURAL SCHEME COLOR ASPEN GREY.

**CONTEMPORARY EXTERIOR SCHEME**

EIFS-LS, LIMESTONE/SANDSTONE:  
 PAREX TEXTURED, MULTI-TEXTURE SURFACE WITH PDR ACRYLIC FINISH.  
 EIFS-LSS, LIMESTONE/SANDSTONE:  
 PAREX SMOOTH, SAND SMOOTH SURFACE WITH PDR ACRYLIC FINISH. COLOR: PAREX MOONDANCE 3027L.

EIFS-DB, DARK BRONZE:  
 PAREX MEDIUM, SAND FINE SURFACE WITH PDR ACRYLIC FINISH. COLOR: PAREX TWIG 3021L.

EIFS-RR, RUSTIC RED:  
 PAREX SMOOTH, SAND SMOOTH SURFACE WITH PDR ACRYLIC FINISH. COLOR: PAREX RIVER ROCK 3043D.

EIFS-WH, WHITE:  
 PAREX SMOOTH, SAND SMOOTH SURFACE WITH PDR ACRYLIC FINISH. COLOR: PAREX SNOWBALL 10400L.

EIFS-GR, GREY:  
 PAREX SMOOTH, SAND SMOOTH SURFACE WITH PDR ACRYLIC FINISH. COLOR: PAREX BASALT 3015L.

**NATURAL EXTERIOR SCHEME**

EIFS-LS, LIMESTONE/SANDSTONE:  
 PAREX TEXTURED, MULTI-TEXTURE SURFACE WITH PDR ACRYLIC FINISH.  
 EIFS-LSS, LIMESTONE/SANDSTONE:  
 PAREX SMOOTH, SAND SMOOTH SURFACE WITH PDR ACRYLIC FINISH. COLOR: PAREX MOONDANCE 3027L.

EIFS-DB, DARK BRONZE:  
 PAREX MEDIUM, SAND FINE SURFACE WITH PDR ACRYLIC FINISH. COLOR: PAREX RAWHIDE T022L.

EIFS-RR, RUSTIC RED:  
 PAREX SMOOTH, SAND SMOOTH SURFACE WITH PDR ACRYLIC FINISH. COLOR: PAREX SANTIAGO 3032L.

EIFS-WH, WHITE:  
 PAREX SMOOTH, SAND SMOOTH SURFACE WITH PDR ACRYLIC FINISH. COLOR: PAREX SNOWBALL 10400L.

EIFS-GR, GREY:  
 PAREX SMOOTH, SAND SMOOTH SURFACE WITH PDR ACRYLIC FINISH. COLOR: PAREX BASALT 3015L.

SUN SHADE, RUSKIN RECTANGULAR TUBE BLADE SUNSHADE SSRTH, CLEAR ANODIZED ALUMINIUM FINISHED.

ROOF HATCH, JL INDUSTRIES RHG-2-5TH ROOF ACCESS HATCH 30" X 54" WITH SAFETY RAILING.

ENTRANCE CANOPY, STANDING SEAM METAL ROOF. PAC-CLAD SNAP CLAD 12" STANDING SEAM METAL ROOFING. COLOR: METALLIC ZINC.

ENTRANCE CANOPY, CANOPY ROOF EDGE FLASHING AND FASCIA. PAC-CLAD CUSTOM FABRICATED ROOF EDGE FLASHING AND FASCIA. COLOR: DARK BRONZE.

ENTRANCE CANOPY, VENTED SOFFIT. PAC-CLAD PAC-750 FULLY VENTED SOFFIT PANELS. COLOR: DARK BRONZE.

ENTRANCE CANOPY, STEEL FRAME PAINT FINISHED. EXTERIOR GRADE PAINT, CUSTOM COLOR TO MATCH PAC-CLAD COLOR: DARK BRONZE. GRID ALL WELD SMOOTH PRIOR TO PAINT APPLICATION.

ENTRANCE CANOPY, LIN WD CLG, WOOD GRAIN PREFINISHED UNPERFORATED PANELS. ARMSTRONG METALWORKS LINEAR EXTERIOR 5491 8" WOOD LOOK METAL CEILING. COLOR: DARK CHERRY FXDC2.

STAMPED CONCRETE CANOPY AND PATIO. CUSTOM SIZE STAMP 9' X 54" BASED ON BUTTERFIELD COLOR 18" X 36" BLUESTONE BST4210. COLOR: SCOFIELD, LITHICHROME, COLOR 1139 Burberry Beige.

**GENERAL NOTES**

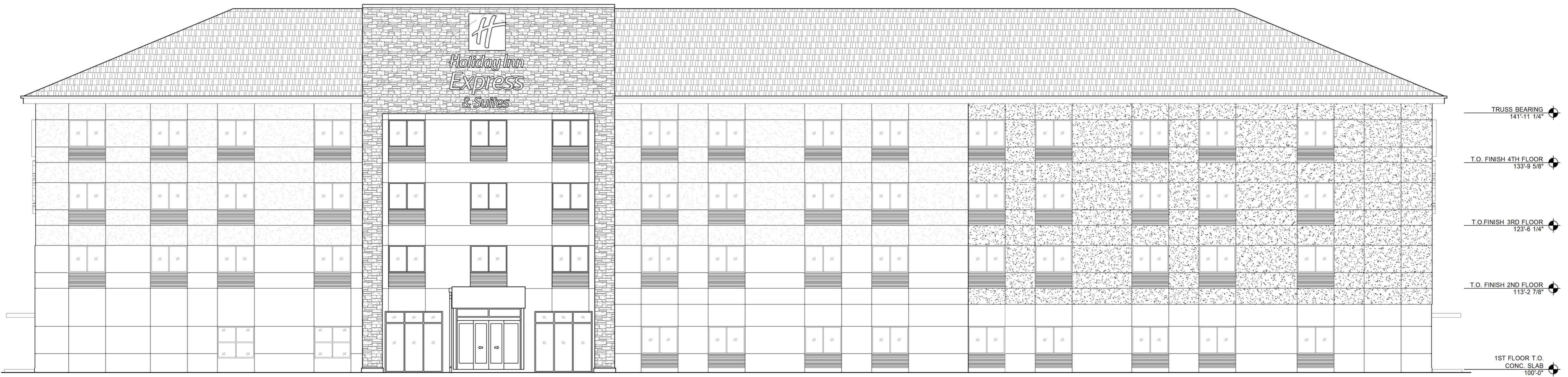
- EXTERIOR INSULATION FINISH SYSTEM (E.I.F.S.) TO HAVE A MIN. DEPTH OF 2" EXTERIOR FEATURES (COLUMNS, BANDS, ETC.) TO BE CREATED USING VARIOUS E.I.F.S. THICKNESS AND REVEALS.
- ALL E.I.F.S. EXPANSION JOINTS TO BE MIN. 3/4" THICK. REVEAL JOINTS TO BE MIN. 1/2" THICK.
- INSTALL ALL EXTERIOR FINISHES PER MANUFACTURER'S RECOMMENDATIONS AND REQUIREMENTS.
- PROVIDE CONTINUOUS FLASHING AT EVERY PENETRATION AND AS REQUIRED BY MANUF. E.I.F.S. COLORS AND FINISH TO BE PROTOTYPIC. VERIFY FINAL COLOR AND FINISH WITH FRANCHISE AND OWNER.
- ADHERED STONE TO BE INSTALLED PER MANUFACTURER'S RECOMMENDATIONS WITH EXP. JOINTS AS RECOMMENDED BY MANUFACTURER.

**HOLIDAY INN EXPRESS & SUITES**  
 99 Unit, 4 Story Hotel  
 Street Address  
 Rapid City, South Dakota

PLEASE BE ADVISED THAT THIS SET OF PLANS HAS BEEN PREPARED FOR BUILDING CODE AND PLAN REVIEW ONLY. THIS SET OF PLANS SHOULD BE CONSIDERED PRELIMINARY AND NOT FOR ANY BIDDING, FINAL ESTIMATE OR CONSTRUCTION. THIS SET OF PLANS SHALL NOT BE DEEMED FINAL UNTIL ALL APPROVALS HAVE BEEN OBTAINED FROM ALL CODE AUTHORITIES HAVING JURISDICTION. ANY BID SUBMITTED, BASED ON THIS SET OF PRELIMINARY PLANS, IS SUBJECT TO CHANGE AND IS INCOMPLETE.

LJA JOB #	16001
PROJ. DATE	1-04-2016
FILE NAME	16001_A200-A201
DWG. SCALE	AS NOTED
CHECKED BY:	JML
DRAWN BY:	JML

SHEET DESCRIPTION	EXTERIOR ELEVATIONS
-------------------	---------------------



**1 FRONT ELEVATION**  
 SCALE: 1/8" = 1'-0"



**2 LEFT ELEVATION**  
 SCALE: 1/8" = 1'-0"

**EXTERIOR MATERIALS LEGEND**

EXTERIOR WINDOWS:  
 KAWNEER ENCORE 4 1/2" X 1 3/4" FRAMING SYSTEM, ALTERNATE GUESTROOM WINDOWS QUAKER E300 SERIES PW WINDOWS.  
 COLOR: CLEAR ANODIZED ALUMINIUM EXTERIOR, INTERIOR AND SILL FLASHING.

EXTERIOR/INTERIOR STOREFRONT FRAMING AND ENTRANCE SWING DOORS:  
 KAWNEER ENCORE 6" X 1 3/4" FRAMING SYSTEM, INCLUDING 1" THICK INSULATED ALUMINIUM METAL PANEL SET INTO GLAZING POCKET AND SPANDRAL INSULATION.  
 COLOR: CLEAR ANODIZED ALUMINIUM EXTERIOR AND INTERIOR.

AUTOMATIC SLIDING ENTRANCE DOORS:  
 EXTERIOR: BESAM OVERHEAD CONCEALED SL500 WITH ECODOOR SEALS, MAGNETIC CATCHES AND EXTERIOR INSULATED CLEAR GLASS.  
 INTERIOR: BESAM OVERHEAD CONCEALED SL500 WITH INTERIOR CLEAR GLASS.  
 COLOR: CLEAR ANODIZED ALUMINIUM EXTERIOR AND INTERIOR.

GLAZING COMPONENTS:  
 EXTERIOR INSULATED CLEAR GLASS: GL-10 VIRACON VUE 1-50.  
 EXTERIOR INSULATED SPANDRAL GLASS: GL-10S VIRACON VUE1-50 WITH HIGH-OPACITY WHITE V175 CERAMIC FRIT.  
 INSULATED GLASS SPACERS: CLEAR ANODIZED ALUMINIUM.  
 INTERIOR CLEAR GLASS: GL-1 VIRACON CLEAR FLOAT GLASS.  
 (T) DENOTES TEMPERED SAFETY GLASS IS REQUIRED.

EPDM ROOF SYSTEM, CARLISLE'S BLACK EPDM 90 ml SURE SEAL, COMPLETE WITH TREATED WD BLDG, VAPOR BARRIER, ROOF INSULATION, WALKWAY PADS AND ROOF BOARDS.

EXTERIOR INSULATED HOLLOW METAL DOORS AND FRAMES:  
 EXTERIOR GRADE PAINT, CUSTOM COLOR TO MATCH PLAIN ALUMINIUM.

APC WALL BASE:  
 CUSTOM FABRICATED WALL BASE, NATURAL APC SMOOTH PITLESS SURFACE WITH CLEAR SEALER FINISH.  
 PROVIDE MITERED CORNERS AND ALIGN JOINTS WITH EIFS JOINTS.

GUESTROOM EXTERIOR GRILLS:  
 RUSKIN E1F15J THIN LINE STATIONARY LOUVER AND BLANK OFF BACKING PANELS.  
 COLOR: CLEAR ANODIZED ALUMINIUM.

STONE:  
 BORAL STONE PRODUCTS CULTURED STONE, PRO-FIT LEDGESTONE SOUTHWEST BLEND.

SH1 MTL-WH SHEET METAL GRAVEL STOP TYPE COPPING, SCUPPER AND DOWNSPOUT.  
 PAC-CLAD CUSTOM FABRICATED ROOF EDGE FLASHING AND FASCIA.  
 COLOR: BONE WHITE.

SH1 MTL-GR ELEVATOR OVERLUN GRAVEL STOP TYPE COPPING, SCUPPER AND DOWNSPOUT.  
 PAC-CLAD CUSTOM FABRICATED ROOF EDGE FLASHING AND FASCIA.  
 COLOR: SLATE GRAY.

EIFS NOTE: PROVIDE HIGH IMPACT SYSTEM WITHIN 6'-0" ABOVE GRADE.

EXTERIOR PATIO FENCE, 4'-0" HIGH FENCE AND 3'-0" GATE.  
 NATURES COMPOSITES TERRAFENCE WITH POSTS AT CORNERS, END AND EVENLY SPACED AT 5'-0" O.C.  
 VERTICAL PICKETS SPACED 1" APART ON 3" HORIZONTAL RAILS.  
 CONTEMPORARY SCHEME COLOR RAVENWOOD OR NATURAL SCHEME COLOR ASPEN GREY.

CONTEMPORARY EXTERIOR SCHEME

EIFS-LS, LIMESTONE/SANDSTONE.  
 PAREX TEXTURED, MULTI-TEXTURE SURFACE WITH PDR ACRYLIC FINISH.  
 EIFS-LS5, LIMESTONE/SANDSTONE.  
 PAREX SMOOTH SAND SMOOTH SURFACE WITH PDR ACRYLIC FINISH.  
 COLOR: PAREX MOONDANCE 3027L.

EIFS-DB, DARK BRONZE.  
 PAREX MEDIUM SAND FINE SURFACE WITH PDR ACRYLIC FINISH.  
 COLOR: PAREX T1W5 3027L.

EIFS-RR, RUSTIC RED.  
 PAREX SMOOTH SAND SMOOTH SURFACE WITH PDR ACRYLIC FINISH.  
 COLOR: PAREX RIVER ROCK 3043D.

EIFS-WH, WHITE.  
 PAREX SMOOTH SAND SMOOTH SURFACE WITH PDR ACRYLIC FINISH.  
 COLOR: PAREX SNOWBALL 10400L.

EIFS-GR, GREY.  
 PAREX SMOOTH SAND SMOOTH SURFACE WITH PDR ACRYLIC FINISH.  
 COLOR: PAREX BASALT 3015L.

NATURAL EXTERIOR SCHEME

EIFS-LS, LIMESTONE/SANDSTONE.  
 PAREX TEXTURED, MULTI-TEXTURE SURFACE WITH PDR ACRYLIC FINISH.  
 EIFS-LS5, LIMESTONE/SANDSTONE.  
 PAREX SMOOTH SAND SMOOTH SURFACE WITH PDR ACRYLIC FINISH.  
 COLOR: PAREX MOONDANCE 3027L.

EIFS-DB, DARK BRONZE.  
 PAREX MEDIUM SAND FINE SURFACE WITH PDR ACRYLIC FINISH.  
 COLOR: PAREX RAWHIDE T022L.

EIFS-RR, RUSTIC RED.  
 PAREX SMOOTH SAND SMOOTH SURFACE WITH PDR ACRYLIC FINISH.  
 COLOR: PAREX SANTIAGO 3032L.

EIFS-WH, WHITE.  
 PAREX SMOOTH SAND SMOOTH SURFACE WITH PDR ACRYLIC FINISH.  
 COLOR: PAREX SNOWBALL 10400L.

EIFS-GR, GREY.  
 PAREX SMOOTH SAND SMOOTH SURFACE WITH PDR ACRYLIC FINISH.  
 COLOR: PAREX BASALT 3015L.

SUN SHADE, RUSKIN RECTANGULAR TUBE BLADE SUNSHADE SSRTH, CLEAR ANODIZED ALUMINIUM FINISHED.

ROOF HATCH, JL INDUSTRIES RHG-2-STH ROOF ACCESS HATCH 30" x 54" WITH SAFETY RAILING.

ENTRANCE CANOPY: STANDING SEAM METAL ROOF.  
 PAC-CLAD SNAP CLAD 12" STANDING SEAM METAL ROOFING.  
 COLOR: METALLIC ZINC.

ENTRANCE CANOPY: CANOPY ROOF EDGE FLASHING AND FASCIA.  
 PAC-CLAD CUSTOM FABRICATED ROOF EDGE FLASHING AND FASCIA.  
 COLOR: DARK BRONZE.

ENTRANCE CANOPY: VENTED SOFFIT.  
 PAC-CLAD PAC-750 FULLY VENTED SOFFIT PANELS.  
 COLOR: DARK BRONZE.

ENTRANCE CANOPY: STEEL FRAME PAINT FINISHED.  
 EXTERIOR GRADE PAINT, CUSTOM COLOR TO MATCH PAC-CLAD COLOR: DARK BRONZE.  
 GRID ALL WELD SMOOTH PRIOR TO PAINT APPLICATION.

ENTRANCE CANOPY: LIN WD CLG. WOOD GRAIN PREFINISHED UNPERFORATED PANELS.  
 ARMSTRONG METALWORKS LINEAR EXTERIOR 5491 8" WOOD LOOK METAL CEILING.  
 COLOR: DARK CHERRY F002C.

STAMPED CONCRETE CANOPY AND PATIO.  
 CUSTOM SIZE STAMP 9' X 54' BASED ON BUTTERFIELD COLOR 18" X 36" BLUESTONE BST4210.  
 COLOR: SCOFIELD, LITHICHROME, COLOR 1139 Burbury Beige.

**GENERAL NOTES:**

- EXTERIOR INSULATION FINISH SYSTEM (EIFS) TO HAVE A MIN. DEPTH OF 2" EXTERIOR FEATURES (COLUMNS, BANDS, ETC.) TO BE CREATED USING VARIOUS EIFS THICKNESS AND REVEALS.
- ALL EIFS EXPANSION JOINTS TO BE MIN. 3/4" THICK REVEAL JOINTS TO BE MIN. 1/2" THICK.
- INSTALL ALL EXTERIOR FINISHES PER MANUFACTURER'S RECOMMENDATIONS AND REQUIREMENTS.
- PROVIDE CONTINUOUS FLASHING AT EVERY PENETRATION AND AS REQUIRED BY MANUF.
- EIFS COLORS AND FINISH TO BE PROTOTYPIC. VERIFY FINAL COLOR AND FINISH WITH FRANCHISE AND OWNER.
- ADHERED STONE TO BE INSTALLED PER MANUFACTURER'S RECOMMENDATIONS WITH EXP. JOINTS AS RECOMMENDED BY MANUFACTURER.

REVISIONS

**HOLIDAY INN EXPRESS & SUITES**  
 99 Unit, 4 Story Hotel  
 Street Address  
 Rapid City, South Dakota

PLEASE BE ADVISED THAT THIS SET OF PLANS HAS BEEN PREPARED FOR BUILDING CODE AND PLAN REVIEW ONLY. THIS SET OF PLANS SHOULD BE CONSIDERED PRELIMINARY AND NOT FOR ANY BIDDING, FINAL ESTIMATE OR CONSTRUCTION. THIS SET OF PLANS SHALL NOT BE DEEMED FINAL UNTIL ALL APPROVALS HAVE BEEN OBTAINED FROM ALL CODE AUTHORITIES HAVING JURISDICTION. ANY BID SUBMITTED BASED ON THIS SET OF PRELIMINARY PLANS, IS SUBJECT TO CHANGE AND IS INCOMPLETE.

LJA JOB #	16001
PROJ. DATE	1-04-2016
FILE NAME	16001_A200-A201
DWG. SCALE	AS NOTED
CHECKED BY:	JUL
DRAWN BY:	JUL

SHEET DESCRIPTION
EXTERIOR ELEVATIONS

**A200**