

RYAN A. SCHROEDER
ARCHITECT

433 West 95th Street
Suite 200
St. Louis Park, Minnesota
952.541.8867

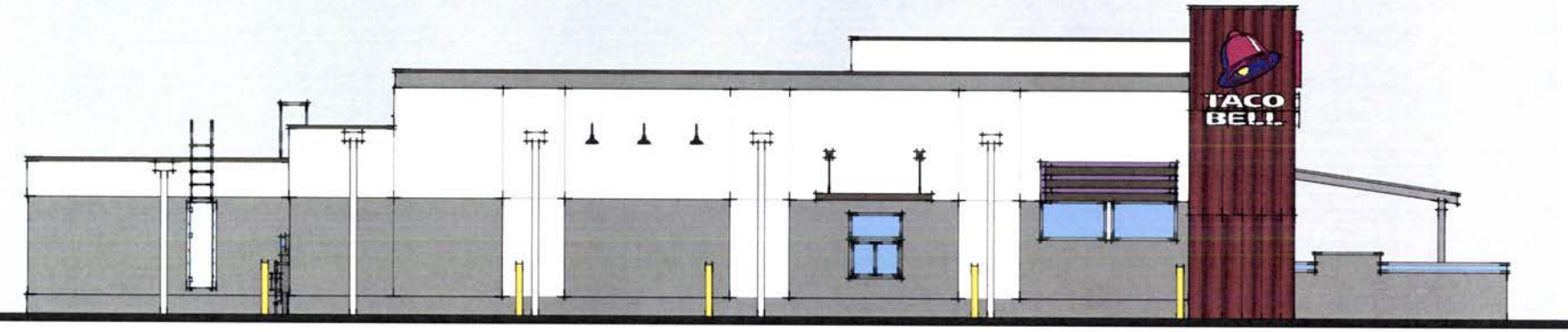
TACO BELL

E. STUMER ROAD
AND SHELBY AVE
RAPID, CITY
SOUTH DAKOTA

PRELIMINARY
NOT FOR
CONSTRUCTION



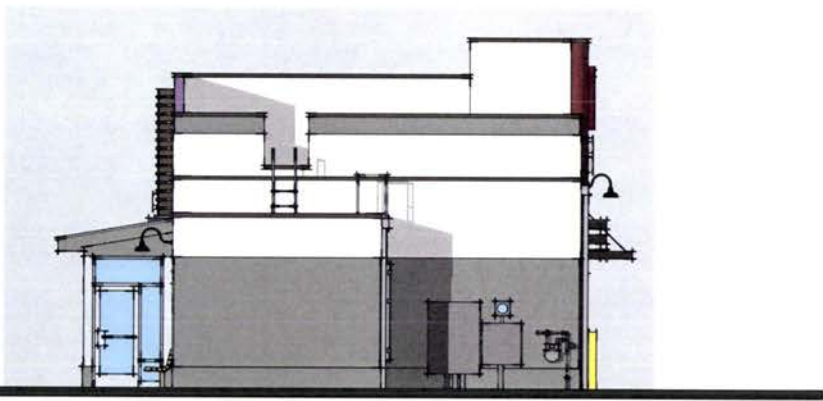
1 MAIN ENTRY ELEVATION
1/4" = 1'-0"



2 DRIVE THRU ELEVATION
1/4" = 1'-0"



3 FRONT ELEVATION
1/4" = 1'-0"



3 REAR ELEVATION
1/4" = 1'-0"

I hereby certify the first part was prepared by me or under my direct supervision and that I am a duly licensed architect under the laws of the State of South Dakota.

DATE: 12.22.11	BY: RYAN A. SCHROEDER
REGISTRATION: 12.22.11	
PROJECT HISTORY:	DATE:
DEVELOPMENT REVIEW:	DATE:

BUILDING ELEVATIONS

PROJECT: 15110
DRAWING: 200
CHECKED: RJS