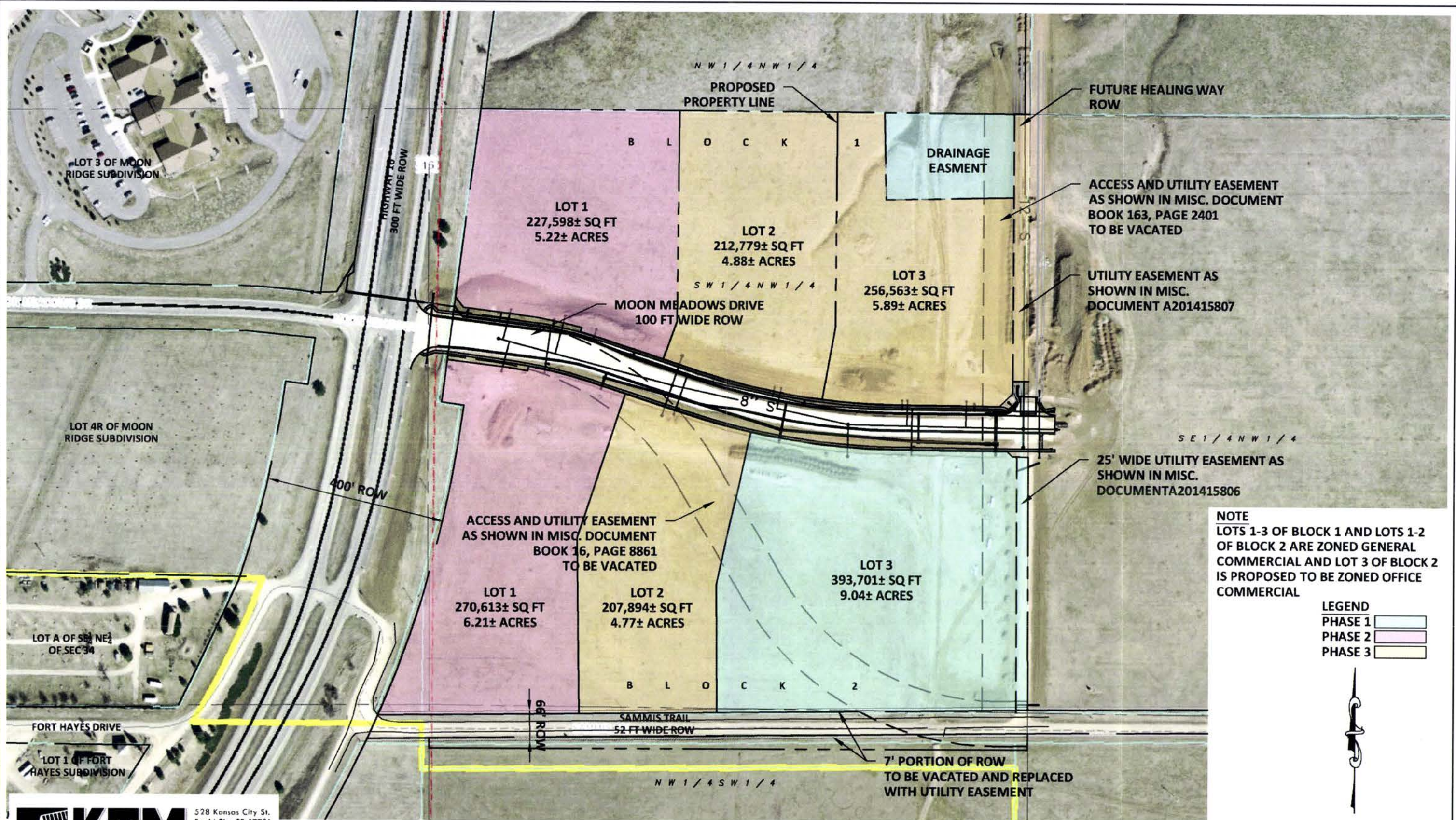


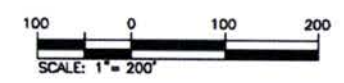
x:\750-799\759 Moon Meadows Apartments Drawings\Drawings\SHEETS\Preliminary Subdivision Plan\Master & Phasing Plan.dwg 2/15/2016 7:13am



**NOTE**  
 LOTS 1-3 OF BLOCK 1 AND LOTS 1-2 OF BLOCK 2 ARE ZONED GENERAL COMMERCIAL AND LOT 3 OF BLOCK 2 IS PROPOSED TO BE ZONED OFFICE COMMERCIAL

**LEGEND**

PHASE 1	
PHASE 2	
PHASE 3	



**PRELIMINARY FOR REVIEW ONLY**

**KTM** DESIGN SOLUTIONS, INC.  
 528 Kansas City St.  
 Rapid City, SD 57701  
 [P] (605) 348-0538  
 [F] (605) 348-0545  
 www.ktmsi.com

CIVIL ENGINEERING | LAND PLANNING  
 CONSTRUCTION ADMINISTRATION

**RECEIVED**  
 FEB 15 2016

**MOON MEADOWS  
 MASTER AND PHASING PLAN**  
 RAPID CITY, SOUTH DAKOTA  
 FEBRUARY 12, 2016