

**PRELIMINARY
FOR REVIEW ONLY**

LEGAL:
FUTURE TRACT D BUFFALO CROSSING SUBDIVISION
SECTION 26, T1N, R7E, BHM
RAPID CITY, PENNINGTON COUNTY, SOUTH DAKOTA

AREA:
2.36 ACRES +/-
102,957 SQ FT

ZONING
PERMITTED USE: HOTELS

GENERAL COMMERCIAL
MINIMUM SETBACKS:
FRONT = 25'
SIDE = 0'
REAR = 0'

MAXIMUM LOT COVERAGE: 75%
PROJECTED LOT COVERAGE 14.8%
FIRST FLOOR AREA 15,234 SF

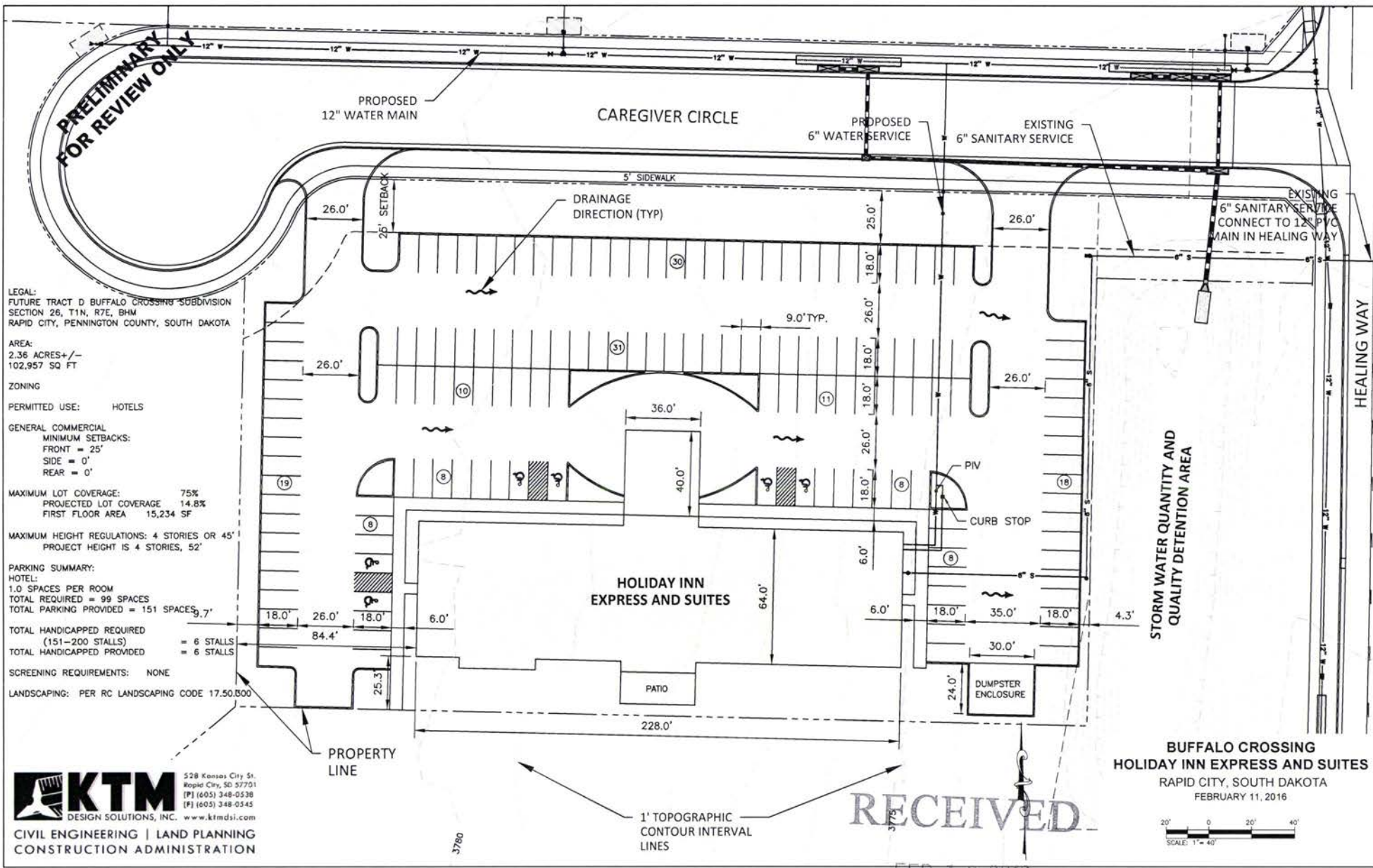
MAXIMUM HEIGHT REGULATIONS: 4 STORIES OR 45'
PROJECT HEIGHT IS 4 STORIES, 52'

PARKING SUMMARY:
HOTEL:
1.0 SPACES PER ROOM
TOTAL REQUIRED = 99 SPACES
TOTAL PARKING PROVIDED = 151 SPACES
TOTAL HANDICAPPED REQUIRED (151-200 STALLS) = 6 STALLS
TOTAL HANDICAPPED PROVIDED = 6 STALLS

SCREENING REQUIREMENTS: NONE
LANDSCAPING: PER RC LANDSCAPING CODE 17.50.000

KTM DESIGN SOLUTIONS, INC. www.ktmdsi.com
528 Kansas City St.
Rapid City, SD 57701
(605) 348-0538
(605) 348-0545

CIVIL ENGINEERING | LAND PLANNING
CONSTRUCTION ADMINISTRATION



3780

1' TOPOGRAPHIC
CONTOUR INTERVAL
LINES

RECEIVED

FEB 12 2016

SCALE: 1" = 40'

**BUFFALO CROSSING
HOLIDAY INN EXPRESS AND SUITES**
RAPID CITY, SOUTH DAKOTA
FEBRUARY 11, 2016

**RAPID CITY COMMUNITY PLANNING
& DEVELOPMENT SERVICES**