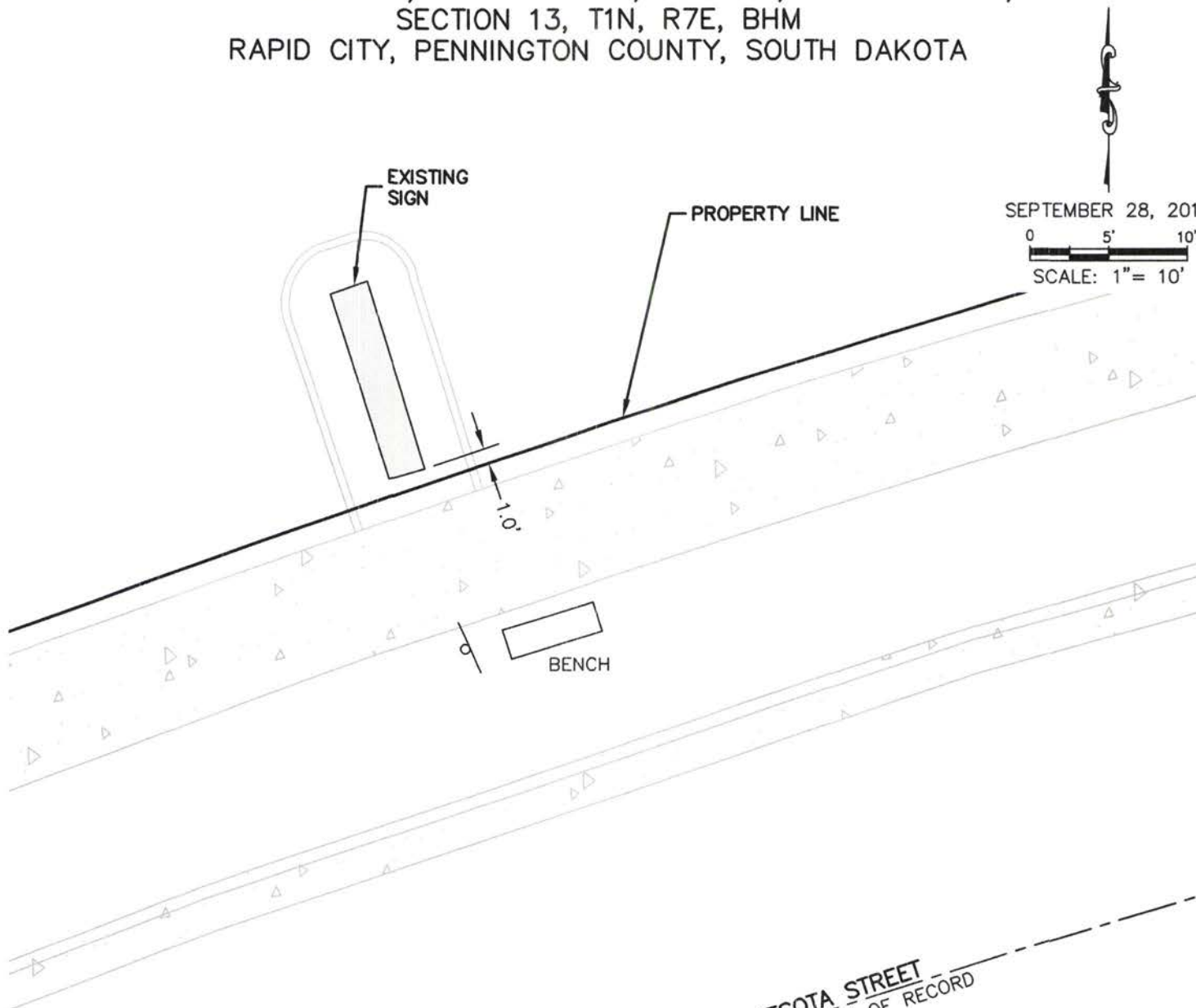


EXHIBIT 'A'  
**SIGN LOCATION**  
**LOT 4 OF BLOCK 24 OF**  
**ROBBINSDALE ADDITION NO. 10**

LOCATED IN THE NE1/4 OF THE SE1/4 & SE1/4 OF THE NE1/4 OF  
SECTION 13, T1N, R7E, BHM  
RAPID CITY, PENNINGTON COUNTY, SOUTH DAKOTA



RECEIVED

JAN 21 2016

Rapid City Community Planning  
& Development Services



**RENNER ASSOCIATES, LLC**  
CIVIL ENGINEERING • LAND SURVEYING

616 SIXTH STREET PH: 605. 721-7310  
RENNERASSOC.COM RAPID CITY, SD 57701 FX: 605. 721-7313