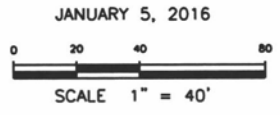
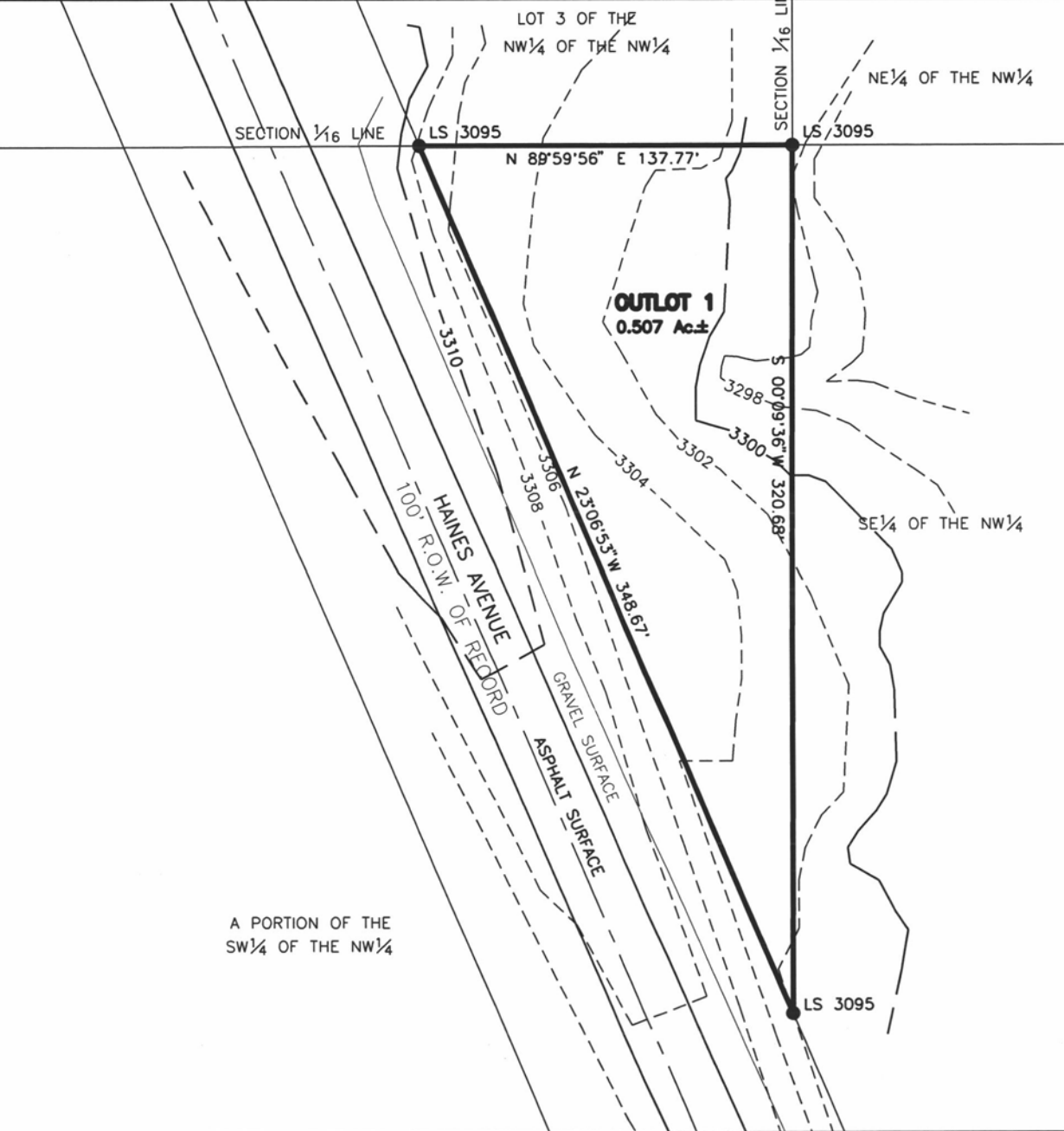


JAN 08 2016

RECEIVED

A PORTION OF THE
SW 1/4 OF THE NW 1/4



NOTE:
CONTOURS AS SCALED FROM
USGS NOT FIELD VERIFIED

SPERLICH
Consulting, Inc.
821 Columbus St., Suite 1 Rapid City, SD 57701
TEL: (605) 340-4400 FAX: (605) 721-4046
www.sperllich.com
Engineering, Surveying, Planning

PRELIMINARY

DATE	REVISIONS	BY	VISION

LEGAL DESCRIPTION:
SURVEYED MAP
OUTLOT 1 OF AUBURN HILLS SUBDIVISION
DRAWN BY: SEI
PROJECT NO: 16PL003
SHEET 1/1