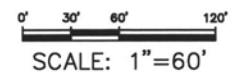
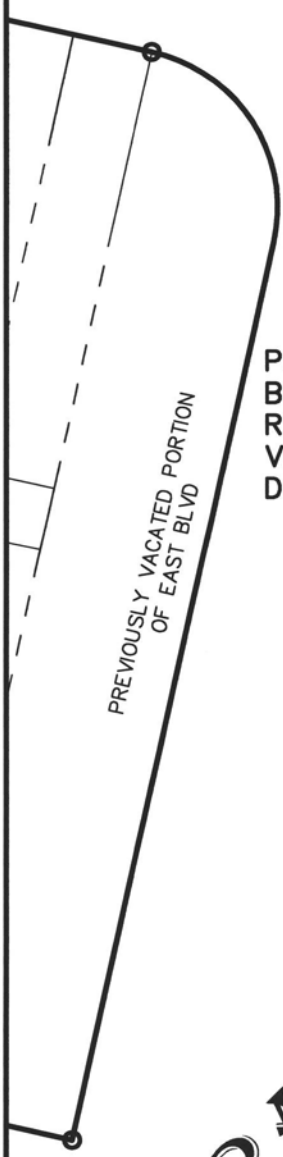


DEC 22 2015

Rapid City Community Planning & Development Services



100' EAST OMAHA STREET



PORTION OF EAST BOULEVARD RIGHT-OF-WAY TO BE VACATED THIS DOCUMENT

$\Delta = 66^{\circ}22'02''$   
 $R = 50.00'$   
 $L = 57.92'$

S77°25'30"E  
10.00'

10.00'  
N12°34'30"E

N89°56'17"E

N12°34'30"E 96.92'  
N12°34'30"E 94.68'  
PREVIOUSLY VACATED PORTION OF EAST BLVD  
MISC. BOOK 48, PAGE 772B.  
143.77'

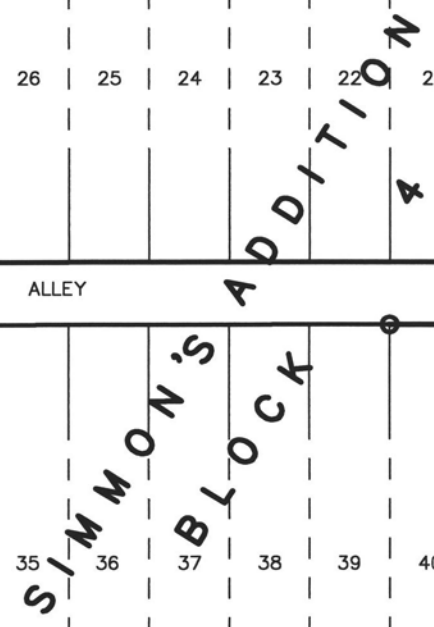
S89°56'17"W  
10.25'

S89°56'17"W

ALLEY

EAST BOULEVARD  
VARIABLE WIDTH RIGHT-OF-WAY  
OF RECORD

PREVIOUSLY VACATED PORTION OF EAST BLVD  
30'



EAST RAPID STREET

DRAFT

**EAST BOULEVARD RIGHT-OF-WAY VACATION**  
PORTION OF THE RIGHT-OF-WAY OF EAST BOULEVARD ADJACENT TO A PREVIOUSLY VACATED 30' WIDE STRIP ADJACENT TO LOT 29 OF BLOCK 4, SIMMONS ADDITION, LOCATED IN THE NE1/4 NE1/4, SECTION 1, T1N, R7E, B.H.M., RAPID CITY, PENNINGTON COUNTY, SOUTH DAKOTA

Surveyed By: BL  
Date: JUNE 2015  
Drawn By: BL  
Checked By: DW  
Location: NE1/4 SEC. 1, T1N, R7E, B.H.M.



**F M G, Inc.**  
3700 Sturgis Road  
Rapid City, SD 57702-0317  
(605) 342-4105 FAX (605) 342-4222  
www.fmgengineering.com