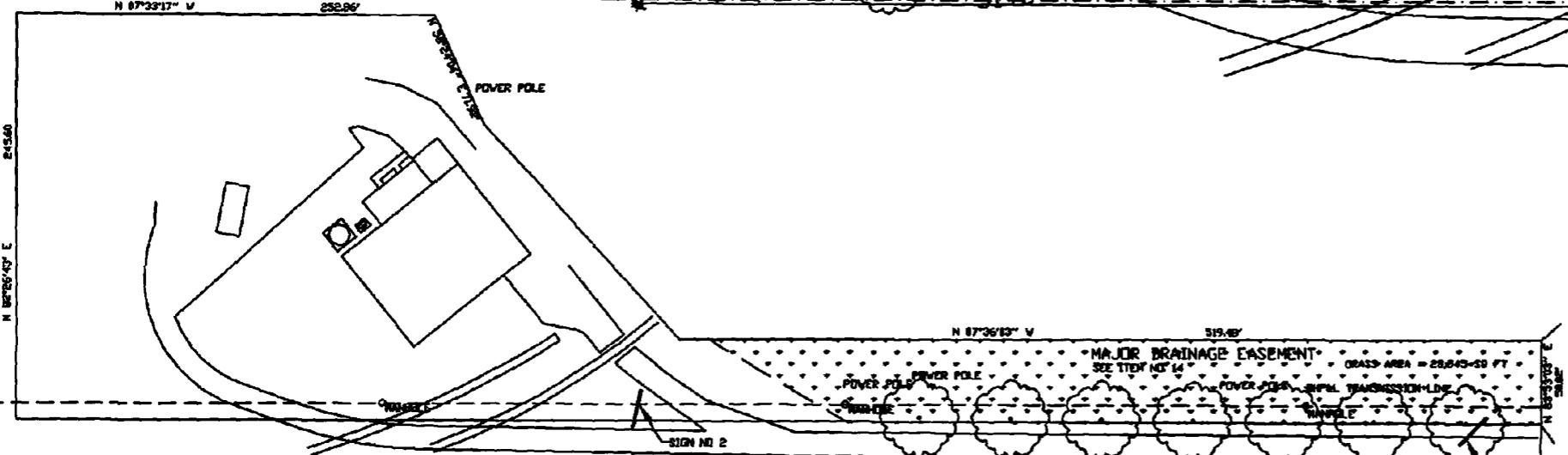


AUGUST 8, 2014
SCALE: 1" = 20'



LOT DIMENSIONS PER PLAT IN BOOK 28 PAGE 88 AT THE PENNINGTON COUNTY REGISTER OF DEEDS.

PROPOSED LANDSCAPE PLANNING
 LOT AREA = 2.48 ACRES = 108,000 SQ FT
 EXISTING BUILDING FOOTPRINT = 4700 SQ FT
 PROPOSED BUILDING FOOTPRINT = 4600 SQ FT
 EXISTING CONTAINMENT AREA = 4297 SQ FT
 PROPOSED STORAGE TANK = 3980 SQ FT
 CONCRETE PADS = 3364 SQ FT
 CONCRETE APPROACH = 4790 SQ FT
 METHANE TANK BASE = 439 SQ FT
 TOTAL STRUCTURAL AREA = 28563 SQ FT
 LAND SCAPING POINTS REQUIRED = 87,439
 POINTS PROPOSED = 87,688
 LARGE TREES 18 @ 800PTS EACH = 14,400 POINTS
 SHRUBS 4 @ 250PTS EACH = 1,000 POINTS
 GRASS AREA 43545 SQ FT / 9 = 5859 SQ YDS
 GRASS AREA 5860 SQ YDS @ 10 PTS/SQ YD = 58,600 POINTS

RECEIVED

NOV 17 2015

Rapid City Community Planning
& Development Services



DAVIS ENGINEERING, INC.
 1080 KINGS ROAD, RAPID CITY, SOUTH DAKOTA, 57702
 PHONE (605) 341-3095

KUGLER COMPANY MAJOR AMENDMENT TO CUP
 LOT 1 OF DB WESTERN SUBDIVISION, SECTION 17, T14N, R96E, S14M,
 RAPID CITY, PENNINGTON COUNTY, SOUTH DAKOTA

Surveyed by: GEM	Date:	Reviewed by: THOMAS BRY	SHEET 1 OF 1
Designed by: GEM	Date:	Marked:	
Checked by: GEM	Date:	Job Number: 0990-03	
Drawn by: GEM	Date:		