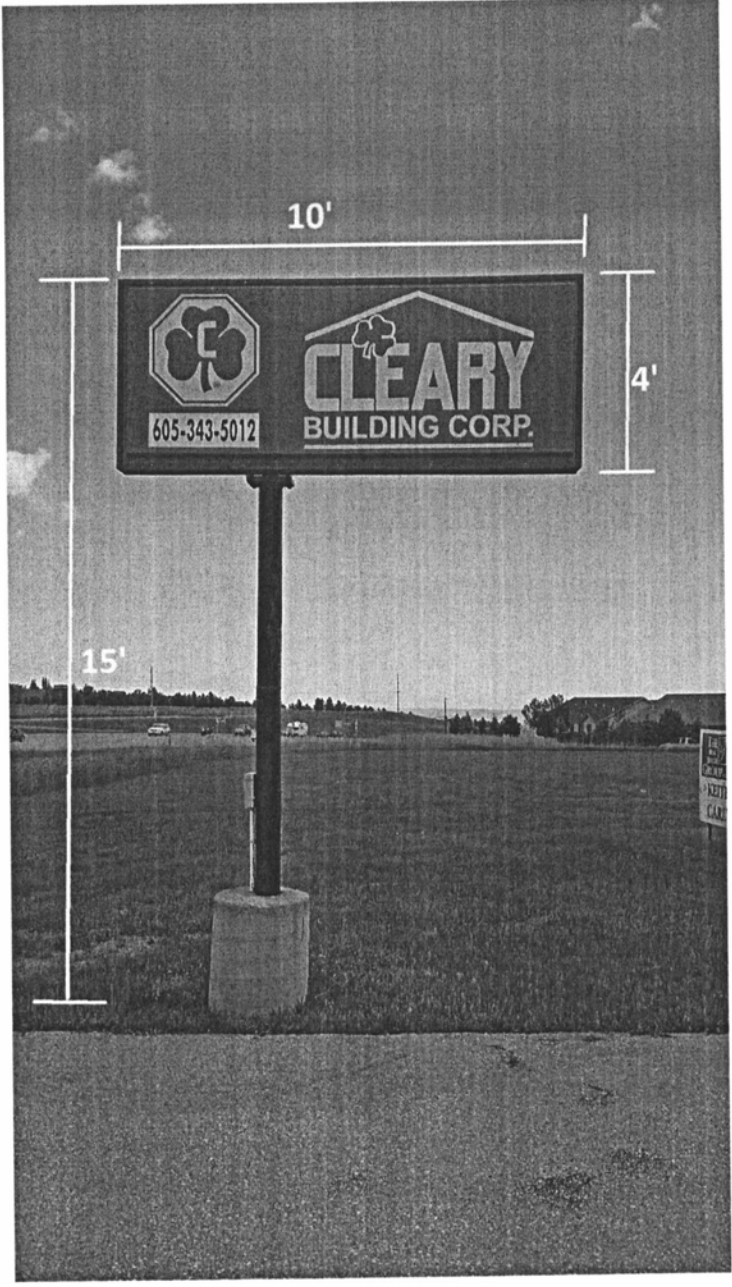


Sign Plan 1555 Catron Boulevard, Rapid City SD

Sign #1



Illuminated Cleary Building Corporation pole sign

Height from ground to top of sign – 15'

Dimensions of sign 10' wide, 4' tall

Sign Materials – Steel pole, steel and translucent plastic sign

RECEIVED

DEC 11 2015

Rapid City Community Planning
& Development Services

Sign #3



Temporary Business Sign

Sign Dimensions 8' wide, 4' tall

Top of sign is approximately 4' above ground level

Sign material - Plywood

Sign is painted and contains vinyl lettering and graphics

Sign is supported by 2 steel "T" posts

RECEIVED

DEC 11 2015

Rapid City Community Planning
& Development Services