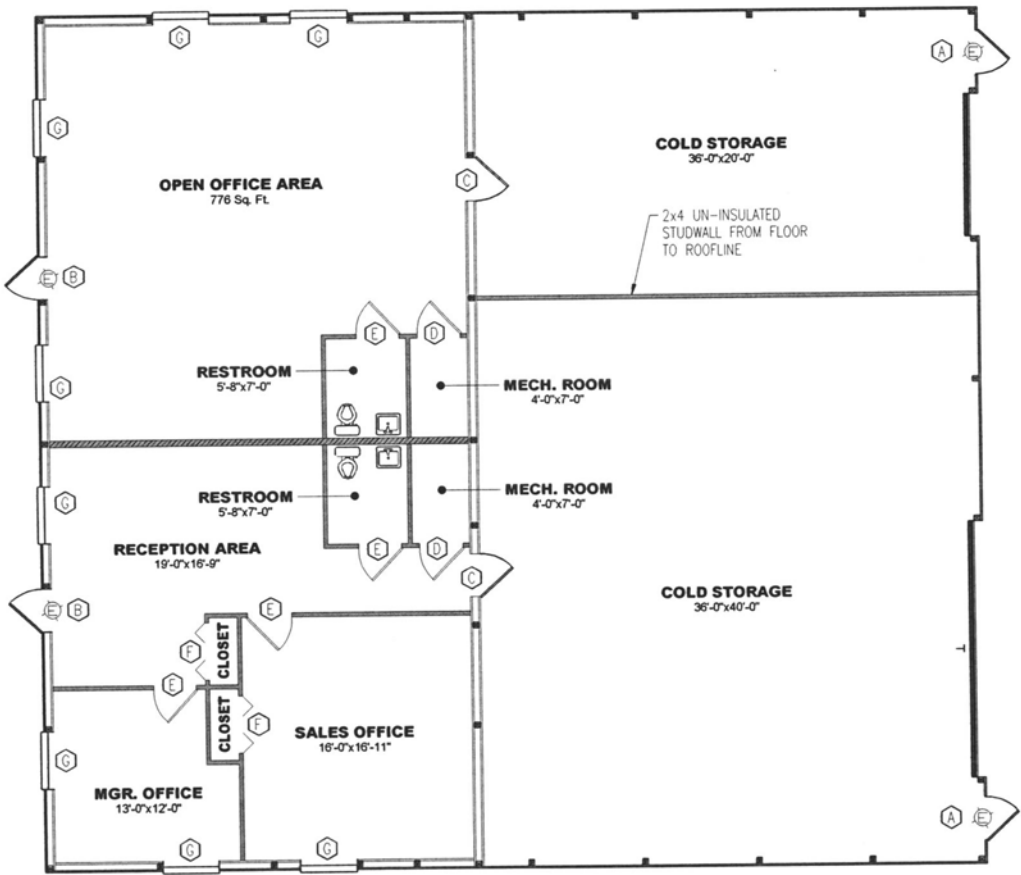


NORTH



DRAWN BY: T. KALDENBERG
DATE DRAWN: 7/29/2015

PLAN REVISIONS:		
NUMBER	DATE	BY
1		
2		
3		
4		



ROOM FINISH SCHEDULE

ROOM	WALLS	CEILING	TRIM	FLOORING
SALES OFFICE	5/8" GYP. BOARD	5/8" GYP. BOARD	OAK	CARPET
MANAGERS OFFICE	5/8" GYP. BOARD	5/8" GYP. BOARD	OAK	CARPET
RECEPTION	5/8" GYP. BOARD	5/8" GYP. BOARD	OAK	CARPET
RESTROOM	5/8" GYP. BOARD	5/8" GYP. BOARD	4" VINYL	CERAMIC TILE
MECHANICAL	5/8" GYP. BOARD	5/8" GYP. BOARD	---	CONCRETE
COLD STORAGE	---	---	---	CONCRETE

DOOR and WINDOW SCHEDULE

CODE	DESCRIPTION	QTY.
A	3'x6"-8" AJ-T5000 SOLID WALK DOOR WITH LEVER/LEVER LOCKSET B.E.=100'+0"	2
B	3'x7" RECESSED DOOR FRAME-OUT WITH 2x6 FRAME B.E.=100'+0"	2
C	3'x6"-8" SOLID 2-HOUR FIREDOOR WITH 2x6 FRAME B.E.=100'+0"	2
D	2'-8"x6"-8" OAK HOLLOW CORE WALK DOOR WITH KEYED LOCKSET	2
E	3'x6"-8" OAK HOLLOW CORE WALK DOOR WITH KEYED LOCKSET	4
F	4'x6"-8" OAK HOLLOW CORE BI-FOLD CLOSET DOOR	2
G	404 PLYCO COMM. HORIZ. SLIDE WINDOWS WITH 2x6 FRAME B.E.=103'+0"	8

RECEIVED

DEC 11 2015

Rapid City Community Planning & Development Services

PROJECT NAME: CT INVESTMENTS
PROJECT SITE ADDRESS: 1555-A CATRON BOULEVARD RAPID CITY, SD
BUILDING SIZE: 60'x36'x13'-8" / 60'x30'x9'-10"
SHEET NAME: INTERIOR ROOM LAYOUT PLAN

PROJECT NUMBER: 000000000
SHEET NUMBER: 3 OF 3
SHEET SCALE: 1/4" = 1'-0"

