

PROPOSED LANDSCAPE PLAN
FOR FUTURE LOT 4 & LOT 5

1" = 30'-0"

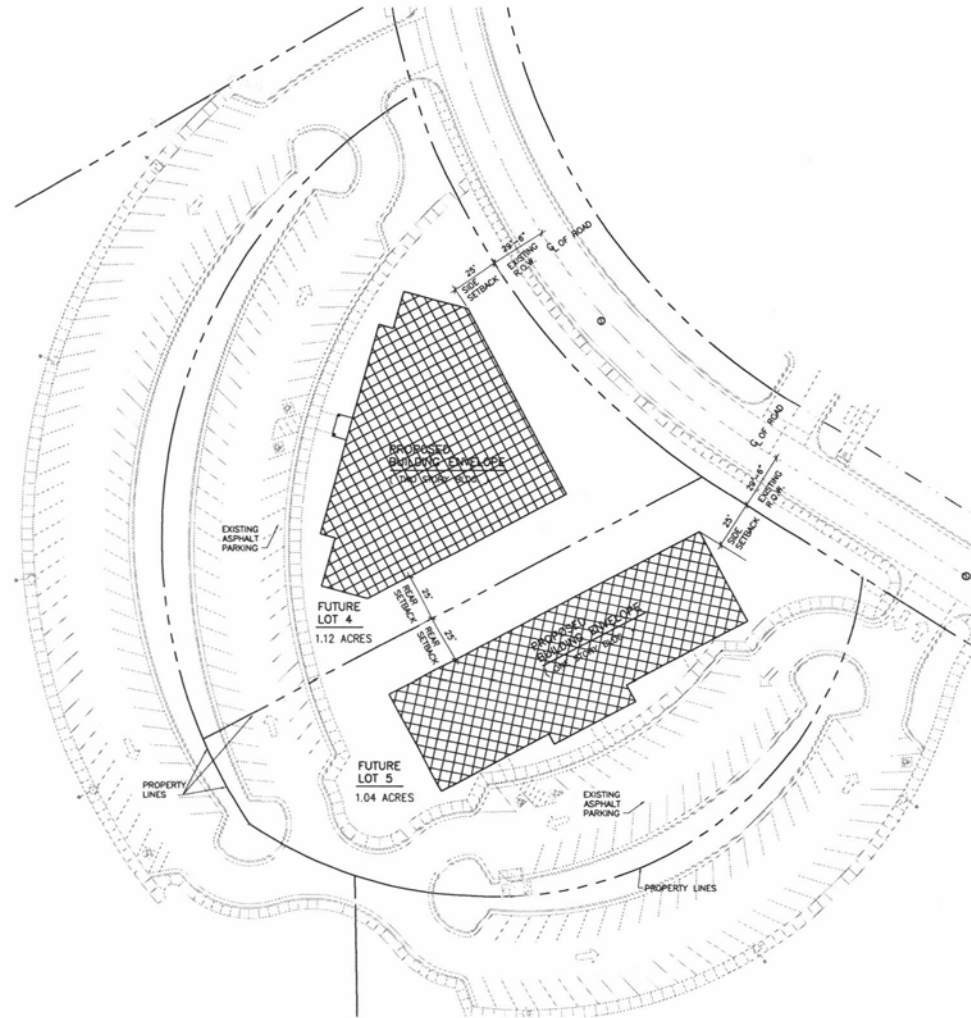


LANDSCAPE MATERIAL POINTS: LOT-4

| | |
|--|--------------|
| TOTAL AREA OF LOT 4 - 1.12 ACRES - (SQ. FT.) | = 48,818.0 |
| TOTAL AREA OF PROPOSED BUILDING COVERAGE | = 12,318.0 ± |
| TOTAL LANDSCAPE MATERIAL POINTS REQUIRED | = 36,500.0 |
| 14 LARGE TREES @ 2,000 PTS/EA. | = 28,000.0 |
| 15 SHRUBS @ 250 PTS/EA. | = 3,750.0 |
| SOD 2,400.0 YARDS @ 10 PTS/YD | = 24,000.0 |
| TOTAL LANDSCAPE MATERIAL POINTS PROVIDED | = 55,750.0 |

LANDSCAPE MATERIAL POINTS: LOT-5

| | |
|--|-------------|
| TOTAL AREA OF LOT 5 - 1.04 ACRES - (SQ. FT.) | = 45,241.0 |
| TOTAL AREA OF PROPOSED BUILDING COVERAGE | = 7,000.0 ± |
| TOTAL LANDSCAPE MATERIAL POINTS REQUIRED | = 38,241.0 |
| 12 LARGE TREES @ 2,000 PTS/EA. | = 24,000.0 |
| 24 SHRUBS @ 250 PTS/EA. | = 6,000.0 |
| SOD 1,770.0 YARDS @ 10 PTS/YD | = 17,700.0 |
| TOTAL LANDSCAPE MATERIAL POINTS PROVIDED | = 47,700.0 |



PROPOSED SITE PLAN
FOR FUTURE LOT 4 & LOT 5

1" = 30'-0"



RECEIVED

NOV 13 2015

Rapid City Community Planning
& Development Services

FOUNDERS PARK

RAPID CITY, SD.
DATE: SEPT 21, 2015
REVISED: OCT 1, 2015
REVISED: OCT 20, 2015
REVISED: NOV 2, 2015