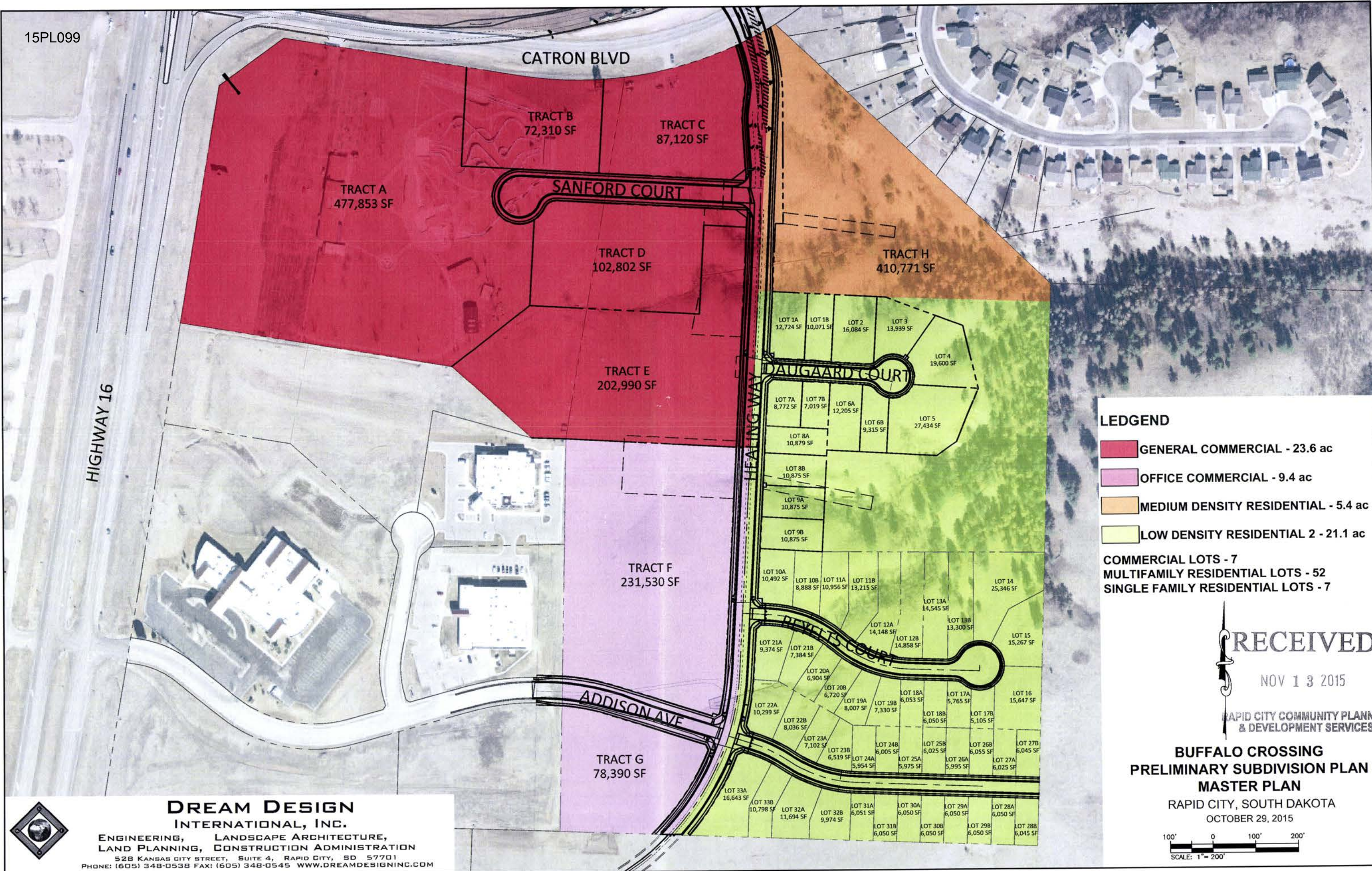


15PL099



- LEDGEND**
- GENERAL COMMERCIAL - 23.6 ac
  - OFFICE COMMERCIAL - 9.4 ac
  - MEDIUM DENSITY RESIDENTIAL - 5.4 ac
  - LOW DENSITY RESIDENTIAL 2 - 21.1 ac

COMMERCIAL LOTS - 7  
 MULTIFAMILY RESIDENTIAL LOTS - 52  
 SINGLE FAMILY RESIDENTIAL LOTS - 7

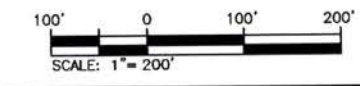
**RECEIVED**

NOV 13 2015

RAPID CITY COMMUNITY PLANNING  
& DEVELOPMENT SERVICES

**BUFFALO CROSSING  
PRELIMINARY SUBDIVISION PLAN  
MASTER PLAN**

RAPID CITY, SOUTH DAKOTA  
OCTOBER 29, 2015



**DREAM DESIGN INTERNATIONAL, INC.**  
 ENGINEERING, LANDSCAPE ARCHITECTURE,  
 LAND PLANNING, CONSTRUCTION ADMINISTRATION  
 528 KANSAS CITY STREET, SUITE 4, RAPID CITY, SD 57701  
 PHONE: (605) 348-0538 FAX: (605) 348-0545 WWW.DREAMDESIGNINC.COM