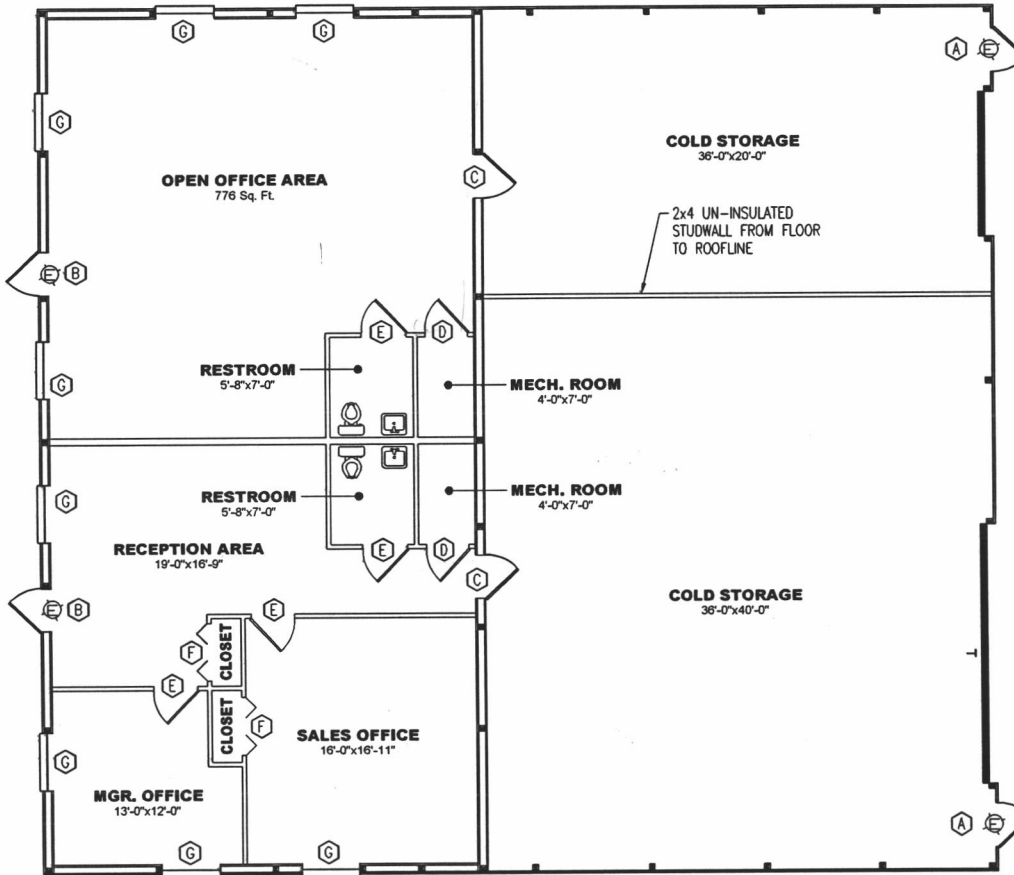


15PD035

NORTH
TO BE SET
BY OWNER



ROOM FINISH SCHEDULE

ROOM	WALLS	CEILING	TRIM	FLOORING
SALES OFFICE	5/8" GYP. BOARD	5/8" GYP. BOARD	OAK	CARPET
MANAGERS OFFICE	5/8" GYP. BOARD	5/8" GYP. BOARD	OAK	CARPET
RECEPTION	5/8" GYP. BOARD	5/8" GYP. BOARD	OAK	CARPET
RESTROOM	5/8" GYP. BOARD	5/8" GYP. BOARD	4" VINYL	CERAMIC TILE
MECHANICAL	5/8" GYP. BOARD	5/8" GYP. BOARD	---	CONCRETE
COLD STORAGE	---	---	---	CONCRETE

DOOR and WINDOW SCHEDULE

CODE	DESCRIPTION	QTY
A	3'x6'-8" AJ-T5000 SOLID WALK DOOR WITH LEVER/LEVER LOCKSET B.E.=100'+0"	2
B	3'x7" RECESSED DOOR FRAME-OUT WITH 2x6 FRAME B.E.=100'+0"	2
C	3'x6'-8" SOLID 2-HOUR FIREDOOR WITH 2x6 FRAME B.E.=100'+0"	2
D	2'-8" x 6'-8" OAK HOLLOW CORE WALK DOOR WITH KEYPED LOCKSET	2
E	3'x6'-8" OAK HOLLOW CORE WALK DOOR WITH KEYPED LOCKSET	4
F	4'x6'-8" OAK HOLLOW CORE BI-FOLD CLOSET DOOR	2
G	4040 PLYCO COMM. HORIZ. SLIDE WINDOWS WITH 2x6 FRAME B.E.=103'+0"	8

DATE:	5-18-98
SCALE:	NONE
DRAWN BY:	T. KALDENBERG

REVISIONS	BY	TCK
NO.	DATE	
1	8-5-98	
2		
3		

CT INVESTMENTS (RAPID CITY OFFICE)
60'x36'x13'-8" WITH 60'x30'x9'-10" ENERGY MISER
INTERIOR ROOM LAYOUT PLAN

RECEIVED

AUG 28 2015

RAPID CITY COMMUNITY PLANNING & DEVELOPMENT SERVICES

JOB NO.
2254-98

CLEARY
BUILDING CORP.
HIGHWAY 69 SOUTH
P.O. BOX 930220
VERONA, WI
53593-0220

SHEET
2 OF 2