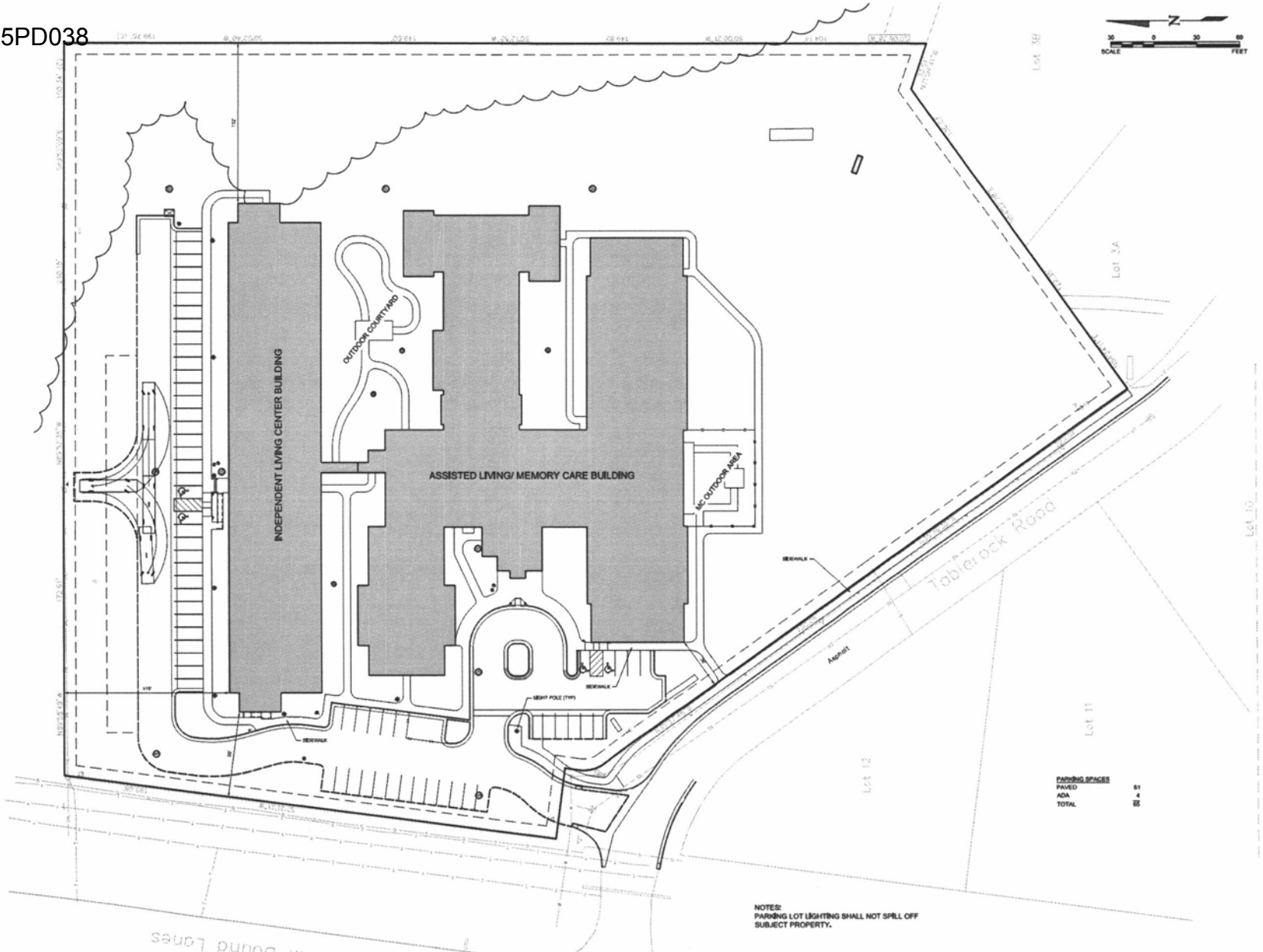
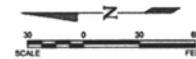


15PD038



4000 GARDEN VIEW DRIVE
SUITE 101
GRAND FORKS, ND 58201
P: 701.773.4244 • F: 701.773.4275
WWW.ICONARCHITECT.COM

STRUCTURAL
ICON Architectural Group
4000 Garden View Drive Suite 101
Grand Forks, ND 58201
(701) 773-4244 Office
(701) 773-4275 Fax

MECHANICAL
LWS Engineers, Inc.
207 East Center Street Suite 301
Bismarck, ND 58504
(701) 725-2124 Office
(701) 725-2185 Fax

ELECTRICAL
JH Electrical Design, P.C.
1118 14th Street NE
Bismarck, ND 58503
(701) 455-9555 Office

CIVIL
KLJ
334 Redwood Drive
Rapid City, SD 57701
(605) 771-6555 Office

FOODSERVICE
Culbert
311 4th Ave S
Sioux Falls, SD 57107
(605) 339-2277 Office

Rapid City Senior Living Community
Table Rock Road
Rapid City, South Dakota 57701

Drawing History

No.	Description	Date
1	Revisions to Original	08/25/15
2	Construction	09/11/15

DESIGN BY: KLJ
DATE: 08/25/15



OVERALL SITE PLAN
PROJECT
C010

NOTES:
PARKING LOT LIGHTING SHALL NOT SPILL OFF
SUBJECT PROPERTY.

PARKING SPACES

PAVED	61
ADA	4
TOTAL	65

15PD038



ICON
ARCHITECTURAL GROUP

4000 GARCKEN VIEW DRIVE
SUITE 101
GRAND FORKS, ND 58201
P: 701.772.4200 FAX: 701.772.4275
www.iconarchitect.com

STRUCTURAL
8504 ARCHITECTURAL DRIVE
4800 GARCKEN VIEW DRIVE SUITE 101
GRAND FORKS, ND 58201
(701) 772-4200 OFFICE
(701) 772-4275 FAX

MECHANICAL
LAPP ENGINEERS, INC.
807 EAST CARVER STREET SUITE 101
FARGO, ND 58104
(701) 735-8288 OFFICE
(701) 735-4188 FAX

ELECTRICAL
J&B ELECTRICAL DESIGN, P.C.
1418 1488 LANE NW
ANDOVER, MN 55305
(763) 466-0000 OFFICE

CIVIL
H&J
330 KNEELAND DRIVE
RAPID CITY, SD 57701
(605) 725-0000 OFFICE

FOODSERVICE
Culbren
311 4th Ave S
Bismarck, ND 58107
(701) 254-6577 OFFICE

Rapid City Senior Living Community
Tablerock Road
Rapid City, South Dakota 57701

Drawing History

No.	Description	Date
1	REVISED	03/12/20

BRADEN BRY SHUC. H&J 2018/10/20



SITE PLAN
C017



PARKING SPACES

PAVED	61
ADA	4
TOTAL	65

NOTES:
1. CONTRACTOR IS RESPONSIBLE FOR CONSTRUCTING ADA RAMPS, STAIRS, LANDINGS AND HANDRAIL TO CURRENT ADA GUIDELINES.

- ① ASPHALT PAVEMENT - SEE DETAIL 4C007
- ② SIDEWALK - SEE DETAIL 6-10
- ③ SIDEWALK, REINFORCED - SEE DETAIL 6-10
- ④ SIDEWALK, HEADER CURB - SEE DETAIL 8C007
- ⑤ ADA RAMP, NO WARNING PANELS - SEE SHEET 15C007
- ⑥ ADA RAMP, NO WARNING PANELS - SEE DETAIL 6-10
- ⑦ CURB & GUTTER, TYPE B - SEE DETAIL 6-10
- ⑧ CURB & GUTTER, TYPE BL - SEE DETAIL 6-10
- ⑨ CURB TRANSITION - SEE DETAIL 8C007
- ⑩ CURB CUT - SEE DETAIL 8C007
- ⑪ 4" DRAIN PAN - SEE DETAIL 7C007
- ⑫ ADA PARKING SIGN - SEE DETAIL 8C007
- ⑬ ADA PARKING SIGN (VAN) - SEE DETAIL 8C007
- ⑭ LIGHT POLE - SEE ELECTRICAL PLANS
- ⑮ TRASH ENCLOSURE - SEE ARCHITECTURAL PLANS
- ⑯ NUMBER NOT USED
- ⑰ MONUMENT SIGN - SEE ARCHITECTURAL PLANS
- ⑱ CONCRETE STAIRS WITH HAND RAIL - SEE NOTE 1
- ⑲ ADA CONCRETE RAMP WITH HAND RAIL - SEE NOTE 1
- ⑳ NO PARKING ANY TIME WITH ARROWS P-31
- ㉑ NO PARKING EMERGENCY VEHICLE TURNAROUND
- ㉒ 2" WIDE CURB DRAINAGE CHASE
- MAX. 2% SLOPE IN ANY DIRECTION
- MAX. 0.3% SLOPE