

GENERAL NOTES - MONUMENT SIGN:

1. ALL SIGN MATERIALS TO MATCH THOSE UTILIZED IN BUILDING CONSTRUCTION.
2. SIGN (BY OTHERS) SHALL BE ILLUMINATED FROM INTERIOR.
3. ELECTRICAL CONTRACTOR TO COORDINATE POWER SUPPLY AS REQUIRED BY SIGN SUPPLIER.
4. SIGN ANCHORAGE BY SIGN SUPPLIER.
5. SEE SHEET S001 FOR CONCRETE, MASONRY, AND REINFORCING REQUIREMENTS.
6. CONTRACTOR OPTION FOR CAST CONCRETE IN LIEU OF MASONRY.

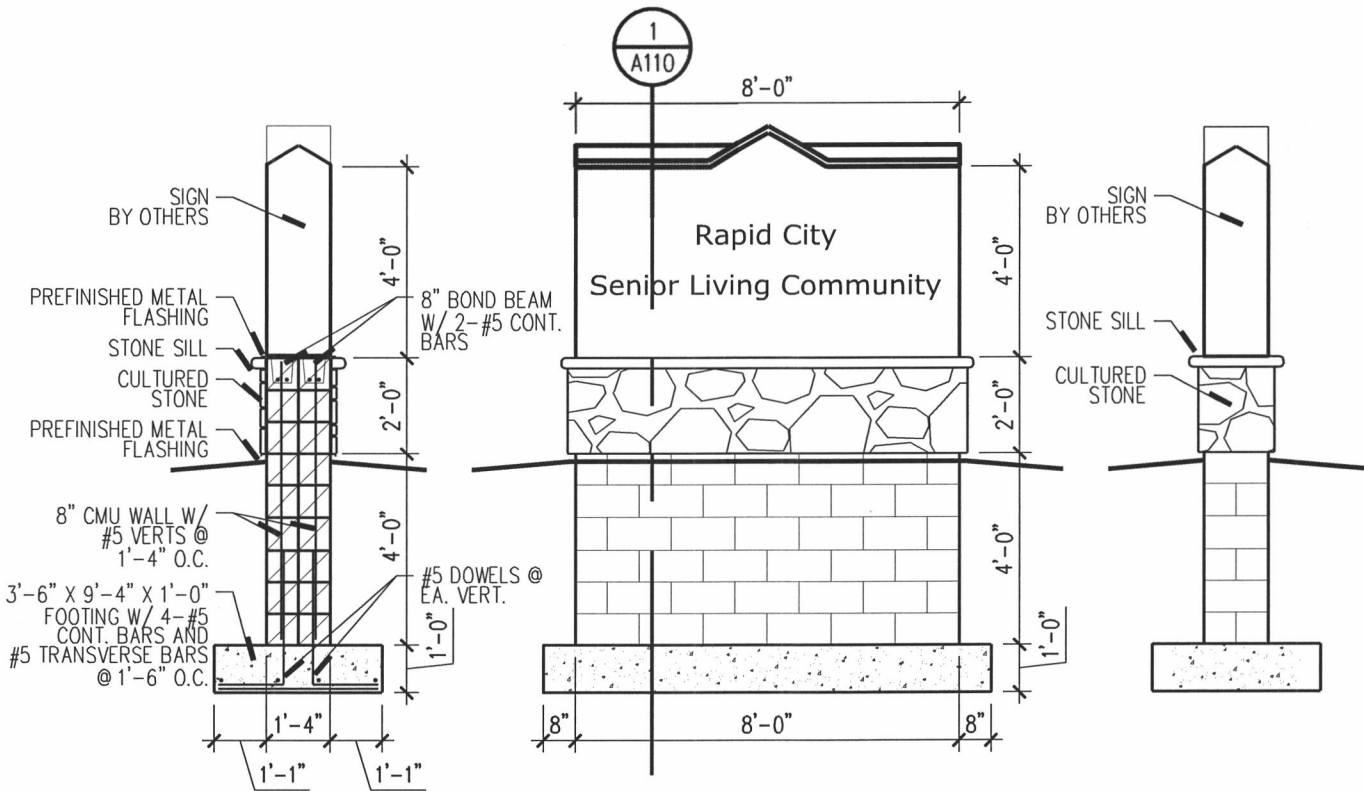
CONCRETE WALL OPTION:

1'-4" WALL: REINFORCE W/ #5 HORIZ. @ 1'-6" O.C. (EACH FACE)
AND #5 VERT. @ 1'-6" O.C. (EACH FACE)

RECEIVED

SEP 11 2015

Rapid City Community Planning
& Development Services



Monument Sign - Section / Elevations

1/4" = 1'-0"