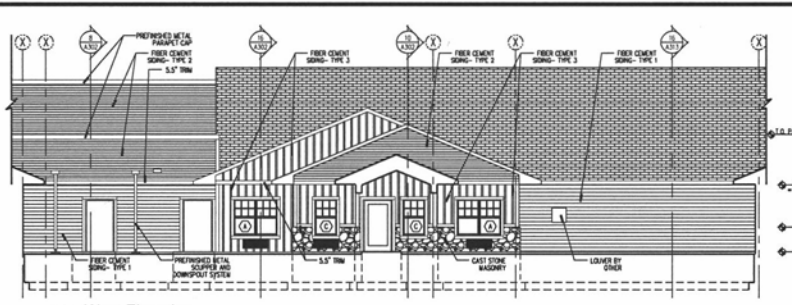


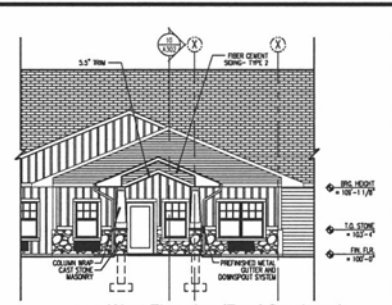
North Elevation

A201 1/8" = 1'-0"



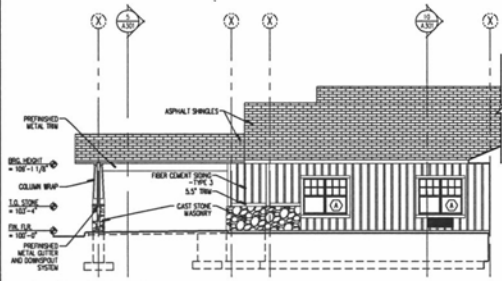
West Elevation

A201 1/8" = 1'-0"



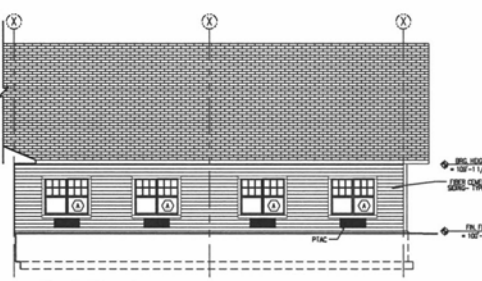
West Elevation (Roof Overhang)

A201 1/8" = 1'-0"



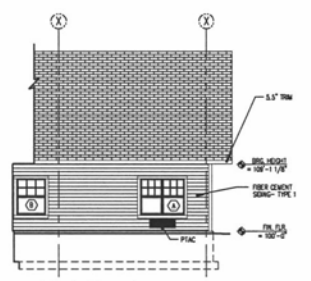
South Elevation

A201 1/8" = 1'-0"



North Elevation

A201 1/8" = 1'-0"



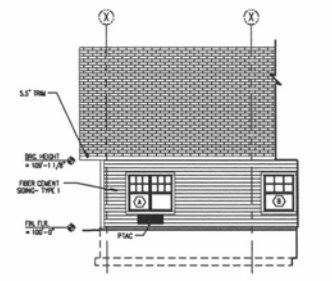
North Elevation

A201 1/8" = 1'-0"



West Elevation

A201 1/8" = 1'-0"



South Elevation

A201 1/8" = 1'-0"



South Elevation

A201 1/8" = 1'-0"

ICON ARCHITECTURAL GROUP

4000 GARDEN VIEW DRIVE
SUITE 101
GRAND FORKS, ND 58201
P: 701.772.4286 FAX: 701.772.4278
www.iconarchitect.com

STRUCTURAL
ICON Architectural Group
4000 Garden View Drive Suite 101
Grand Forks, ND 58201
(701) 772-4286 Office
(701) 772-4278 Fax

MECHANICAL
LKPB Engineers, Inc.
807 East Center Street Suite 101
Rochester, MN 55904
(507) 282-9882 Office
(507) 282-4189 Fax

ELECTRICAL
JB Electrical Design, P.C.
1419 148th Lane NW
Andover, MN 55304
(763) 486-0965 Office

CIVIL
KLJ
330 Pinewood Drive
Rapid City, SD 57701
(605) 721-5553 Office

FOODSERVICE
Culmax
311 4th Ave S
Sarcel, MN 56377
(507) 258-6507 Office

Rapid City Senior Living Community

Tablerock Road
Rapid City, South Dakota 57701

Drawing History

No.	Description	Date
1	1st Package #1 (Pkg#1)	8/26/13

DRAWN BY: LKLP JH: 13-1115

GENERAL NOTES - EXTERIOR ELEVATIONS:
1. SEE SHEET A201 FOR APPLICABLE GENERAL NOTES.

NOT FOR CONSTRUCTION

Exterior Elevations

sheet
A201

Semi-Private

*A versatile option
that complements
any setting*

Imperial Select Cedar Texture

Thru-picket "good neighbor" design is equally attractive on both sides. ColorLast® colors feature reinforcement in top rail for added strength and durability.

Heights: 4', 5' & 6' (5' & 6' include midrail)
Picket Style: 7/8" x 3"
Picket Spacing: 7/16"

- White
- Almond
- Natural Clay
- Weathered Blend
- NEW** Timber Blend
- NEW** Frontier Blend
- Arbor Blend
- Arctic Blend
- NEW** Brazilian Blend
- Sierra Blend



Imperial Smooth Finish

Heights: 3', 4', 5' & 6'
(5' & 6' include midrail)
Picket Style: 7/8" x 3"
Picket Spacing: 7/16"

- White
- Almond
- Natural Clay



Imperial without Midrail

RECEIVED

SEP 11 2015

Rapid City Community Planning
& Development Services