

EXHIBIT 'A'  
**VACATION OF A PORTION OF  
 WEST RAPID STREET RIGHT-OF-WAY**  
 LOCATED IN SW1/4 OF SW1/4,  
 SECTION 34, T2N, R7E, BHM  
 RAPID CITY, PENNINGTON COUNTY, SOUTH DAKOTA



AUGUST 14, 2015  
 0 10' 20'  
 SCALE: 1" = 20'

**RECEIVED**

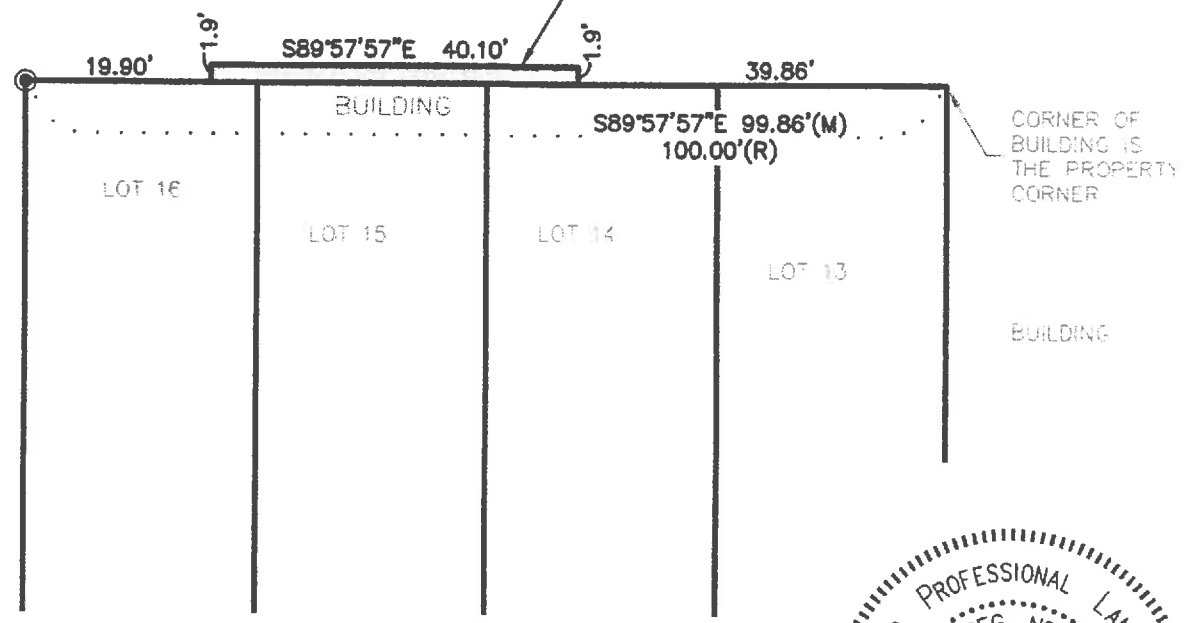
AUG 28 2015

**RAPID CITY COMMUNITY PLANNING  
 & DEVELOPMENT SERVICES**

**WEST RAPID STREET**  
 64' WIDE RIGHT-OF-WAY OF RECORD

PORTION OF  
 RIGHT-OF-WAY  
 TO BE VACATED  
 THIS DOCUMENT  
 0.002 Ac.±

**SAINT ONCE STREET**  
 60' WIDE RIGHT-OF-WAY OF RECORD



**RENNER ASSOCIATES, LLC**  
 CIVIL ENGINEERING • LAND SURVEYING

616 SIXTH STREET PH: 605. 721-7310  
 RENNERASOCC.COM RAPID CITY, SD 57701 FX: 605. 721-7313