

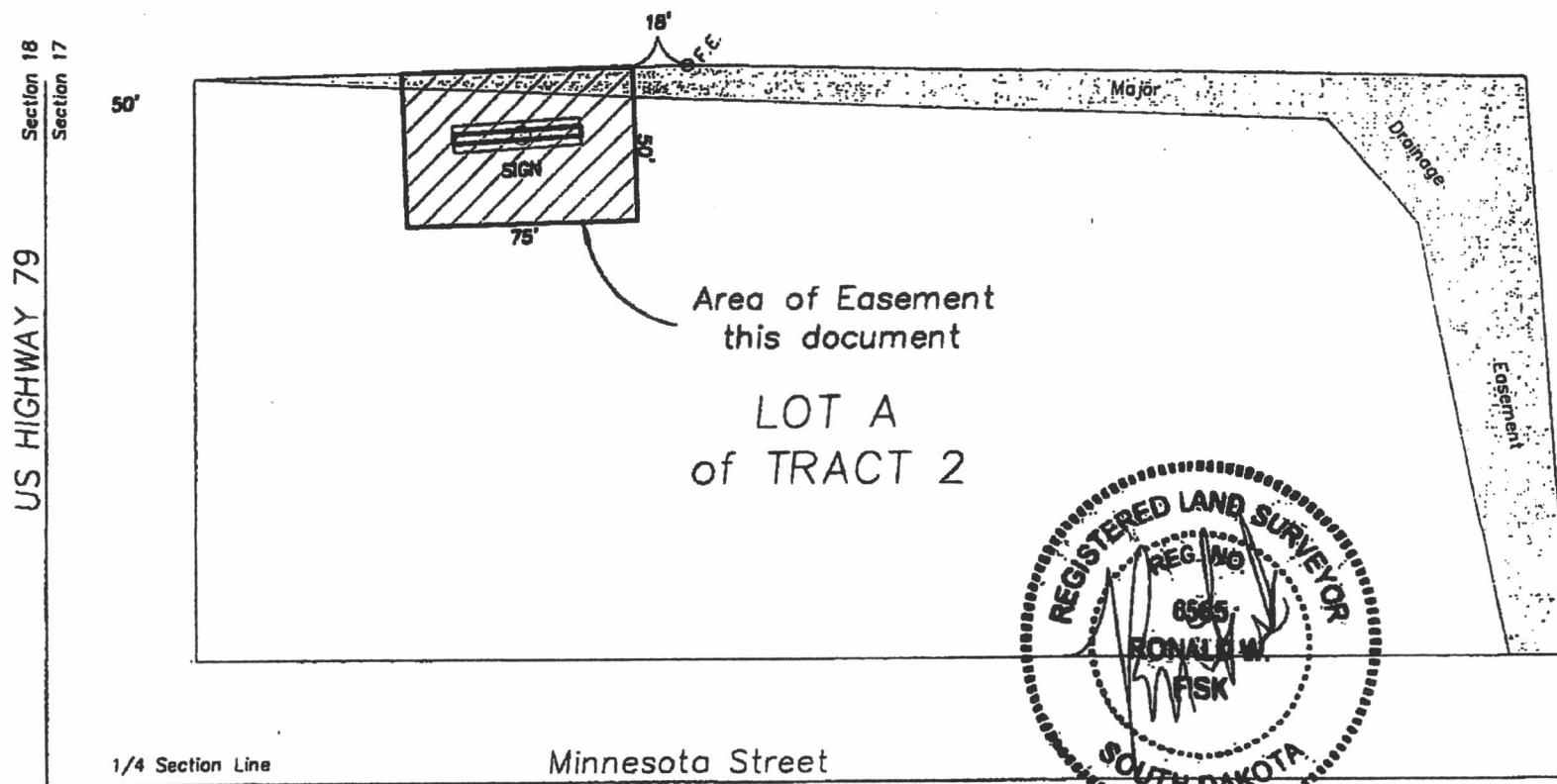
# EXHIBIT A

## EASEMENT

LOT A OF TRACT 2, KORMYLO SUBDIVISION  
 LOCATED IN SW1/4 OF NW1/4 OF SECTION 17, T1N, R8E, BHM,  
 RAPID CITY, PENNINGTON COUNTY, SOUTH DAKOTA



1"=60'



PREPARED BY:  
 FISK LAND SURVEYING & CONSULTING ENGINEERS, INC.  
 P.O. BOX 8154, RAPID CITY, SD 57709 (605) 348-1538 July 26, 2006

NO. 01-01-01