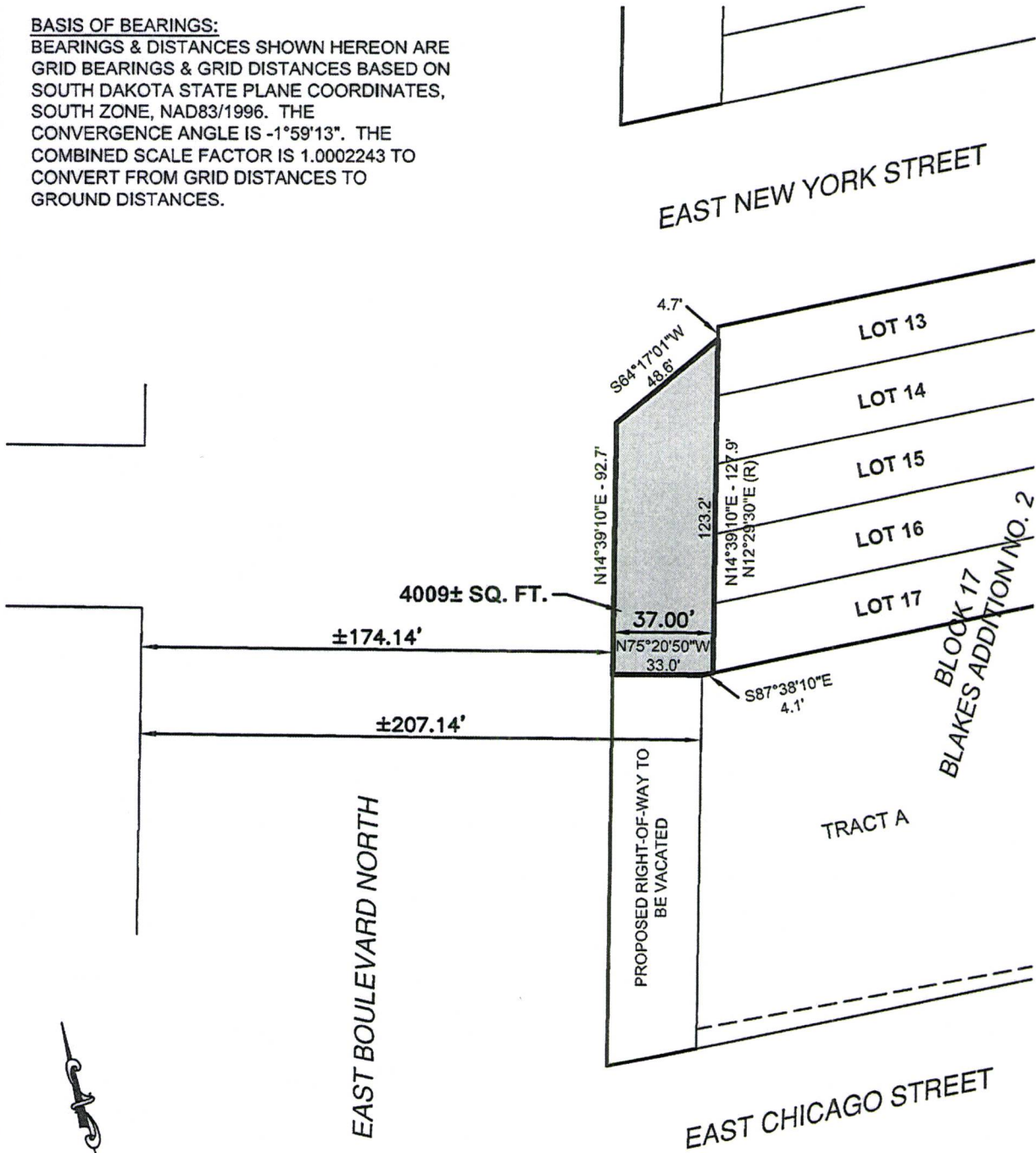


EXHIBIT A

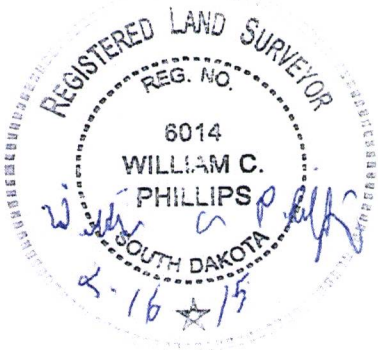
VACATION OF RIGHT-OF-WAY

THAT PORTION OF THE EASTERLY 37.00 FEET OF EAST BOULEVARD NORTH RIGHT-OF-WAY  
ABUTTING LOTS 13 - 17, BLOCK 17, BLAKES ADDITION NO. 2 LOCATED IN THE SE1/4 OF  
SECTION 36, TOWNSHIP 2 NORTH, RANGE 7 EAST OF THE BLACK HILLS MERIDIAN  
RAPID CITY, PENNINGTON COUNTY, SOUTH DAKOTA

**BASIS OF BEARINGS:**  
BEARINGS & DISTANCES SHOWN HEREON ARE  
GRID BEARINGS & GRID DISTANCES BASED ON  
SOUTH DAKOTA STATE PLANE COORDINATES,  
SOUTH ZONE, NAD83/1996. THE  
CONVERGENCE ANGLE IS -1°59'13". THE  
COMBINED SCALE FACTOR IS 1.0002243 TO  
CONVERT FROM GRID DISTANCES TO  
GROUND DISTANCES.



I, WILLIAM C. PHILLIPS, PROFESSIONAL LAND SURVEYOR, S.D. NO. 6014, DO  
HEREBY CERTIFY THAT THE EASEMENT LOCATION SHOWN HEREON WAS MADE BY  
ME, OR UNDER MY DIRECTION, FROM NOTES MADE IN THE FIELD AND RECORD  
DOCUMENTS, THE SAME IS TRUE AND CORRECT TO THE BEST OF MY KNOWLEDGE  
AND BELIEF.



(R) RECORD DIMENSION PER PLAT  
BOOK STEEL FILE (BLAKES  
ADDITION).

RIGHT-OF-WAY TO BE VACATED

PREPARED BY:  
KLJ  
330 KNOLLWOOD DRIVE  
RAPID CITY, SD 57701-6611  
(605) 721-5553

RECEIVED

JUN 09 2015

RAPID CITY COMMUNITY PLANNING  
& DEVELOPMENT SERVICES

