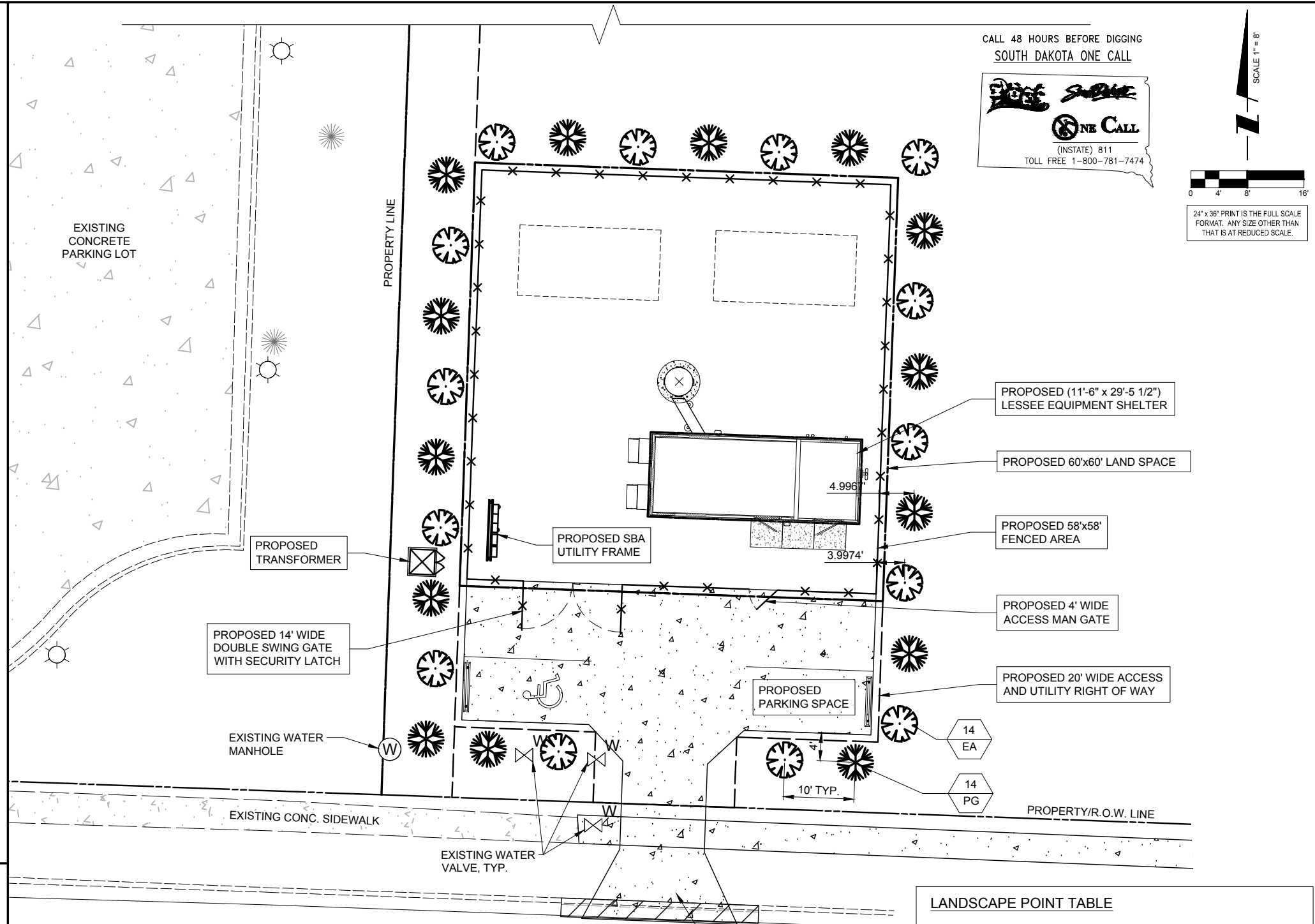
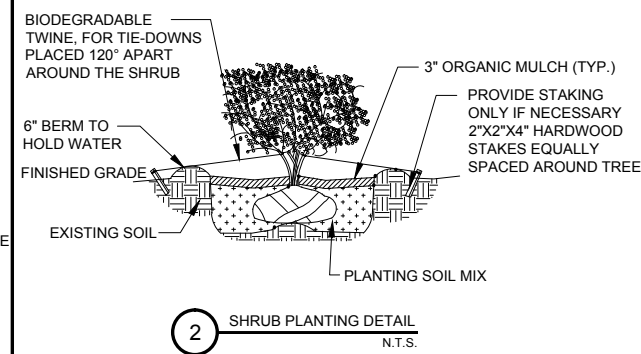
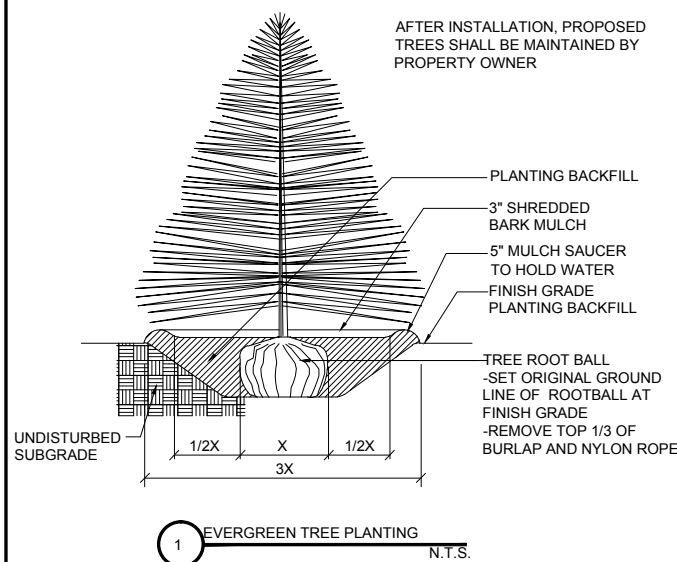


15UR010

GENERAL LANDSCAPE NOTES

1. PRUNE NEWLY INSTALLED SHRUBS. WORK SHALL BE DONE BY EXPERIENCED PERSONNEL TO THE ACCEPTED HORTICULTURAL AND ARBORICULTURAL STANDARDS. PRUNING SHALL RESULT IN A LOOSE OUTLINE CONFORMING TO THE GENERAL SHAPE OF THE SHRUB TYPE. DO NOT USE HEDGE SHEARS.
2. ALL PLANTING STOCK SHALL BE NURSERY-GROWN IN ACCORDANCE WITH GOOD HORTICULTURAL PRACTICE. PLANTS SHALL BE FREE OF DISEASE, INSECTS EGGS, LARVAE AND DEFECTS SUCH AS KNOTS, SUN-SCALD, INJURIES, ABRASIONS OR DISFIGUREMENT. THEY SHALL HAVE SOUND, HEALTHY VIGOROUS AND UNIFORM GROWTH TYPICAL OF THE SPECIES AND VARIETY, WELL-FORMED, FREE FROM IRREGULARITIES, WITH THE MINIMUM QUALITY AND SIZE CONFORMING TO AMERICAN STANDARD FOR NURSERY STOCK.
3. GUARANTEE: WARRANT ALL PLANT MATERIAL TO BE TRUE TO BOTANICAL NAME AND SPECIFIED SIZE. AFTER COMPLETION OF PLANTING, ALL PLANT MATERIALS SHALL BE WARRANTED AGAINST DEFECTS, INCLUDING DEATH AND UNSATISFACTORY GROWTH FOR A WARRANTY PERIOD OF ONE YEAR. THE CONTRACTOR WILL NOT BE RESPONSIBLE FOR DEFECTS RESULTING FROM NEGLECT ABUSE, DAMAGE BY OTHERS, OR UNUSUAL PHENOMENA OR INCIDENTS BEYOND THE CONTRACTORS CONTROL WHICH RESULT FROM NATURAL CAUSES SUCH AS FLOODS STORMS, FIRES OR VANDALISM. REPLACEMENTS: DURING THE WARRANTY PERIOD, REPLACE ONE TIME, AT NO ADDITIONAL COST TO THE OWNER, PLANT MATERIALS THAT ARE DEAD, OR IN THE OPINION OF THE LANDSCAPE ARCHITECT, IN AN UNHEALTHY OR UNSIGHTLY CONDITION. REJECTED PLANT MATERIALS SHALL BE REMOVED FROM THE SITE AT CONTRACTOR'S EXPENSE. REPLACEMENTS ARE TO BE MADE NO LATER THAN THE SUBSEQUENT PLANTING SEASON. RESTORE AREAS DISTURBED BY REPLACEMENT OPERATIONS.
4. MULCHING SHALL BE DONE WITHIN 48 HOURS AFTER PLANTING. MULCH SHRUB BEDS TO A UNIFORM DEPTH OF THREE INCHES. MULCH SHALL BE CLEAN COMPOSTED PINE BARK MULCH FREE OF FOREIGN MATERIAL AND LARGE PIECES OVER THREE INCHES LONG. DO NOT MULCH TREE AND SHRUB PLANTING PITS.
5. TOPSOIL SHALL CONSIST OF FERTILE FRIABLE NATURAL LOAM, CONTAINING A LIBERAL AMOUNT OF HUMUS AND SHALL BE SUBJECT TO INSPECTION AND APPROVAL. IT SHALL BE FREE OF ADMIXTURES OF SUBSOIL AND FREE OF CRAB GRASS, ROOTS, STICKS AND OTHER EXTRANEEOUS MATTER, AND SHALL NOT BE USED FOR PLANTING OPERATIONS WHILE IN A FROZEN OR MUDDY CONDITIONS.
6. REPAIR ALL TURF AREAS BY SEEDING. SEEDING INSTALLATION SHALL BE EXECUTED ONLY AFTER ALL FINISH GRADING HAS BEEN COMPLETED. NO SEEDING WORK SHALL BE DONE PAST SEPTEMBER 15, UNLESS APPROVED BY THE OWNER'S REPRESENTATIVE. SEED: SEED MIX SHALL MATCH EXISTING TURF, OR BE A 50/50 MIX OF CERTIFIED IMPROVED BLEND OF BLUEGRASS AND CERTIFIED IMPROVED PERENNIAL RYE. MIX SHALL BE APPROVED BY THE OWNER'S REPRESENTATIVE PRIOR TO PLANTING. SEEDING SHALL BE APPLIED AT A MINIMUM RATE OF 120 POUNDS PER ACRE. FUTERRA BLANKET, OR EQUAL, SHALL BE USED FOR EROSION CONTROL MULCH WHERE NECESSARY IN LIEU OF HYDRO MULCH.



<u>LANDSCAPE POINT TABLE</u>			
<u>SITE AREA INFO:</u>			
DEVELOPED AREA			3600 SQ. FT.
BUILDING AREA			338.79 SQ. FT.
TOTAL LANDSCAPE POINTS REQUIRED			PENDING
<u>SITE LANDSCAPE POINTS</u>			
PLANT TYPE	QUANTITY	POINTS	TOTAL
LARGE TREES	14	2000	28000
SHRUBS	14	250	3500
TOTAL LANDSCAPE POINTS			31500

PLANT LIST

SYMBOL	BOTANICAL NAME	COMMON NAME	QUANTITY	SIZE	COMMENTS
TREES					
PG	PICEA GLAUCA	WHITE SPRUCE	14	5 FT. HT. MIN.	B & B (BALLED & BURLAPPED)
EA	EUONYMUS ALATUS	BURNING BUSH	14	24" HT. MIN.	B & B (BALLED & BURLAPPED)

3	PLANT QUANTITY
PG	PLANT SYMBOL

SBA

SBA TOWERS V, LLC
5900 BROKEN SOUND PKWY NW
BOCA RATON, FL 33487
PHONE: 1-800-487-7483

TERRA
CONSULTING GROUP, LTD.

600 Busse Highway
Park Ridge, IL 60068
Ph: 847/698-6400
Fax: 847/698-6401

REVISIONS		
NO.	DESCRIPTION	DATE
A	ISSUED FOR REVIEW	03/31/15
B	REVISED PER COMMENTS	04/14/15
C	REVISED PER COMMENTS	4/20/15
D	REVISED PER COMMENTS	4/30/15
E	REVISED PER FIBER AND LANDSCAPING	6/1/15

SITE SD-15725

RAPID CITY 4

E KNOLLWOOD DR.
RAPID CITY, SD 57701

DRAWN BY:	ML
CHECKED BY:	DM
DATE:	03/17/15
PROJECT #:	7632

SHEET TITLE

LANDSCAPE PLAN

SHEET NUMBER

L-1