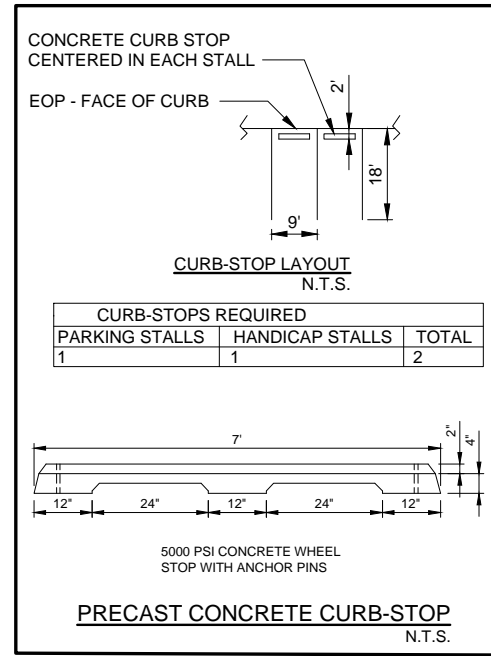
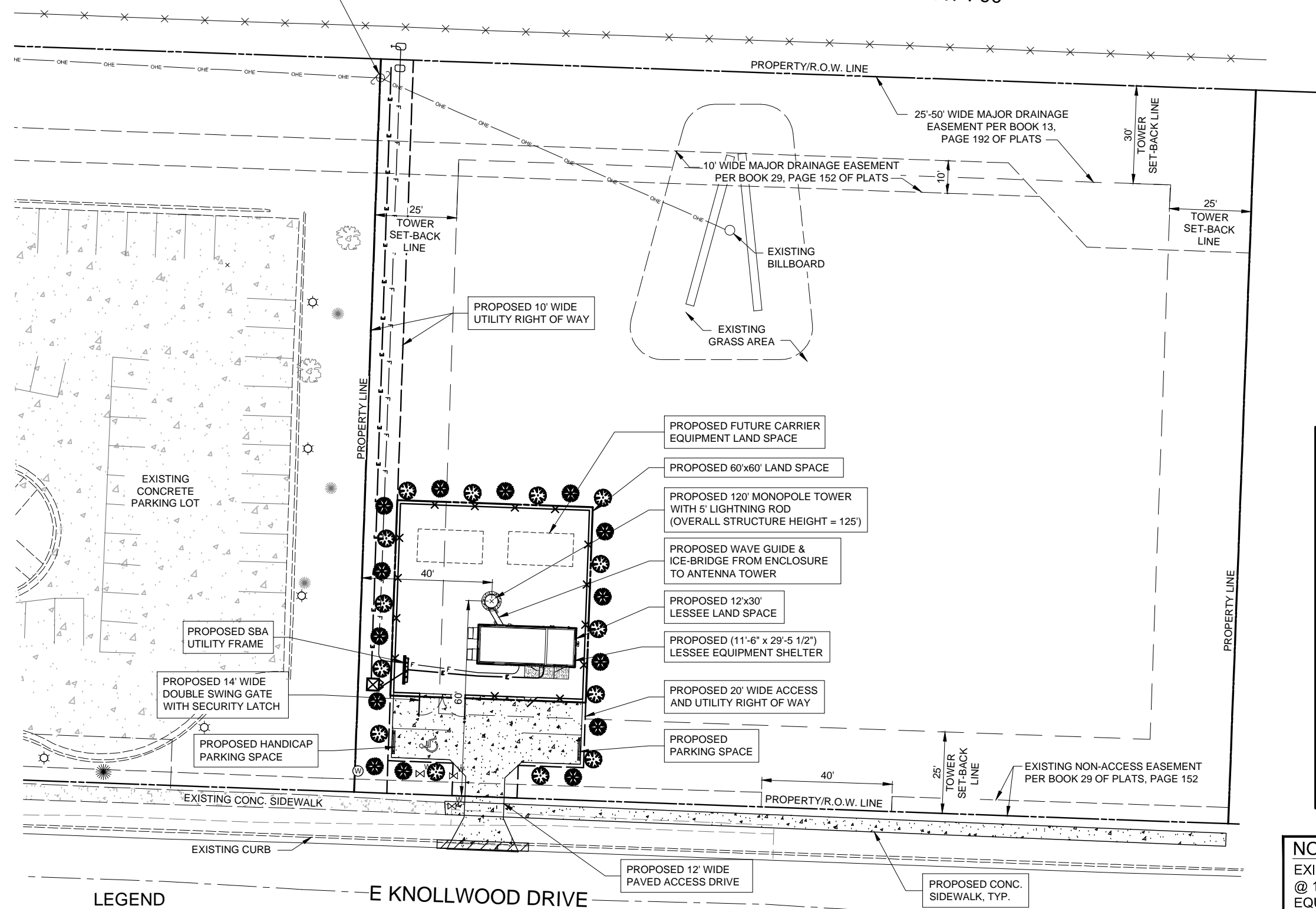
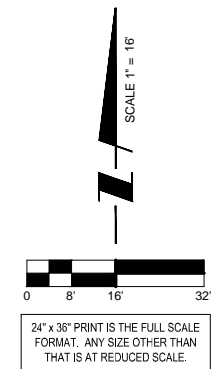


15UR010

INTERSTATE HIGHWAY I-90



NOTE:
 EXISTING BUILDING = 0 S.F.
 @ 11 PARKING SPACES PER 1000 S.F.
 EQUALS TO 0 PARKING SPACES.
 PROPOSED TOWER & EQUIPMENT
 REQUIRES (1) PARKING SPACES.
 TOTAL REQUIRED PARKING SPACES = 1
 TOTAL REQUIRED HANDICAP SPACES = 1
 TOTAL PARKING SPACES AFTER
 CONSTRUCTION = 2

CALL 48 HOURS BEFORE DIGGING
 SOUTH DAKOTA ONE CALL



Engineering
 Architecture
 Surveying
 Environmental

LEGEND

- TREE DECIDUOUS
- TREE CONIFEROUS
- SHRUB
- TREE - STUMP
- ELEC LIGHT POLE
- SIGN
- GUY ANCHOR
- ELEC POLE
- TELE PEDESTAL
- WATER VALVE
- WATER MANHOLE
- UNDERGROUND ELECTRIC
- UNDERGROUND GAS
- UNDERGROUND FIBER
- CHAIN LINK FENCE
- CONCRETE SURFACE

1 LOCATION PLAN
 SCALE: 1" = 16'

SBA
 SBA TOWERS V, LLC
 5900 BROKEN SOUND PKWY NW
 BOCA RATON, FL 33487
 PHONE: 1-800-487-7483

TERRA
 CONSULTING GROUP, LTD.
 600 Busse Highway
 Park Ridge, IL 60068
 Ph: 847/698-6400
 Fax: 847/698-6401

NO.	DESCRIPTION	DATE
A	ISSUED FOR REVIEW	03/31/15
B	REVISED PER COMMENTS	04/14/15
C	REVISED PER COMMENTS	4/20/15
D	REVISED PER COMMENTS	4/30/15
E	REVISED PER FIBER AND LANDSCAPING	6/1/15

SITE SD-15725

RAPID CITY 4

E KNOLLWOOD DR.
 RAPID CITY, SD 57701

DRAWN BY:	ML
CHECKED BY:	DM
DATE:	03/17/15
PROJECT #:	7632

SHEET TITLE
 LOCATION PLAN

SHEET NUMBER
LP