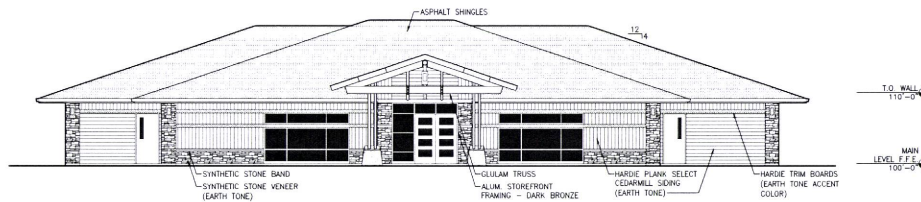


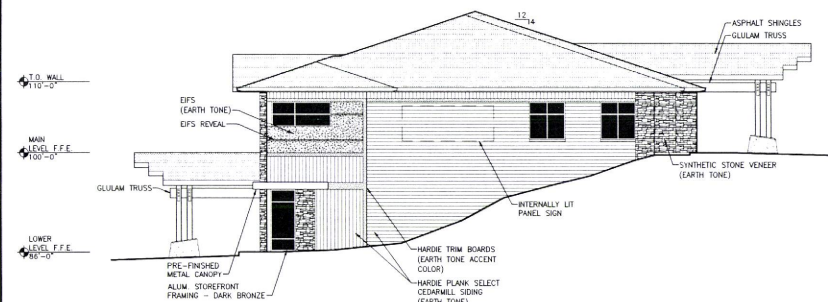
RECEIVED

APR 24 2015

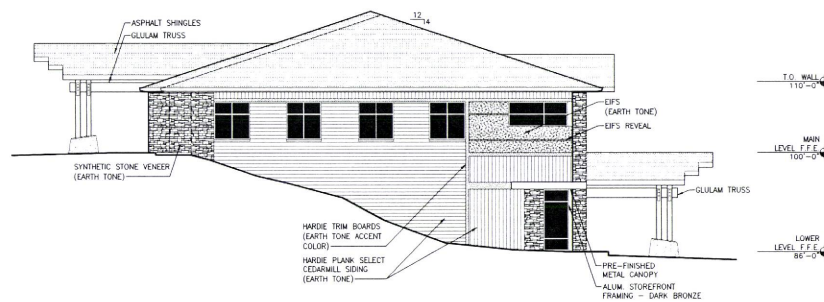
Rapid City Community Planning  
& Development Services



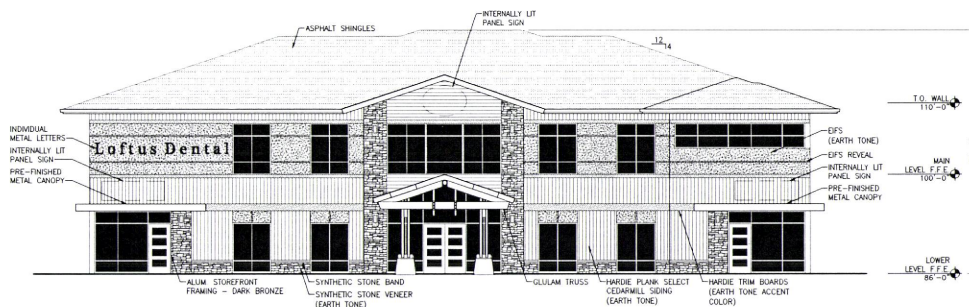
D1 SOUTH ELEVATION  
SCALE: 1/8" = 1'-0"



B1 WEST ELEVATION  
SCALE: 1/8" = 1'-0"



B4 EAST ELEVATION  
SCALE: 1/8" = 1'-0"



A1 NORTH ELEVATION  
SCALE: 1/8" = 1'-0"

**UPPER DECK**  
ARCHITECTS, INC.  
50 MINNESOTA ST., SUITE 1  
RAPID CITY, SD 57701  
PHONE: 605 721-0237  
FAX: 605 721-0240

NO.	DESCRIPTION	DATE
1	PRELIMINARY	04/24/15

CONSULTANTS:

**Loftus Dental**  
Rapid City, South Dakota

PROJECT NUMBER: 14457  
DRAWN BY: RRS  
CHECK BY: JAC

SHEET TITLE:  
EXTERIOR ELEVATIONS-  
PHASE I

**A-102**

PRELIMINARY - NOT FOR CONSTRUCTION