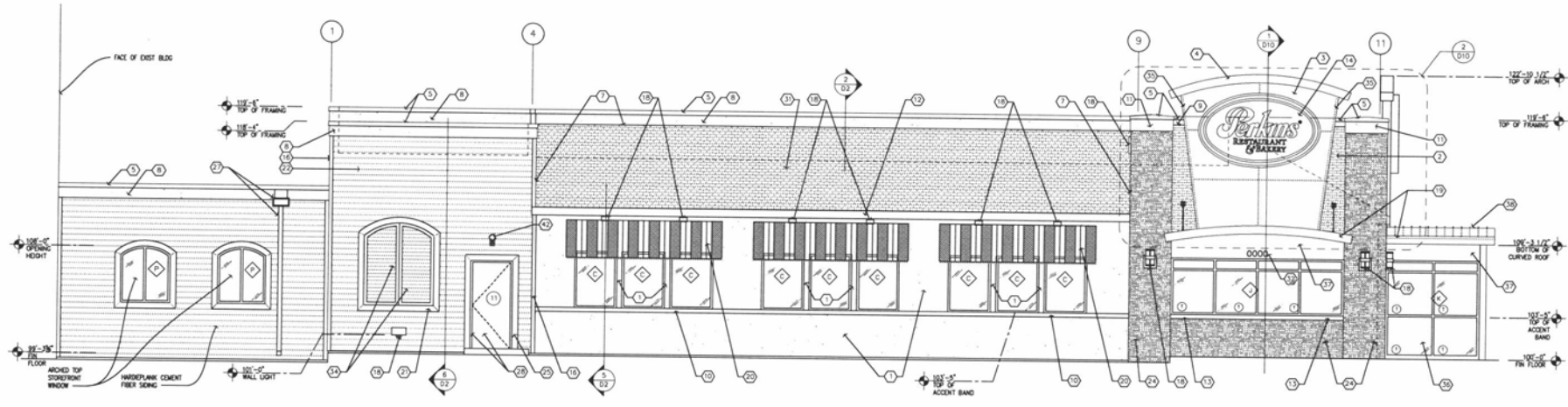




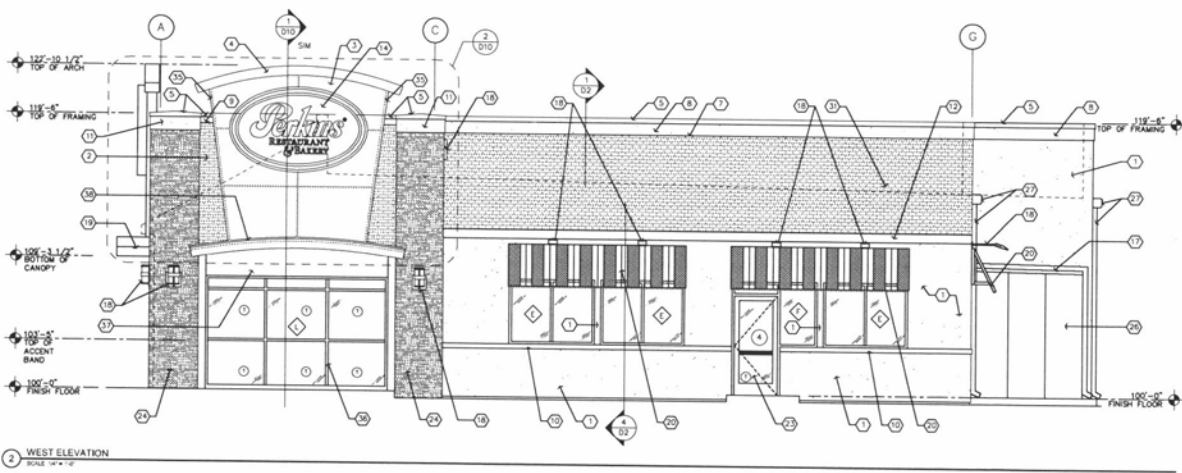
Studio 55 Architects, LLP
10700 Highway 55, Suite 275
Plymouth, MN 55441
763.544.8370
studio55architects.com



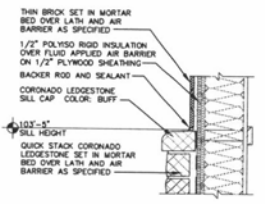
RAPID CITY
SOUTH DAKOTA



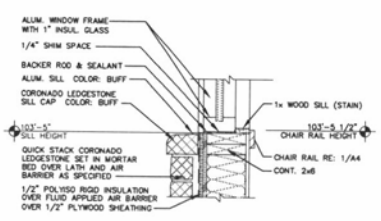
1 NORTH ELEVATION
SCALE 1/8" = 1'-0"



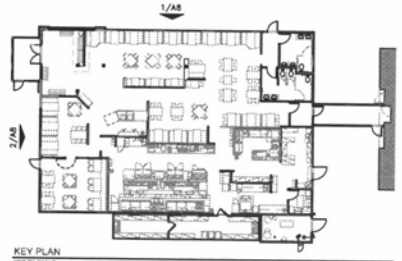
2 WEST ELEVATION
SCALE 1/8" = 1'-0"



4 SILL DETAIL
SCALE 1/2" = 1'-0"



3 SILL DETAIL
SCALE 1/2" = 1'-0"



KEY PLAN
NOT TO SCALE

FINISH KEY:

- EXTERIOR PAINTS/COLORS**
- [EP-1] PAINT: GLODEN PROFESSIONAL #A187 BURMISE BEIGE
 - [EP-2] PAINT: GLODEN PROFESSIONAL #A188 MEADOWLARK
 - [EP-3] PAINT: GLODEN PROFESSIONAL #A105 WREATH OF GREEN
 - [EP-4] PAINT: GLODEN PROFESSIONAL #A108 PRINCE EDWARD ISLE
 - [EP-5] PAINT: GLODEN PROFESSIONAL #A109 CORNER COON
- (EX-COLOR PAINT FINISH TO BE EXTERIOR SEMI-GLOSS LATEX ENAMEL)

- EXTERIOR MATERIALS**
- [S10-1] E.I.F.S. - STOUTE - 1.5 FINAL E.I.F.S. COAT TO BE A PRE-FINISHED COLOR MIX OR FIELD PAINTED TO MATCH ABOVE PAINT COLORS (EITHER OPTION ACCEPTABLE, SUBMIT COLOR SAMPLE FOR APPROVAL IF PRE-FINISHED OPTION IS ELECTED)
 - [S10-2] E.I.F.S. - STOUTE - R1.5 FINAL E.I.F.S. COAT TO BE A PRE-FINISHED COLOR MIX OR FIELD PAINTED TO MATCH ABOVE PAINT COLORS (EITHER OPTION ACCEPTABLE, SUBMIT COLOR SAMPLE FOR APPROVAL IF PRE-FINISHED OPTION IS ELECTED)
 - [S1-1] CORONADO STONE PRODUCTS, QUICK STACK LEDGESTONE, COLOR: SUNSET BLEND
 - [S1-2] DAF-EX MATERIALS CORPORATION MODEL: TIMBERLINE 5 5/8" EXPOSURE PRESTIQUE 30 HIGH DEFINITION SHINGLE, COLOR: HUNTER GREEN
 - [S1-3] SUMMITVILLE THIN BRICK COLOR SAVANNAH 26, MORTAR COLOR: PLAIN GRAY
 - [AW-1] CURVED ALUMINUM AWNING (SEE SHEET A10.1)
 - [AR-2] CUSTOM ALUMINUM AWNING (SEE SHEET A10.1) WITH PRINTED PATTERN
 - [HP-1] HARDEPLANK H2S SONG - SELECT CEDARWILL 6 1/4"
 - [HP-2] HARDETRIM HLD - CEDAR WILL 4" - JAMES HARDIE BUILDING PRODUCTS 1-B88-JHARDE
 - [HP-3] HARDETRIM HLD - CEDAR WILL 6" - JAMES HARDIE BUILDING PRODUCTS 1-B88-JHARDE
 - [HP-4] HARDEPANEL, VERTICAL SONG - SMOOTH FINISH, PRIMED. JAMES HARDIE BUILDING PRODUCTS 1-B88-JHARDE

KEY NOTES:

- 1 1" E.I.F.S. BASE OVER 1/2" PLYWOOD SHEATHING [EP-3] REFER TO WALL SECTIONS. PRE-FINISHED E.I.F.S. COLOR OR FIELD PAINT [EP-3]
- 2 SUMMITVILLE THIN BRICK [S1-3]
- 3 HARDEPANEL, VERTICAL SONG [HP-4] PAINT [EP-3]
- 4 PRE-FINISHED METAL CAP FLASHING. COLOR TO MATCH [EP-4]
- 5 PRE-FINISHED METAL CAP FLASHING. COLOR TO MATCH [EP-3]
- 6 NOT USED
- 7 PRE-FINISHED METAL FLASHING. COLOR TO MATCH ADJACENT WALL SURFACE
- 8 12" E.I.F.S. ACCENT BAND [S10-1] REFER TO 3/D2. PRE-FINISHED E.I.F.S. COLOR OR FIELD PAINT [EP-3]
- 9 6" E.I.F.S. ACCENT BAND [EP-3]
- 10 4" E.I.F.S. ACCENT BAND [S10-1] REFER TO WALL SECTIONS. PRE-FINISHED E.I.F.S. COLOR OR FIELD PAINT [EP-3]
- 11 12" E.I.F.S. ACCENT BAND [S10-1] REFER TO WALL SECTIONS. PRE-FINISHED E.I.F.S. COLOR OR FIELD PAINT [EP-3]
- 12 2x WOOD FASADA. PAINT FINISH [EP-3]
- 13 LEDGESTONE SILL CAP BY CORONADO. COLOR: BUFF
- 14 SIGNAGE BY SIGNAGE CONTRACTOR
- 15 NOT USED
- 16 14" HARDETRIM [HP-3] PAINT FINISH [EP-3]
- 17 SINGLE PLY MEMBRANE OVER TAPERED INSULATION BY COOLER MANUFACTURER
- 18 WALL MOUNTED LIGHT FIXTURE. RE: ELECTRICAL DRAWINGS AND SPECIFICATIONS
- 19 PREFABRICATED CURVED CANOPY [AW-1]
- 20 PREFINISHED ALUM AWNING [AW-2]
- 21 148 HARDETRIM [HP-3] PAINT FINISH [EP-3]
- 22 ALUMINUM STORE FRONT DOOR
- 23 QUICK STACK LEDGESTONE BY CORONADO [S1-1]
- 24 148 HARDETRIM [HP-3] PAINT FINISH [EP-3]
- 25 EXTERIOR COOLER WALLS. PREFINISHED TO MATCH [EP-3]
- 26 THRU WALL SCUPPER AND OPEN FACED DOWNSPOUT. REFER TO 4/A8. FINISH TO MATCH [EP-3]
- 27 EXTERIOR DOOR AND FRAME. PAINT FINISH [EP-3]
- 28 ROOF ACCESS LADDER (OSHA STANDARD). REFER 3/A9 AND SPECIFICATIONS. PAINT FINISH [EP-3]
- 29 ELECTRICAL EQUIPMENT RE: ELECTRICAL
- 30 ASPHALT SHINGLE [S1-1]
- 31 8' HIGH ACCESS NUMBERS PER IRC 501.2.
- 32 NOT USED
- 33 PAIR 48" x 80" ARCHED TOPPED SHUTTERS (7'-8" RADIUS). FIELD CONSTRUCTED WITH HARDEPLANK SONG AND TRIM ELEMENTS. PAINT FINISH [EP-3] RE: 8/A10.1, 7/A10.1 AND 8/A10.1
- 34 PRE-FINISHED METAL FLASHING [EP-3]
- 35 ALUMINUM STOREFRONT SYSTEM
- 36 PRE-FINISHED METAL CLOSURE PANEL
- 37 CURVED STANDING SEAM METAL ROOF
- 38 NOT USED
- 39 NOT USED
- 40 EXTERIOR EMERGENCY LIGHT. RE: ELECTRICAL
- 41 KNIX BOX. VERIFY LOCATION WITH FIRE MARSHAL PRIOR TO INSTALLATION. C.S.C.I.
- 42 FIRE DUCT. SAMEAS CONNECTION.
- 43 NOT USED
- 44 PAIR 34" x 80" ARCHED TOPPED SHUTTERS (4'-5" RADIUS). FIELD CONSTRUCTED WITH HARDEPLANK SONG AND TRIM ELEMENTS. PAINT FINISH [EP-3] RE: 7 AND 8/A10.1

PRELIMINARY
NOT FOR CONSTRUCTION

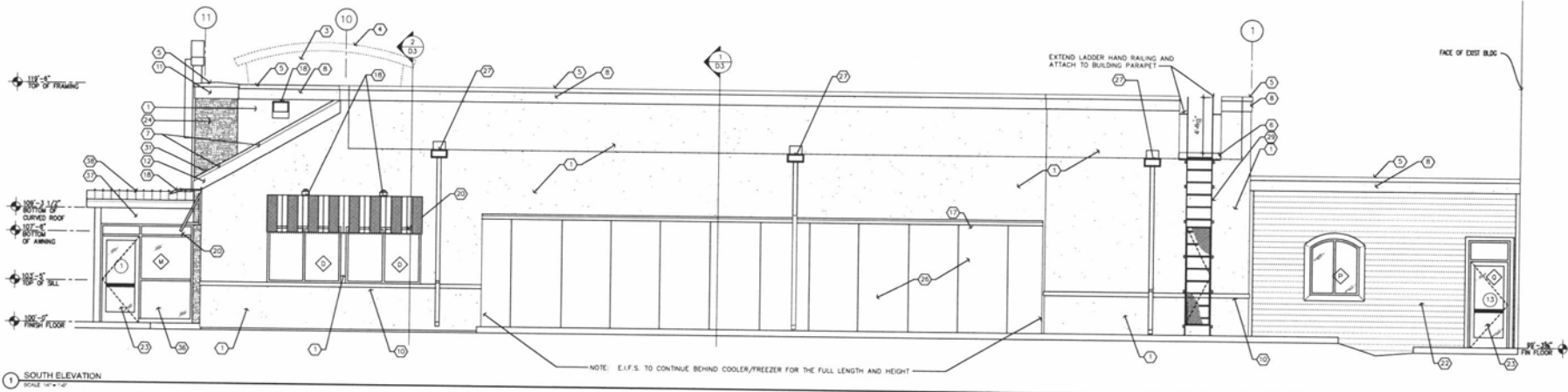
No.	Date	Revision
-	3-27-15	PLANNED DEVELOPMENT SUBMITTAL

I hereby certify that this plan, specification, or report was prepared by me or under my direct supervision, and that I am a duly Licensed Architect under the laws of the State of Minnesota.

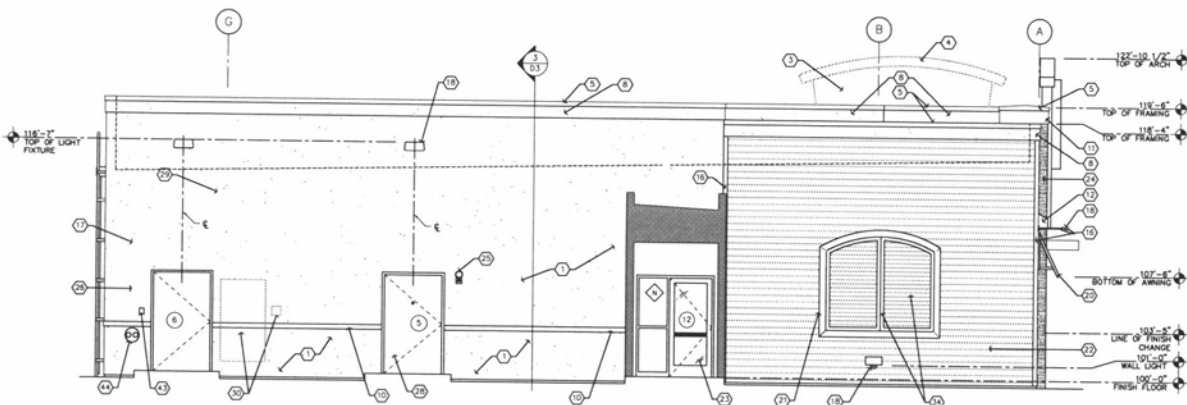
Printed Name: _____
Signature: _____
Date: _____ License #: _____

EXTERIOR ELEVATIONS

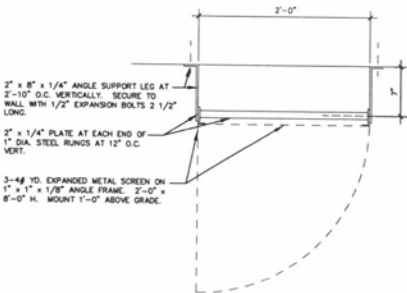
Project - _____
Date - _____
Drawn by - _____
Checked by - _____
Drawing Number - _____



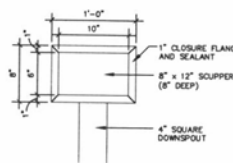
1 SOUTH ELEVATION
SCALE 1/4" = 1'-0"



2 EAST ELEVATION
SCALE 1/4" = 1'-0"



3 LADDER DETAIL
SCALE 1/2" = 1'-0"



4 SCUPPER DETAIL
SCALE 1/2" = 1'-0"

FINISH KEY:

EXTERIOR PAINTS/COLORS

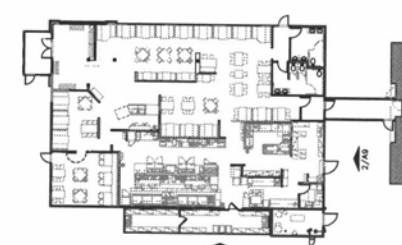
- [EP-1] PAINT: GLODEN PROFESSIONAL #A187 BURGESS BEIGE
 - [EP-2] PAINT: GLODEN PROFESSIONAL #A138 MEADOWLARK
 - [EP-3] PAINT: GLODEN PROFESSIONAL #A108 WREATH OF GREEN
 - [EP-4] PAINT: GLODEN PROFESSIONAL #A1208 PRINCE EDWARD ISLE
 - [EP-5] PAINT: GLODEN PROFESSIONAL #A048 COPPER COB
- (EXTERIOR PAINT FINISH TO BE EXTERIOR SEMI-GLOSS LATEX ENAMEL)

EXTERIOR MATERIALS

- [S10-1] E.I.F.S.: STOLITE - R1.5 FINAL E.I.F.S. COAT TO BE A PRE-FINISHED COLOR MIX OR FIELD PAINTED TO MATCH ABOVE PAINT COLORS (EITHER OPTION ACCEPTABLE. SUBMIT COLOR SAMPLE FOR APPROVAL IF PRE-FINISHED OPTION IS ELECTED.)
- [S10-2] E.I.F.S.: STOLITE - R1.5 FINAL E.I.F.S. COAT TO BE A PRE-FINISHED COLOR MIX OR FIELD PAINTED TO MATCH ABOVE PAINT COLORS (EITHER OPTION ACCEPTABLE. SUBMIT COLOR SAMPLE FOR APPROVAL IF PRE-FINISHED OPTION IS ELECTED.)
- [S1-1] CORONADO STONE PRODUCTS. QUICK STACK LEDGESTONE. COLOR: SUNSET BLEND
- [S1-2] GAF-ELK MATERIALS CORPORATION MODEL TIMBERLINE 5 5/8" EXPOSURE PRESTIQUE 30 HIGH DEFINITION SHINGLE. COLOR: HUNTER GREEN
- [BR-1] SUMMITVILLE THIN BRICK COLOR SAVANNAH 28. MORTAR COLOR: PLANK GRAY.
- [AM-1] CURVED ALUMINUM AWNING (SEE SHEET A10.1)
- [AM-2] CUSTOM ALUMINUM AWNING WITH PRINTED PATTERN
- [HP-1] HARDEPLANK H25 SIDING - SELECT CEDARMILL 6 1/4". JAMES HARDE BUILDING PRODUCTS 1-B88-JHARDE
- [HP-2] HARDETRIM HLD - CEDAR MILL 4". JAMES HARDE BUILDING PRODUCTS 1-B88-JHARDE
- [HP-3] HARDETRIM HLD - CEDAR MILL 6". JAMES HARDE BUILDING PRODUCTS 1-B88-JHARDE
- [HP-4] HARDEPANEL VERTICAL SIDING - SMOOTH FINISH, PRIMED. JAMES HARDE BUILDING PRODUCTS 1-B88-JHARDE

KEY NOTES:

- 1 1" E.I.F.S. BASE OVER 1/2" PLYWOOD SHEATHING [EP-2] REFER TO WALL SECTIONS. PRE-FINISHED E.I.F.S. COLOR OR FIELD PAINT [EP-2]
- 2 SUMMITVILLE THIN BRICK [BR-1]
- 3 HARDEPANEL VERTICAL SIDING [HP-4] PAINT [EP-3]
- 4 PRE-FINISHED METAL CAP FLASHING. COLOR TO MATCH [EP-4]
- 5 PRE-FINISHED METAL CAP FLASHING. COLOR TO MATCH [EP-4]
- 6 NOT USED
- 7 PRE-FINISHED METAL FLASHING. COLOR TO MATCH ADJACENT WALL SURFACE
- 8 12" E.I.F.S. ACCENT BAND [S10-1] REFER TO 3/02. PRE-FINISHED E.I.F.S. COLOR OR FIELD PAINT [EP-2]
- 9 6" E.I.F.S. ACCENT BAND [S10-2]
- 10 4" E.I.F.S. ACCENT BAND [S10-1] REFER TO WALL SECTIONS. PRE-FINISHED E.I.F.S. COLOR OR FIELD PAINT [EP-2]
- 11 12" E.I.F.S. ACCENT BAND [S10-1] REFER TO WALL SECTIONS. PRE-FINISHED E.I.F.S. COLOR OR FIELD PAINT [EP-2]
- 12 2x WOOD FASCIA. PAINT FINISH [EP-2]
- 13 LEDGESTONE SILL CAP BY CORONADO. COLOR: BUFF
- 14 NOT USED
- 15 1/4" HARDETRIM [HP-2] PAINT FINISH [EP-2]
- 16 SINGLE PLY MEMBRANE OVER TAPERED INSULATION BY COOLER MANUFACTURER.
- 17 WALL MOUNTED LIGHT FIXTURE. RE: ELECTRICAL DRAWINGS AND SPECIFICATIONS.
- 18 PREFABRICATED CURVED CANOPY [AM-1]
- 19 PRE-FINISHED ALUM AWNING [AM-2]
- 20 1/4" HARDETRIM [HP-2] PAINT FINISH [EP-2]
- 21 QUICK STACK LEDGESTONE BY CORONADO [S1-1]
- 22 HARDEPLANK CEMENT FIBER SIDING [HP-1] PAINT [EP-2]
- 23 ALUMINUM STORE FRONT DOOR.
- 24 CURVED STANDING SEAM METAL ROOF.
- 25 1/4" HARDETRIM [HP-2] PAINT FINISH [EP-2]
- 26 THRU WALL SCUPPER AND OPEN FACED DOWNSPOUT. REFER TO 4/A9. FINISH TO MATCH [EP-2]
- 27 EXTERIOR DOOR AND FRAME. PAINT FINISH [EP-2]
- 28 ROOF ACCESS LADDER (OSHA STANDARD). REFER 3/A9 AND SPECIFICATIONS. PAINT FINISH [EP-2]
- 29 ELECTRICAL EQUIPMENT RE: ELECTRICAL
- 30 ASPHALT SHINGLE [S1-1]
- 31 NOT USED.
- 32 4" HIGH ADDRESS NUMBERS PER IBC 501.2.
- 33 NOT USED.
- 34 PAIR 48" x 80" ARCHED TOPPED SHUTTERS (7'-8" RADIUS). FIELD CONSTRUCTED WITH HARDEPLANK SIDING AND TRIM ELEMENTS. PAINT FINISH [EP-2] RE: 7/A10.1 AND 8/A10.1
- 35 PRE-FINISHED METAL FLASHING [EP-2]
- 36 ALUMINUM STOREFRONT SYSTEM.
- 37 PRE-FINISHED METAL CLOSURE PANEL.
- 38 CURVED STANDING SEAM METAL ROOF.
- 39 NOT USED.
- 40 NOT USED.
- 41 NOT USED.
- 42 EXTERIOR EMERGENCY LIGHT. RE: ELECTRICAL.
- 43 SINK BOX. VERIFY LOCATION WITH FIRE MARSHAL PRIOR TO INSTALLATION. C.S.C.I.
- 44 FIRE DEPT. SIAMASE CONNECTION.
- 45 NOT USED.
- 46 PAIR 34" x 80" ARCHED TOPPED SHUTTERS (4'-5" RADIUS). FIELD CONSTRUCTED WITH HARDEPLANK SIDING AND TRIM ELEMENTS. PAINT FINISH [EP-2] RE: 7 AND 8/A10.1



KEY PLAN
SCALE 1/4" = 1'-0"



Studio 55 Architects, LLP
10700 Highway 55, Suite 275
Plymouth, MN 55441
763.544.8370
studio55architects.com



RAPID CITY
SOUTH DAKOTA

PRELIMINARY
NOT FOR CONSTRUCTION

No.	Date	Revision
-	3-27-15	PLANNED DEVELOPMENT SUBMITTAL

I hereby certify that this plan, specification, or report was prepared by me or under my direct supervision, and that I am a duly Licensed Architect under the laws of the State of Minnesota.

Printed Name: _____
Signature: _____
Date: _____ License #: _____

EXTERIOR ELEVATIONS

Project: _____
Date: _____
Drawn by: _____
Checked by: _____
Drawing Number: _____