

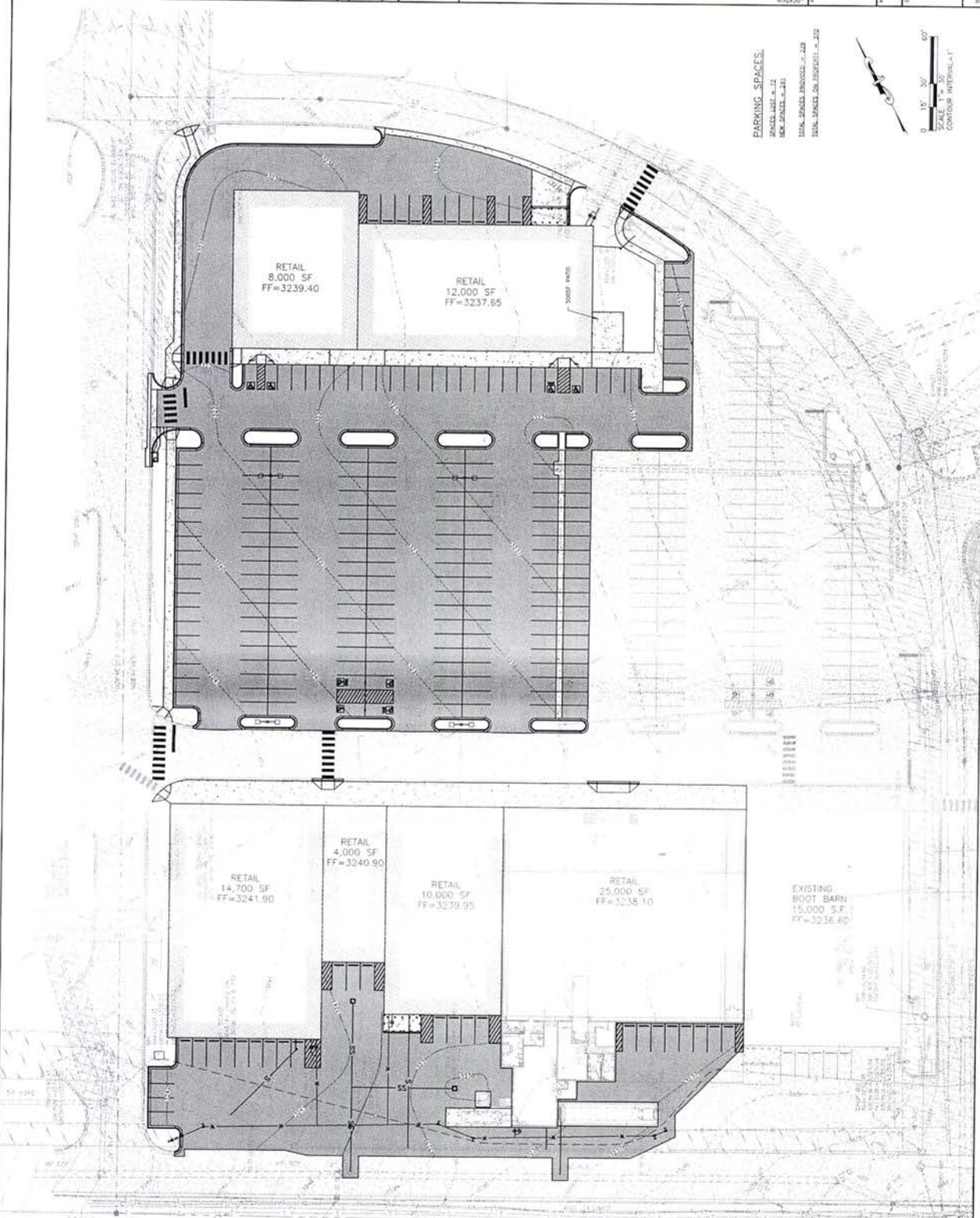
Project No.	15-002
Client	OPP HOLDINGS, LLC
Design Date	1/20/15
Drawn By	J. J. JENSEN
Checked By	J. J. JENSEN
Scale	AS SHOWN
Sheet No.	150115

AREA 300
 LOT 1, BLOCK 2, RUSHMORE CROSSING SUBDIVISION
 LOCATED IN SECTION 29 & 30, T2N, R9E, B1M
 RAPID CITY, PENNINGTON COUNTY, SOUTH DAKOTA

Prepared by:
 OPP HOLDINGS, LLC
 417 W. 14TH AVENUE
 SUITE 700, RICHMOND, SD
 57401
 ORIGINATOR: CH 4338

Sheet No. #2613.06
 Overall: SITE LAYOUT
 Scale: 1" = 30'
 Contour Interval: 1'

Sheet C-4



RECEIVED

FEB 27 2015