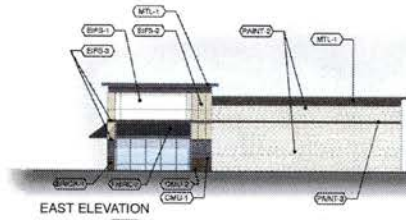
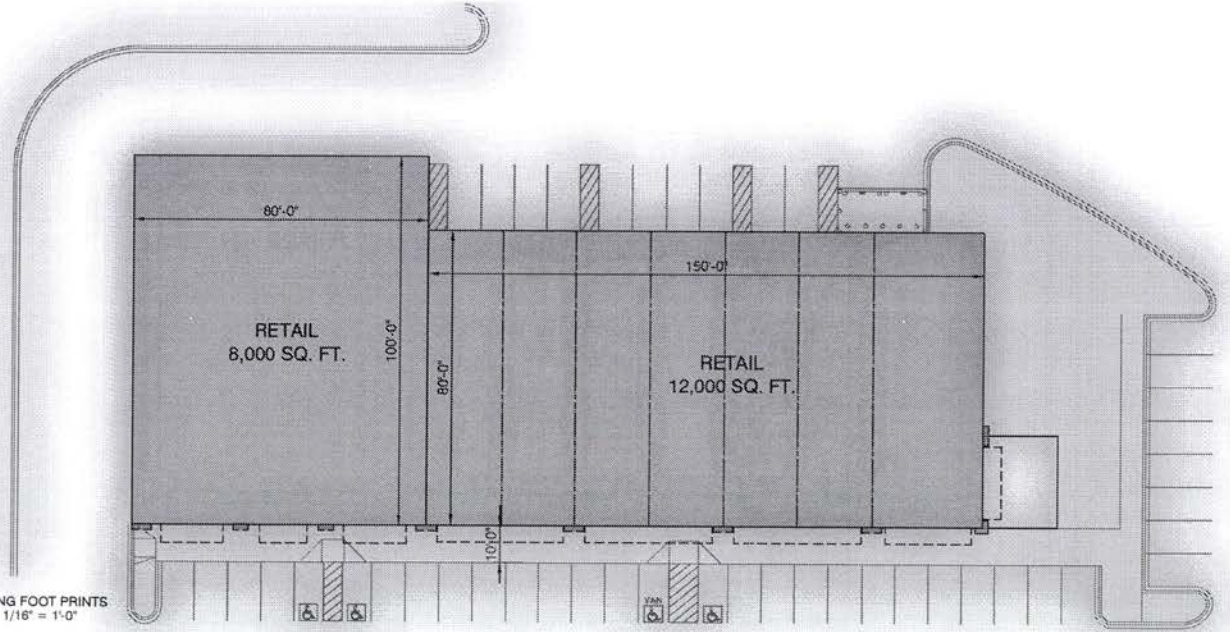


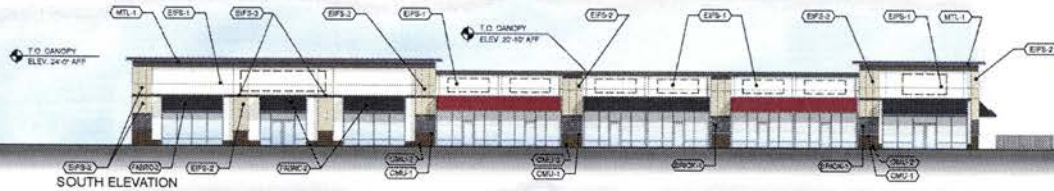
LEGEND			
EPS-1	DRYVT - 113 AMARILLO WHITE	BRCK-2	CLOUD CERAMIC - OLD ROSE
EPS-2	DRYVT - 206 COPPEL MILK	MTL-1	UNGLAD - MANSARD BROWN - METAL COPING
EPS-3	STD PRODUCTS - 20915 DARK STD	MTL-2	UNGLAD - COLOR TBD - CORRUGATED METAL PANEL
PAINT-1	TENANT IDENTITY BAND	CMU-1	INTERSTAR - 80-15-1 ROCK FACE
PAINT-2	PAINT CMU TO MATCH - 113 AMARILLO WHITE	CMU-2	INTERSTAR - 80-15-1 SMOOTH FACE
PAINT-3	PAINT CMU TO MATCH - 20915 DARK STD	FABR-1	SUNBRELLA - 480 'DOCKY RED'
BRCK-1	BRICKOTT - MANGANESE IRONSPOT	FABR-2	SUNBRELLA - 605 'ALPINE'



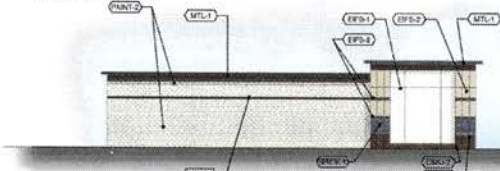
BUILDING FOOT PRINTS  
Scale: 1/16" = 1'-0"



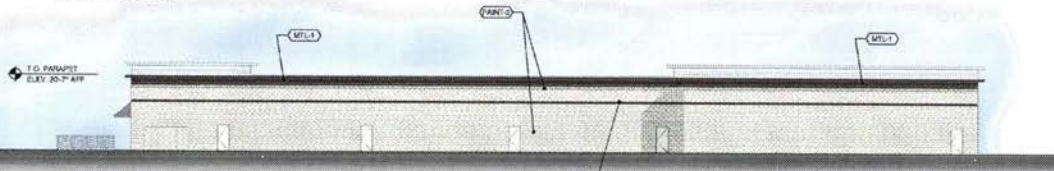
EAST ELEVATION



SOUTH ELEVATION



WEST ELEVATION  
Scale: 1/16" = 1'-0"



NORTH ELEVATION

DATE:	02/26/2015
MCG JOB #:	15.035.10
DATE	REVISIONS

ELEVATIONS AND FOOTPRINTS  
SMALL SHOPS

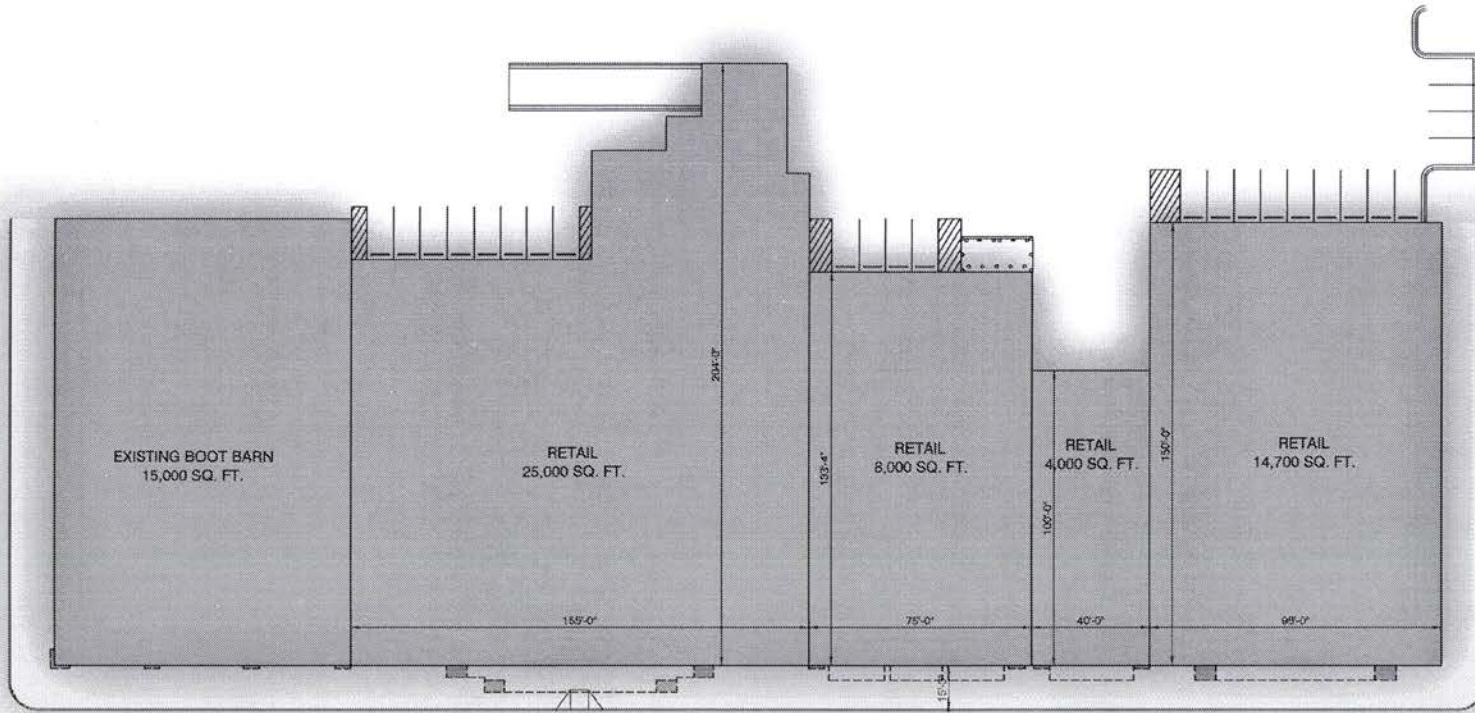
RUSHMORE CROSSING  
RAPID CITY, SD

Midland Atlantic Development Company LLC

7100 East Pleasant Valley Road, Suite 320  
Cleveland, Ohio 44131  
T 216.520.1551 F 216.520.1567  
mogarchitecture.com



© MCG ARCHITECTS 2015. ALL RIGHTS RESERVED.  
NOTICE: This information is conceptual in nature and is subject to adjustments pending further verification and Client, Tenant, and Government Agency approvals. No warranties or guarantees of any kind are given or implied by the Architect.



**LEGEND**

- SPS1 DRIVE - 113 AERIAL WHITE
- SPS2 DRIVE - 306 COPPER BLUE
- SPS3 METAL PANELS - 30615 GALV STEEL
- SPS4 TIBBATT CEMENTY BRICK
- SPS5 PAINT ORAU 75 MATCH - 113 AERIAL WHITE
- SPS6 PAINT ORAU 75 MATCH - 306 COPPER BLUE
- SPS7 ENDOCOR - 30615 GALV STEEL
- SPS8 GLEDDY CORNBOARD - 113 RISE
- SPS9 UNPAVED - 30615 GALV STEEL
- SPS10 UNPAVED - 30615 GALV STEEL
- SPS11 METAL PANELS
- SPS12 INTERIOR - 30615 GALV STEEL
- SPS13 INTERIOR - 30615 GALV STEEL
- SPS14 ALUMINUM - 30615 GALV STEEL
- SPS15 ALUMINUM - 30615 GALV STEEL

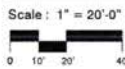


DATE: 02/26/2015  
 MCG JOB #: 15.035.10

DATE	REVISIONS

© MCG ARCHITECTS 2015. ALL RIGHTS RESERVED.  
 NOTE: This information is conceptual in nature and is subject to subsequent pending further site location and design, zoning, and Governmental Agency approvals. No warranties or guarantees of any kind are given or implied by the Architect.

**ELEVATION AND FOOTPRINT**



**RUSHMORE CROSSING**

**RAPID CITY, SD**

Midland Atlantic Development Company LLC

7100 East Pleasant Valley Road, Suite 320  
 Cleveland, Ohio 44131

T: 216.520.1551 F: 216.520.1567  
 mcgarchitecture.com

